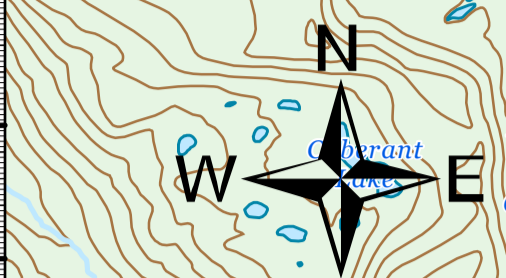
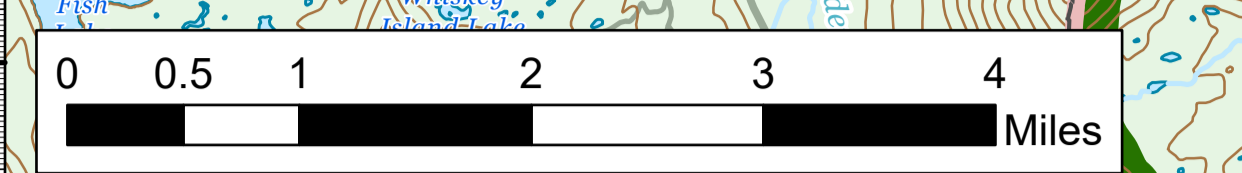
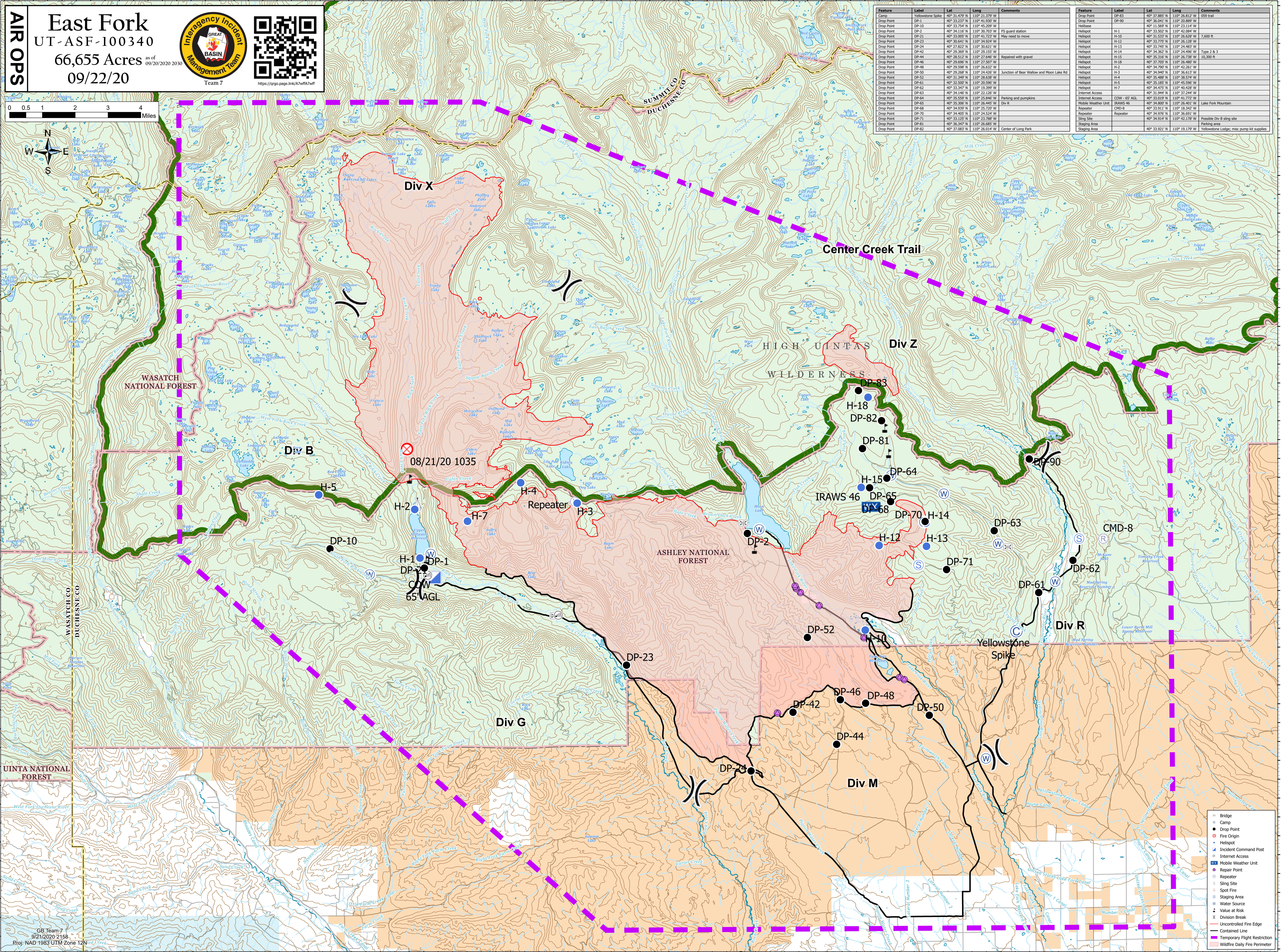


AIR OPS

East Fork
UT-ASF-100340
66,655 Acres as of 09/20/2020 2030
09/22/20



Feature	Label	Lat	Long	Comments
Yellowstone Spike	DP-1	40° 31.479' N	110° 21.379' W	
Drop Point	DP-1	40° 33.237' N	110° 41.930' W	
Drop Point	DP-10	40° 33.704' N	110° 42.209' W	
Drop Point	DP-2	40° 34.116' N	110° 30.703' W	FS guard station
Drop Point	DP-21	40° 33.005' N	110° 41.723' W	May need to move
Drop Point	DP-23	40° 33.041' N	110° 34.934' W	
Drop Point	DP-24	40° 27.822' N	110° 30.621' W	
Drop Point	DP-42	40° 29.369' N	110° 29.155' W	
Drop Point	DP-44	40° 28.512' N	110° 27.646' W	Repaired with gravel
Drop Point	DP-46	40° 29.696' N	110° 27.607' W	
Drop Point	DP-48	40° 29.588' N	110° 26.632' W	
Drop Point	DP-50	40° 29.268' N	110° 24.426' W	Junction of Bear Wallow and Moon Lake Rd
Drop Point	DP-52	40° 31.249' N	110° 38.838' W	
Drop Point	DP-61	40° 32.500' N	110° 20.596' W	
Drop Point	DP-62	40° 33.347' N	110° 19.399' W	
Drop Point	DP-63	40° 34.146' N	110° 22.126' W	
Drop Point	DP-64	40° 33.597' N	110° 26.846' W	
Drop Point	DP-65	40° 35.306' N	110° 26.445' W	Parking and pumpkins
Drop Point	DP-68	40° 34.939' N	110° 25.720' W	
Drop Point	DP-70	40° 34.605' N	110° 24.524' W	Repeater
Drop Point	DP-71	40° 33.125' N	110° 23.788' W	
Drop Point	DP-81	40° 36.347' N	110° 26.685' W	
Drop Point	DP-82	40° 37.083' N	110° 26.014' W	Center of Long Park
Drop Point	DP-83	40° 37.885' N	110° 26.812' W	059 trail
Drop Point	DP-90	40° 36.041' N	110° 30.889' W	
Helispot	H-1	40° 33.502' N	110° 42.088' W	
Helispot	H-10	40° 31.537' N	110° 26.628' W	7,600 ft
Helispot	H-12	40° 33.775' N	110° 35.189' W	
Helispot	H-13	40° 33.745' N	110° 34.483' W	
Helispot	H-14	40° 34.362' N	110° 24.496' W	Type 2 & 3
Helispot	H-15	40° 35.218' N	110° 26.728' W	10,300 ft
Helispot	H-18	40° 37.602' N	110° 35.402' W	
Helispot	H-2	40° 34.790' N	110° 42.261' W	
Helispot	H-3	40° 34.940' N	110° 36.613' W	
Helispot	H-4	40° 35.668' N	110° 35.534' W	
Helispot	H-5	40° 35.185' N	110° 45.596' W	
Helispot	H-7	40° 34.475' N	110° 40.478' W	
Internet Access	Internet Access	40° 31.944' N	110° 37.244' W	
Internet Access	Internet Access	40° 33.017' N	110° 41.777' W	
Mobile Weather Unit	IRAWS-46	40° 34.800' N	110° 26.400' W	Lake Fork Mountain
Repeater	CMD-8	40° 33.911' N	110° 18.342' W	
Repeater	Repeater	40° 34.976' N	110° 36.654' W	
Sling Site	Sling Site	40° 34.914' N	110° 42.176' W	Possible Div B sling site
Staging Area	Staging Area	40° 33.921' N	110° 19.179' W	Parking area
Staging Area	Staging Area	40° 33.921' N	110° 19.179' W	Yellowstone Lodge; misc pump kit supplies



CB Team 7
9/21/2020 2:158
Proj: NAD 1983 UTM Zone 12N

- Bridge
- Camp
- Drop Point
- Fire Point
- Fire Origin
- Incident Command Post
- Internet Access
- Mobile Weather Unit
- Repair Point
- Repeater
- Sling Site
- Spot Fire
- Staging Area
- Water Source
- Value at Risk
- Division Break
- Uncontrolled Fire Edge
- Contained Line
- Temporary Flight Restriction
- Wildfire Daily Fire Perimeter