



AIR OPS

East Fork

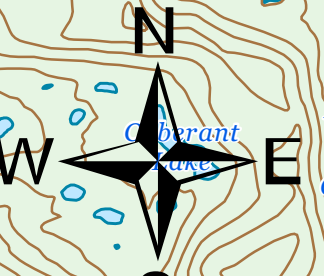
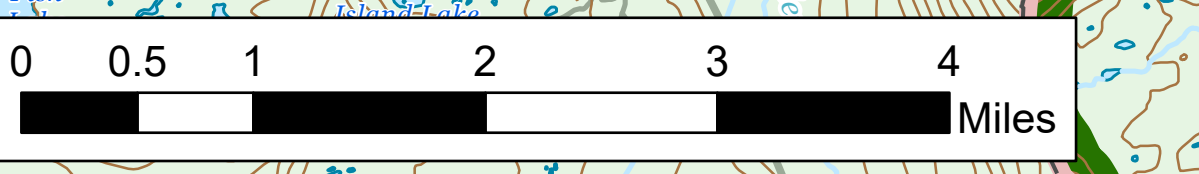
UT-ASF-100340

66,655 Acres as of 09/20/2020 2030

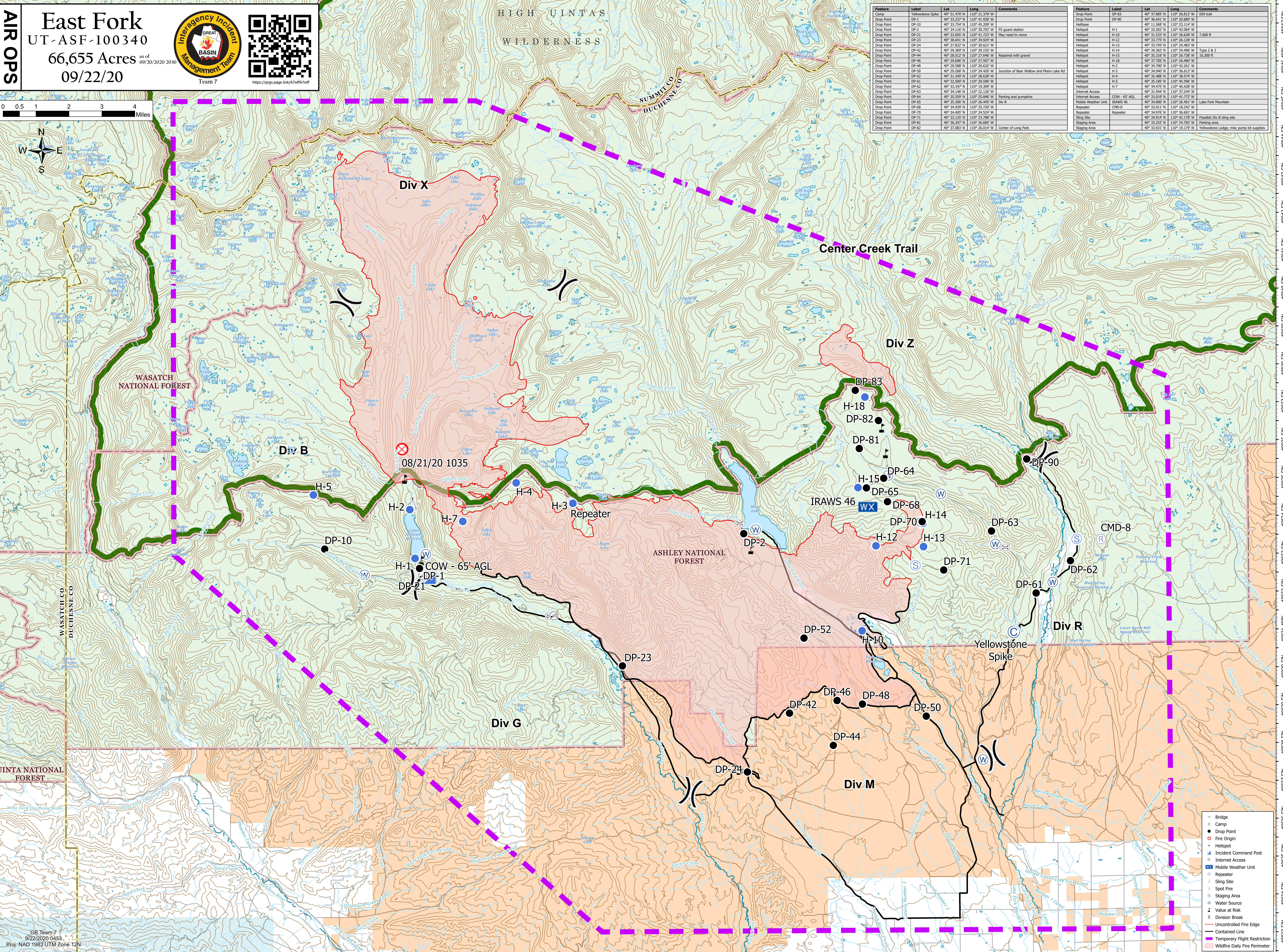
09/22/20

Team 7
<https://argo.page.link/A7WfIA7wtf>



Feature	Label	Lat	Long	Comments
Drop Point	DP-1	40° 33.237' N	110° 41.930' W	
Drop Point	DP-10	40° 33.754' N	110° 45.209' W	
Drop Point	DP-2	40° 34.116' N	110° 30.703' W	PS guard station
Drop Point	DP-21	40° 33.005' N	110° 41.723' W	May need to move
Drop Point	DP-23	40° 30.641' N	110° 34.924' W	
Drop Point	DP-24	40° 27.822' N	110° 30.621' W	
Drop Point	DP-42	40° 29.369' N	110° 29.153' W	
Drop Point	DP-44	40° 28.512' N	110° 27.646' W	Repaired with gravel
Drop Point	DP-46	40° 29.696' N	110° 27.507' W	
Drop Point	DP-49	40° 29.096' N	110° 26.522' W	
Drop Point	DP-50	40° 29.268' N	110° 24.262' W	Junction of Bear Willow and Moon Lake Rd
Drop Point	DP-52	40° 31.349' N	110° 28.838' W	
Drop Point	DP-61	40° 32.500' N	110° 20.596' W	
Drop Point	DP-62	40° 33.347' N	110° 19.399' W	
Drop Point	DP-63	40° 34.146' N	110° 22.126' W	
Drop Point	DP-64	40° 35.559' N	110° 25.846' W	Parking and pumps
Drop Point	DP-65	40° 35.369' N	110° 26.153' W	
Drop Point	DP-68	40° 34.939' N	110° 25.720' W	Div #
Drop Point	DP-70	40° 34.405' N	110° 24.524' W	
Drop Point	DP-71	40° 33.123' N	110° 23.766' W	
Drop Point	DP-81	40° 36.347' N	110° 26.685' W	
Drop Point	DP-82	40° 37.083' N	110° 26.014' W	Center of Long Park
Drop Point	DP-83	40° 37.885' N	110° 26.812' W	OSB tent
Drop Point	DP-90	40° 36.041' N	110° 20.889' W	
Helibase	H-1	40° 33.627' N	110° 42.086' W	
Helispot	H-10	40° 31.533' N	110° 26.628' W	7,600 ft
Helispot	H-12	40° 33.775' N	110° 26.128' W	
Helispot	H-13	40° 33.745' N	110° 24.483' W	
Helispot	H-14	40° 33.161' N	110° 24.498' W	Type 2 B 3
Helispot	H-15	40° 35.165' N	110° 26.738' W	10,300 ft
Helispot	H-18	40° 37.705' N	110° 26.480' W	
Helispot	H-2	40° 34.790' N	110° 42.261' W	
Helispot	H-3	40° 34.940' N	110° 36.613' W	
Helispot	H-4	40° 35.488' N	110° 38.574' W	
Helispot	H-5	40° 35.485' N	110° 45.596' W	
Helispot	H-7	40° 34.672' N	110° 40.454' W	
Internet Access	Internet Access	40° 31.944' N	110° 37.244' W	
Internet Access	COW - 65' AGL	40° 33.039' N	110° 41.772' W	
Mobile Weather Unit	IRAWS 46	40° 34.802' N	110° 26.401' W	Lake Park Mountain
Repeater	CHD-8	40° 31.944' N	110° 37.244' W	
Repeater	CHD-4	40° 34.976' N	110° 28.342' W	
Repeater	CHD-3	40° 34.976' N	110° 26.697' W	
Sling Site	Sling Site	40° 34.976' N	110° 42.139' W	Possible Div B sling site
Staging Area	Staging Area	40° 33.252' N	110° 24.765' W	Parking area
Staging Area	Staging Area	40° 33.921' N	110° 19.179' W	Yellowstone Lodge; misc pump kit supplies



GB Team 7
 9/22/2020 0453
 Proj: NAD 1983 UTM Zone 12N

- Bridge
- Camp
- Drop Point
- Fire Origin
- Helispot
- Incident Command Post
- Internet Access
- Repeater
- Sling Site
- Spot Fire
- Staging Area
- Water Source
- Value at Risk
- Division Break
- Uncontrolled Fire Edge
- Contained Line
- Temporary Flight Restriction
- Wildfire Daily Fire Perimeter