

110°59'W 110°56'W 110°53'W 110°50'W 110°47'W 110°44'W 110°41'W 110°38'W 110°35'W 110°32'W 110°29'W 110°26'W 110°23'W 110°20'W 110°17'W 110°14'W


PUBLIC INFORMATION

East Fork


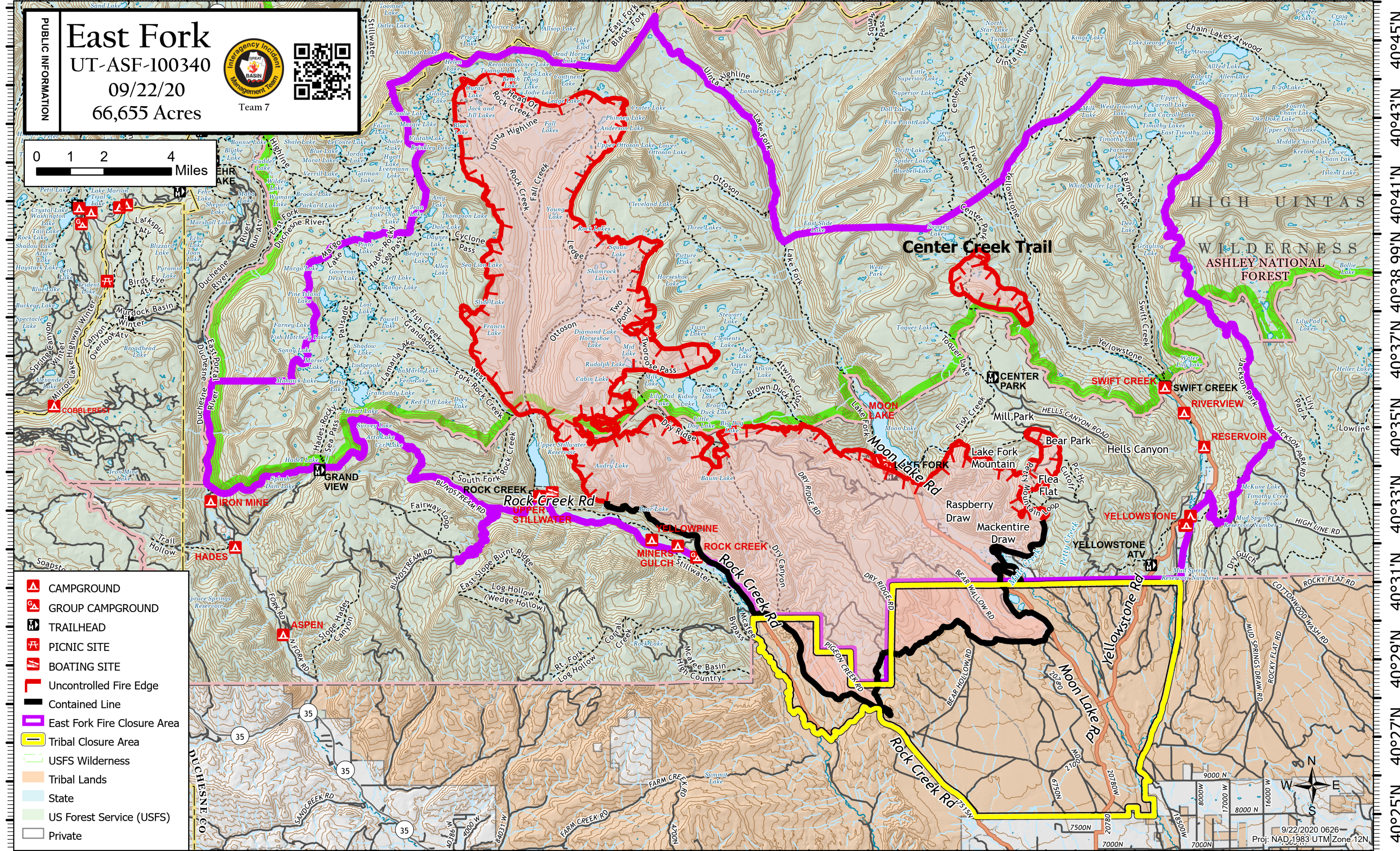
UT-ASF-100340

09/22/20

66,655 Acres



Team 7

-  CAMPGROUND
-  GROUP CAMPGROUND
-  TRAILHEAD
-  PICNIC SITE
-  BOATING SITE
-  Uncontrolled Fire Edge
-  Contained Line
-  East Fork Fire Closure Area
-  Tribal Closure Area
-  USFS Wilderness
-  Tribal Lands
-  State
-  US Forest Service (USFS)
-  Private

9/22/2020 0626
 Proj: NAD_1983 UTM Zone 12N

110°59'W 110°56'W 110°53'W 110°50'W 110°47'W 110°44'W 110°41'W 110°38'W 110°35'W 110°32'W 110°29'W 110°26'W 110°23'W 110°20'W 110°17'W 110°14'W

40°25'N 40°27'N 40°29'N 40°31'N 40°33'N 40°35'N 40°37'N 40°38.99'N 40°41'N 40°43'N 40°45'N

40°25'N 40°27'N 40°29'N 40°31'N 40°33'N 40°35'N 40°37'N 40°38.99'N 40°41'N 40°43'N 40°45'N