

PLANNING

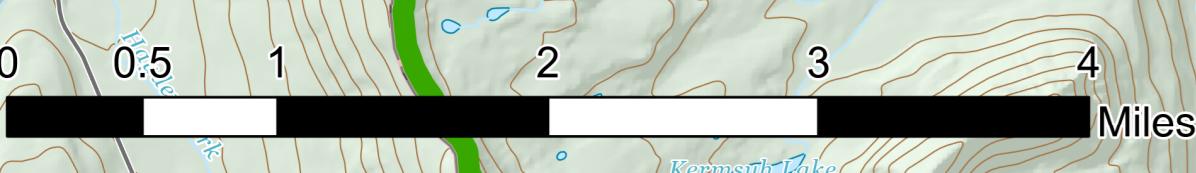
East Fork
UT-ASF-100340

66,655 Acres as of 09/20/2020
09/22/20

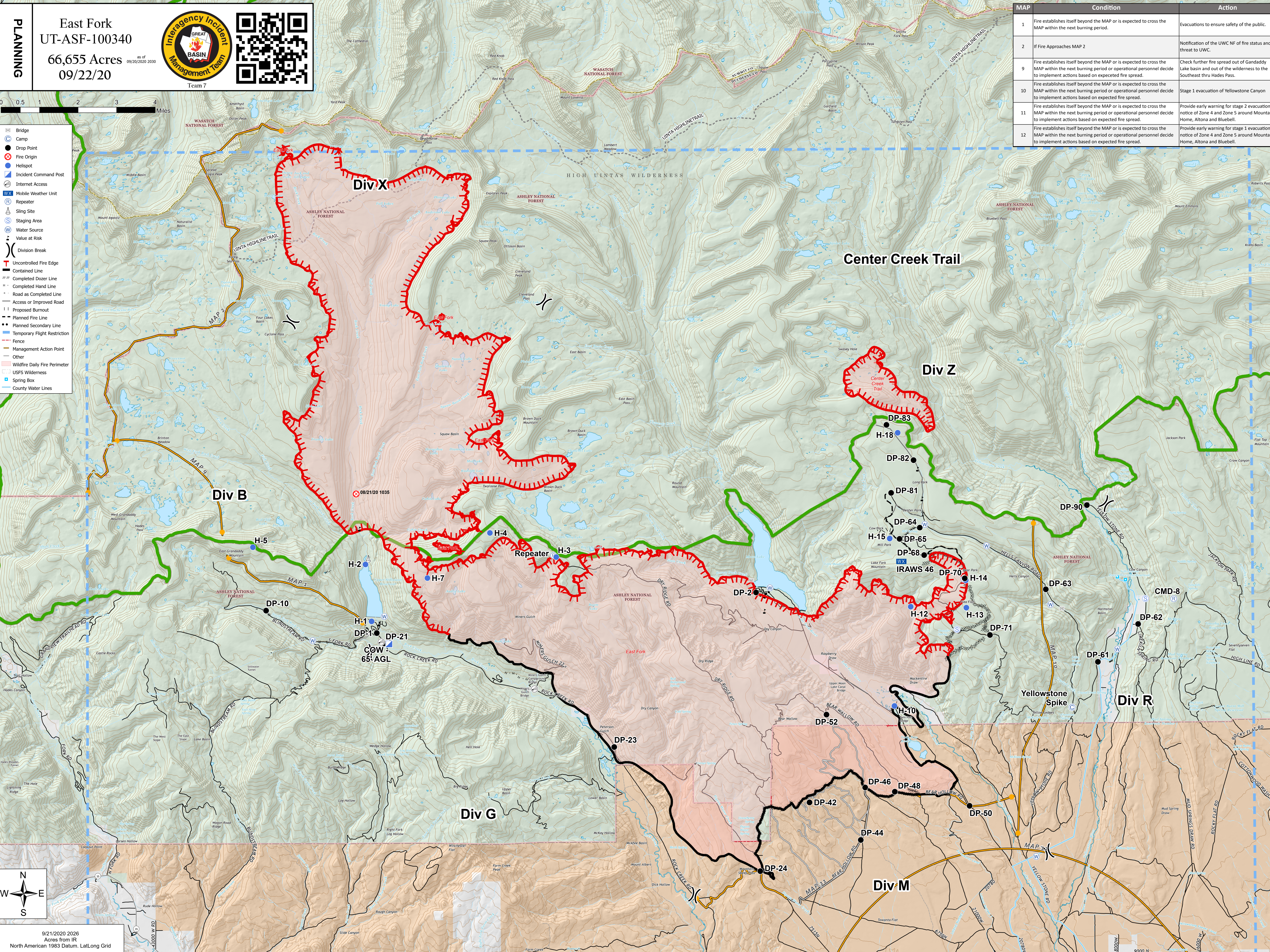



Team 7

| MAP | Condition | Action |
|-----|---|---|
| 1 | Fire establishes itself beyond the MAP or is expected to cross the MAP within the next burning period. | Evacuations to ensure safety of the public. |
| 2 | If Fire Approaches MAP 2 | Notification of the UWC NF of fire status and threat to UWC. |
| 9 | Fire establishes itself beyond the MAP or is expected to cross the MAP within the next burning period or operational personnel decide to implement actions based on expected fire spread. | Check further fire spread out of Gandaddy Lake basin and out of the wilderness to the Southeast thru Hades Pass. |
| 10 | Fire establishes itself beyond the MAP or is expected to cross the MAP within the next burning period or operational personnel decide to implement actions based on expected fire spread. | Stage 1 evacuation of Yellowstone Canyon |
| 11 | Fire establishes itself beyond the MAP or is expected to cross the MAP within the next burning period or operational personnel decide to implement actions based on expected fire spread. | Provide early warning for stage 2 evacuation notice of Zone 4 and Zone 5 around Mountain Home, Altona and Bluebell. |
| 12 | Fire establishes itself beyond the MAP or is expected to cross the MAP within the next burning period or operational personnel decide to implement actions based on expected fire spread. | Provide early warning for stage 1 evacuation notice of Zone 4 and Zone 5 around Mountain Home, Altona and Bluebell. |



- Bridge
- Camp
- Drop Point
- Fire Origin
- Helispot
- Incident Command Post
- Internet Access
- Mobile Weather Unit
- Repeater
- Sling Site
- Staging Area
- Water Source
- Value at Risk
- Division Break
- Uncontrolled Fire Edge
- Contained Line
- Completed Dozer Line
- Completed Hand Line
- Road as Completed Line
- Access or Improved Road
- Proposed Burnout
- Planned Fire Line
- Planned Secondary Line
- Temporary Flight Restriction
- Fence
- Management Action Point
- Other
- Wildfire Daily Fire Perimeter
- USFS Wilderness
- Spring Box
- County Water Lines



9/21/2020 2026
Acres from IR
North American 1983 Datum, LatLong Grid