

AIR OPS

East Fork

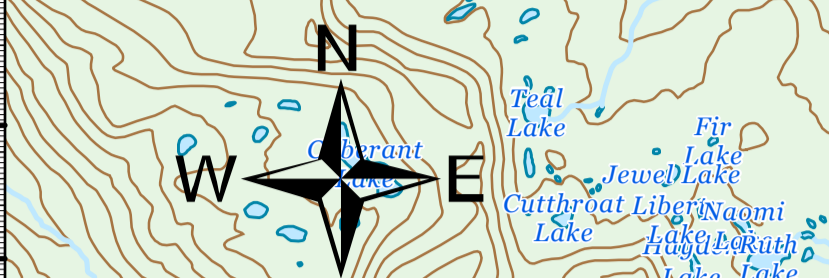
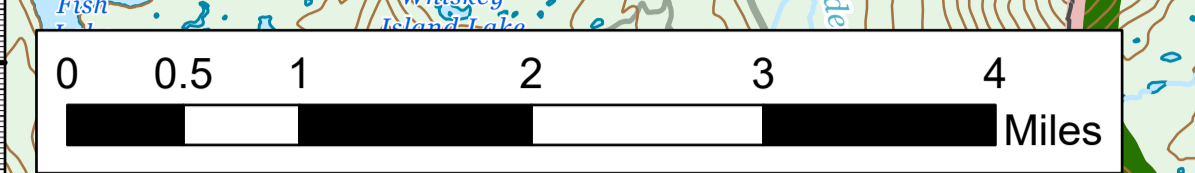
UT-ASF-100340

66,655 Acres as of 09/20/2020 2030

09/23/20

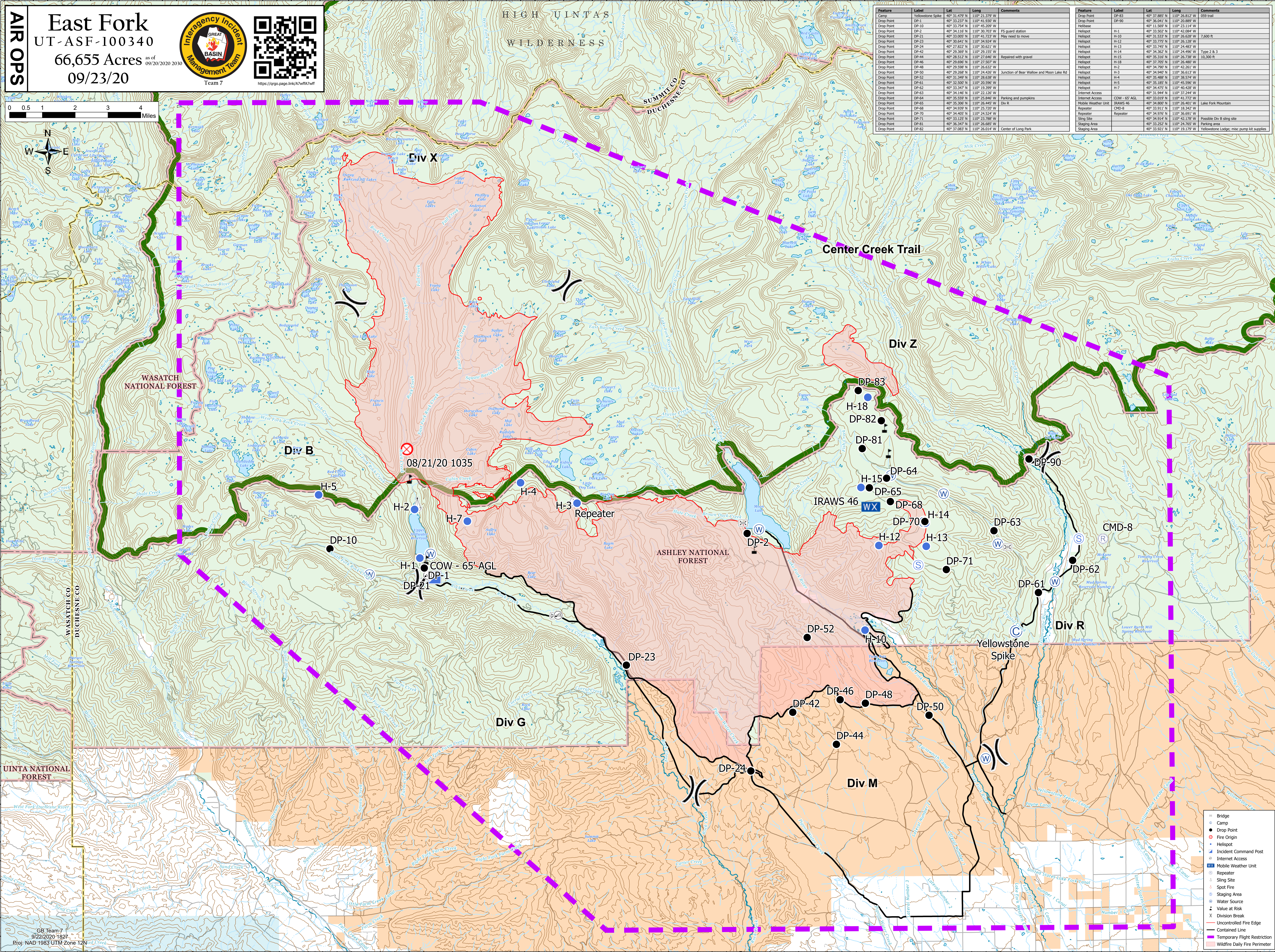



Team 7
<https://argo.page.link/U7Mf1a7>



Feature	Label	Lat	Long	Comments
Yellowstone Spike	DP-1	40° 31.479' N	110° 21.379' W	
Drop Point	DP-1	40° 33.237' N	110° 41.930' W	
Drop Point	DP-10	40° 33.704' N	110° 45.209' W	
Drop Point	DP-2	40° 34.116' N	110° 30.703' W	FS guard station
Drop Point	DP-21	40° 33.005' N	110° 41.723' W	May need to move
Drop Point	DP-23	40° 33.041' N	110° 34.524' W	
Drop Point	DP-24	40° 27.822' N	110° 30.621' W	
Drop Point	DP-42	40° 29.369' N	110° 29.155' W	
Drop Point	DP-44	40° 28.512' N	110° 27.648' W	Repaired with gravel
Drop Point	DP-46	40° 29.698' N	110° 27.607' W	
Drop Point	DP-48	40° 29.588' N	110° 26.632' W	
Drop Point	DP-50	40° 29.268' N	110° 24.428' W	Junction of Bear Wallow and Moon Lake Rd
Drop Point	DP-52	40° 31.549' N	110° 38.828' W	
Drop Point	DP-61	40° 32.500' N	110° 20.596' W	
Drop Point	DP-62	40° 33.347' N	110° 19.399' W	
Drop Point	DP-63	40° 34.146' N	110° 22.128' W	
Drop Point	DP-64	40° 33.597' N	110° 26.846' W	
Drop Point	DP-65	40° 35.306' N	110° 26.445' W	Parking and pumpkins
Drop Point	DP-68	40° 34.939' N	110° 25.720' W	
Drop Point	DP-70	40° 34.685' N	110° 24.524' W	Repeater
Drop Point	DP-71	40° 33.125' N	110° 23.788' W	
Drop Point	DP-81	40° 36.347' N	110° 26.685' W	
Drop Point	DP-82	40° 37.083' N	110° 26.014' W	Center of Long Park

Feature	Label	Lat	Long	Comments
Drop Point	DP-83	40° 37.885' N	110° 26.812' W	059 trail
Drop Point	DP-90	40° 36.041' N	110° 30.889' W	
Helispot	H-1	40° 33.502' N	110° 42.008' W	
Helispot	H-10	40° 31.537' N	110° 26.628' W	7,600 ft
Helispot	H-12	40° 33.775' N	110° 35.187' W	
Helispot	H-13	40° 33.745' N	110° 24.483' W	
Helispot	H-14	40° 34.362' N	110° 24.496' W	Type 2 & 3
Helispot	H-15	40° 35.218' N	110° 26.748' W	10,300 ft
Helispot	H-18	40° 37.602' N	110° 35.807' W	
Helispot	H-2	40° 34.790' N	110° 42.861' W	
Helispot	H-3	40° 34.940' N	110° 36.613' W	
Helispot	H-4	40° 35.608' N	110° 35.574' W	
Helispot	H-5	40° 35.185' N	110° 45.596' W	
Helispot	H-7	40° 34.475' N	110° 40.478' W	
Internet Access	Internet Access	40° 31.944' N	110° 37.244' W	
Internet Access	Internet Access	40° 33.017' N	110° 41.772' W	
Mobile Weather Unit	IRAWS-46	40° 34.800' N	110° 26.400' W	Lake Fork Mountain
Repeater	CMD-8	40° 33.911' N	110° 18.342' W	
Repeater	Repeater	40° 34.790' N	110° 36.604' W	
Sling Site	Sling Site	40° 34.914' N	110° 42.725' W	Possible Div B sling site
Staging Area	Staging Area	40° 33.252' N	110° 24.765' W	Parking area
Staging Area	Staging Area	40° 33.921' N	110° 19.179' W	Yellowstone Lodge; misc pump kit supplies



CB Team 7
 9/22/2020 1827
 Proj: NAD 1983 UTM Zone 12N

Bridge	Symbol
Camp	Symbol
Drop Point	Symbol
Fire Origin	Symbol
Helispot	Symbol
Incident Command Post	Symbol
Internet Access	Symbol
Mobile Weather Unit	Symbol
Repeater	Symbol
Sling Site	Symbol
Spot Fire	Symbol
Staging Area	Symbol
Water Source	Symbol
Value at Risk	Symbol
Division Break	Symbol
Uncontrolled Fire Edge	Symbol
Contained Line	Symbol
Temporary Flight Restriction	Symbol
Wildfire Daily Fire Perimeter	Symbol