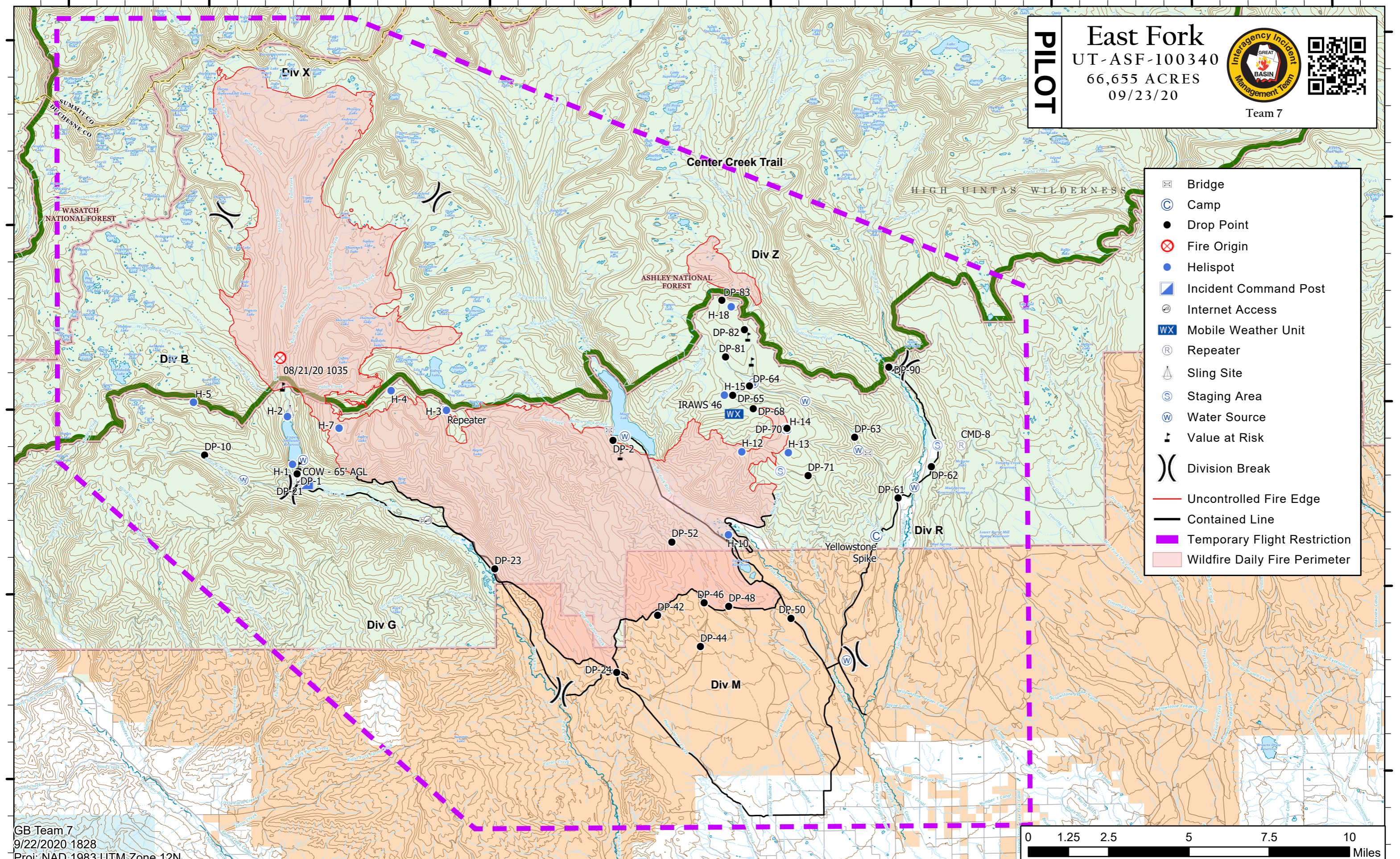


110°50'W 110°45'W 110°40'W 110°35'W 110°30'W 110°25'W 110°20'W 110°15'W 110°10'W 110°5'W



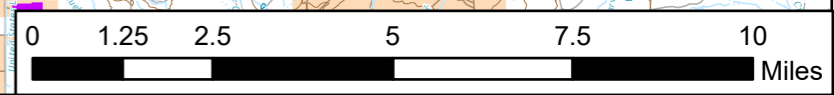
PILOT

East Fork
 UT-ASF-100340
 66,655 ACRES
 09/23/20

Team 7

- Bridge
- Camp
- Drop Point
- Fire Origin
- Helispot
- Incident Command Post
- Internet Access
- Mobile Weather Unit
- Repeater
- Sling Site
- Staging Area
- Water Source
- Value at Risk
- Division Break
- Uncontrolled Fire Edge
- Contained Line
- Temporary Flight Restriction
- Wildfire Daily Fire Perimeter

GB Team 7
 9/22/2020 1828
 Proj: NAD_1983 UTM Zone 12N



110°50'W 110°45'W 110°40'W 110°35'W 110°30'W 110°25'W 110°20'W 110°15'W 110°10'W 110°5'W

40°45'N
40°40'N
40°35'N
40°30'N
40°25'N

40°45'N
40°40'N
40°35'N
40°30'N
40°25'N