

# AIR OPS

## East Fork

### UT-ASF-100340

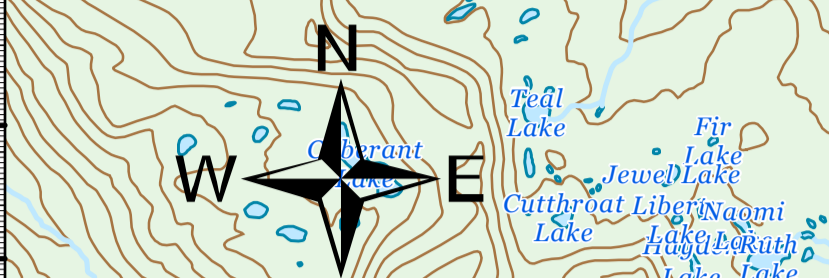
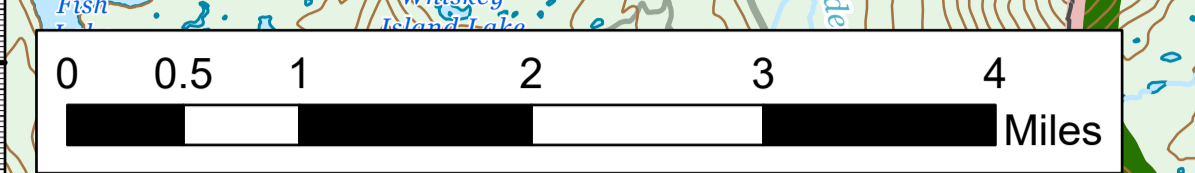
67,006 Acres as of 09/22/2020 2215

09/24/20




Team 7

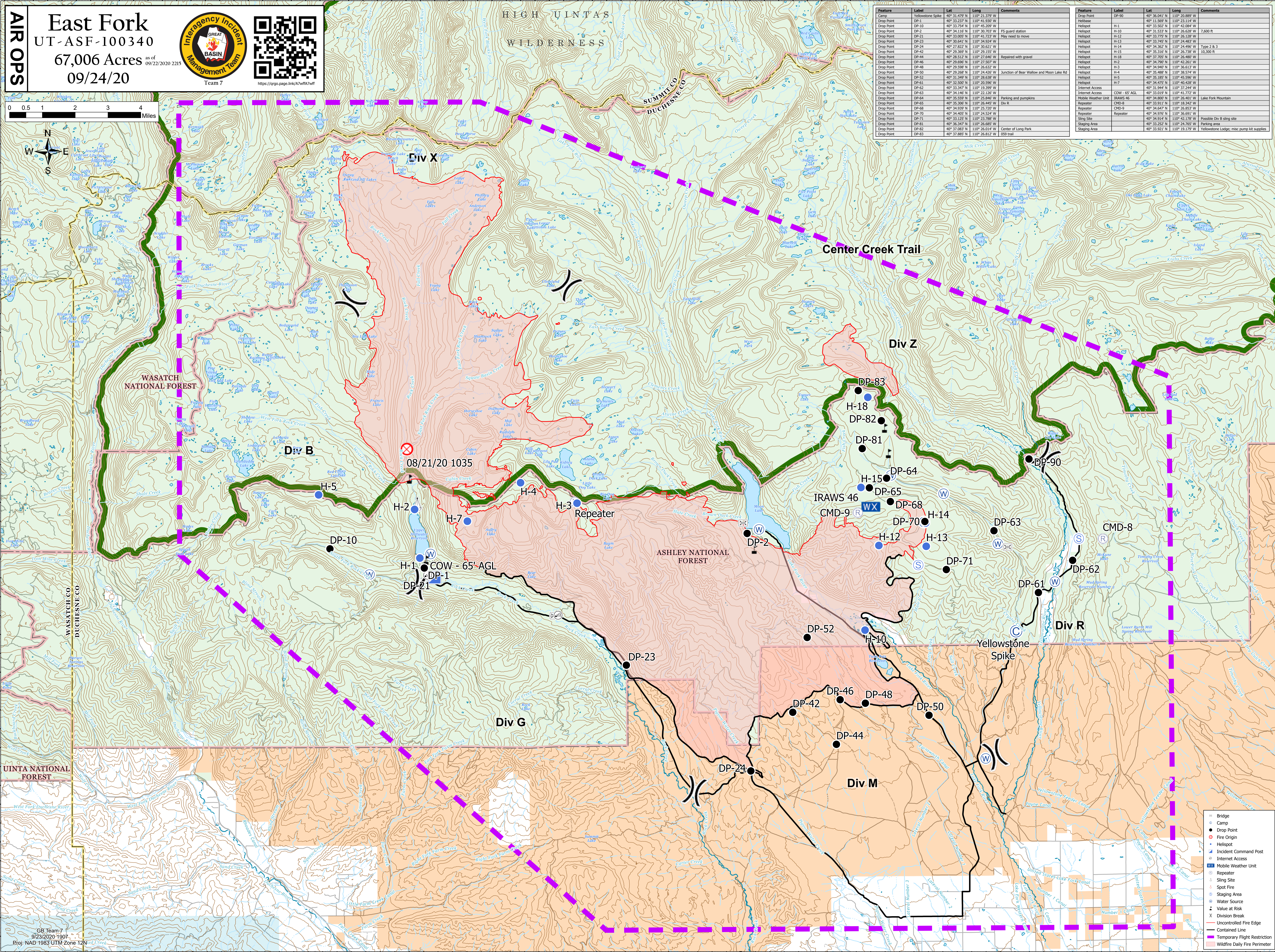
<https://argo.page.link/U7Wf1a7>



Feature	Label	Lat	Long	Comments
Yellowstone Spike	DP-90	40° 36.041' N	110° 20.889' W	
Drop Point	DP-1	40° 33.237' N	110° 41.930' W	
Drop Point	DP-10	40° 33.704' N	110° 45.209' W	
Drop Point	DP-2	40° 34.116' N	110° 30.703' W	FS guard station
Drop Point	DP-21	40° 33.060' N	110° 41.723' W	May need to move
Drop Point	DP-23	40° 33.041' N	110° 34.524' W	
Drop Point	DP-24	40° 27.822' N	110° 30.621' W	
Drop Point	DP-42	40° 29.369' N	110° 29.155' W	
Drop Point	DP-44	40° 28.512' N	110° 27.648' W	Repaired with gravel
Drop Point	DP-46	40° 29.698' N	110° 27.607' W	
Drop Point	DP-48	40° 29.588' N	110° 26.632' W	
Drop Point	DP-50	40° 29.268' N	110° 24.428' W	Junction of Bear Wallow and Moon Lake Rd
Drop Point	DP-52	40° 31.489' N	110° 38.528' W	
Drop Point	DP-61	40° 32.500' N	110° 20.596' W	
Drop Point	DP-62	40° 33.347' N	110° 19.399' W	
Drop Point	DP-63	40° 34.146' N	110° 22.128' W	
Drop Point	DP-64	40° 33.597' N	110° 26.846' W	
Drop Point	DP-65	40° 35.306' N	110° 26.445' W	Parking and pumpkins
Drop Point	DP-68	40° 34.939' N	110° 25.720' W	
Drop Point	DP-70	40° 34.605' N	110° 24.524' W	
Drop Point	DP-71	40° 33.125' N	110° 23.788' W	
Drop Point	DP-81	40° 36.347' N	110° 26.685' W	
Drop Point	DP-82	40° 37.083' N	110° 26.514' W	Center of Long Park
Drop Point	DP-83	40° 37.488' N	110° 26.812' W	059 trail

Feature	Label	Lat	Long	Comments
Helispot	H-1	40° 11.569' N	110° 23.114' W	
Helispot	H-10	40° 31.533' N	110° 36.256' W	7,600 ft
Helispot	H-12	40° 33.775' N	110° 26.788' W	
Helispot	H-13	40° 33.745' N	110° 34.827' W	
Helispot	H-14	40° 34.362' N	110° 24.496' W	Type 2 & 3
Helispot	H-15	40° 35.316' N	110° 26.738' W	10,300 ft
Helispot	H-18	40° 37.205' N	110° 26.480' W	
Helispot	H-2	40° 34.807' N	110° 42.851' W	
Helispot	H-3	40° 34.940' N	110° 36.613' W	
Helispot	H-4	40° 35.488' N	110° 38.574' W	
Helispot	H-5	40° 35.187' N	110° 45.586' W	
Helispot	H-7	40° 34.475' N	110° 40.428' W	
Internet Access		40° 31.944' N	110° 37.244' W	
Internet Access	COW - 65' AGL	40° 33.019' N	110° 41.772' W	
Mobile Weather Unit	IRAWS 46	40° 34.807' N	110° 26.846' W	Lake Fork Mountain
Repeater	CMD-8	40° 33.911' N	110° 18.842' W	
Repeater	CMD-9	40° 34.647' N	110° 26.853' W	
Repeater		40° 34.792' N	110° 36.681' W	
Sling Site		40° 34.914' N	110° 24.725' W	Possible Div B sling site
Staging Area		40° 33.252' N	110° 24.765' W	Parking area
Staging Area		40° 33.921' N	110° 19.179' W	Yellowstone Lodge; misc pump kit supplies



CB Team 7  
9/23/2020 1907  
Proj: NAD 1983 UTM Zone 12N