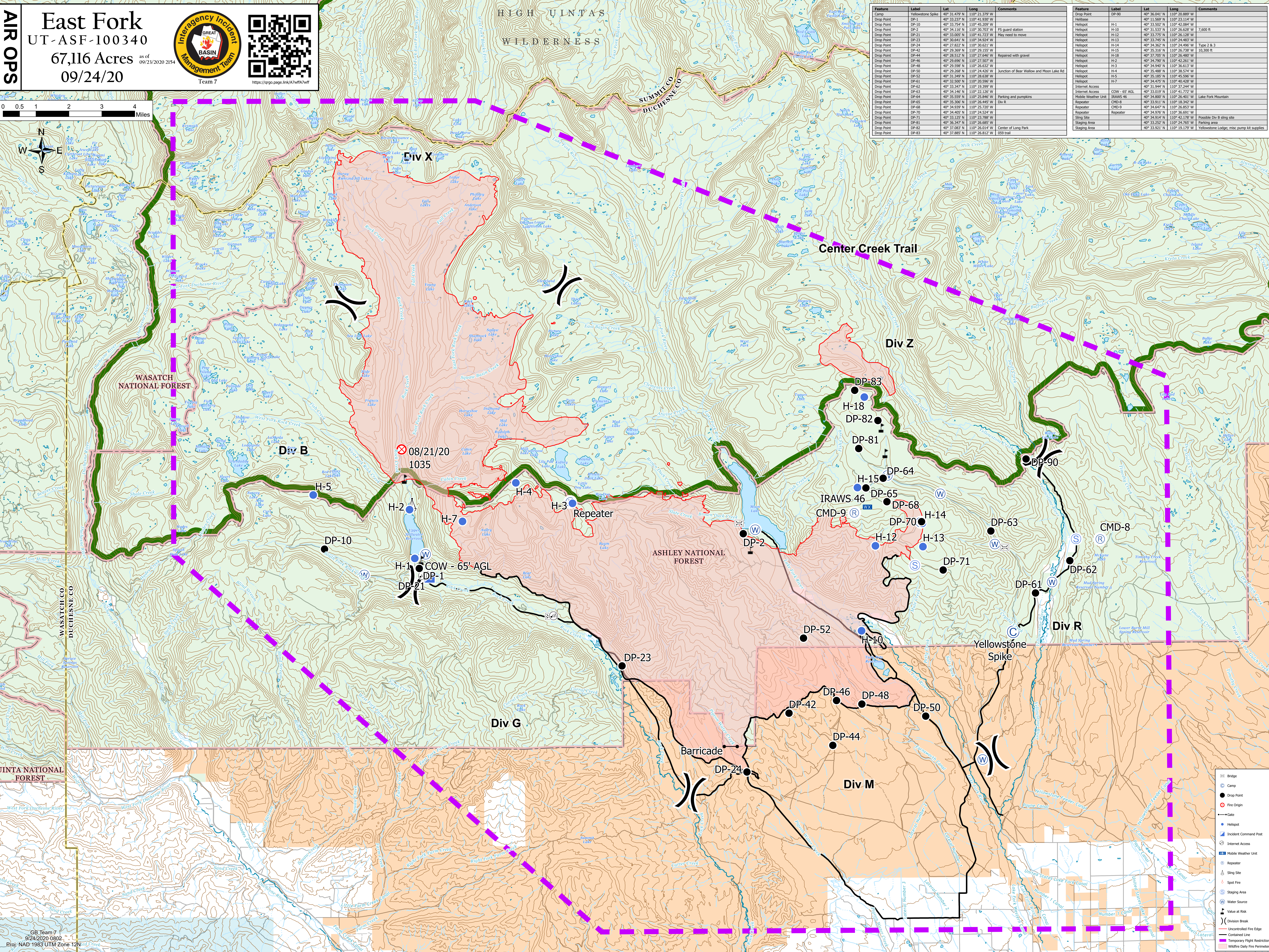
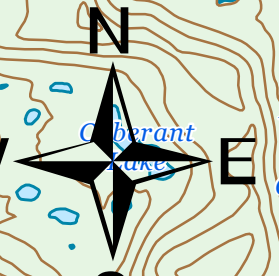
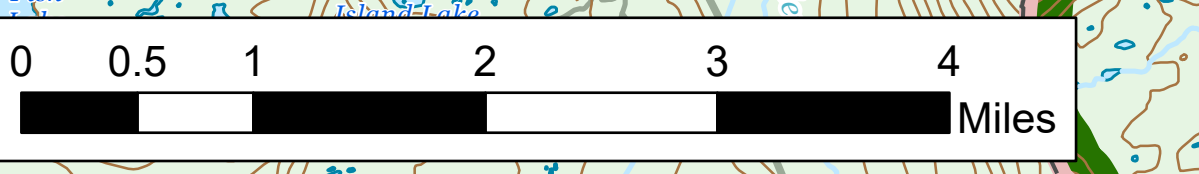


AIR OPS

East Fork
UT-ASF-100340
67,116 Acres as of
09/23/2020 2154
09/24/20



https://argo.page.link/A7WfIA7wtf



| Feature | Label | Lat | Long | Comments |
|---------------------|-----------------|---------------|----------------|---|
| Drop Point | DP-1 | 40° 33.237' N | 110° 41.930' W | |
| Drop Point | DP-10 | 40° 33.754' N | 110° 45.209' W | |
| Drop Point | DP-21 | 40° 34.116' N | 110° 30.703' W | FS guard station |
| Drop Point | DP-21 | 40° 33.005' N | 110° 41.723' W | May need to move |
| Drop Point | DP-23 | 40° 30.641' N | 110° 34.924' W | |
| Drop Point | DP-24 | 40° 27.822' N | 110° 30.621' W | |
| Drop Point | DP-42 | 40° 29.369' N | 110° 26.152' W | |
| Drop Point | DP-44 | 40° 28.512' N | 110° 27.646' W | Repaired with gravel |
| Drop Point | DP-46 | 40° 29.696' N | 110° 27.507' W | |
| Drop Point | DP-49 | 40° 29.096' N | 110° 26.522' W | |
| Drop Point | DP-50 | 40° 29.268' N | 110° 24.262' W | Junction of Bear Willow and Moon Lake Rd |
| Drop Point | DP-52 | 40° 31.349' N | 110° 28.838' W | |
| Drop Point | DP-61 | 40° 32.500' N | 110° 20.596' W | |
| Drop Point | DP-62 | 40° 33.347' N | 110° 19.599' W | |
| Drop Point | DP-63 | 40° 34.146' N | 110° 22.126' W | |
| Drop Point | DP-64 | 40° 35.559' N | 110° 25.846' W | Parking and pumps |
| Drop Point | DP-65 | 40° 35.369' N | 110° 26.152' W | |
| Drop Point | DP-68 | 40° 34.939' N | 110° 25.720' W | Div # |
| Drop Point | DP-70 | 40° 34.405' N | 110° 24.524' W | |
| Drop Point | DP-71 | 40° 33.123' N | 110° 23.768' W | |
| Drop Point | DP-81 | 40° 36.347' N | 110° 26.685' W | |
| Drop Point | DP-82 | 40° 37.083' N | 110° 26.014' W | Center of Long Park |
| Drop Point | DP-83 | 40° 37.885' N | 110° 26.812' W | 059 trail |
| Drop Point | DP-89 | 40° 36.041' N | 110° 20.889' W | |
| Helispot | H-1 | 40° 33.502' N | 110° 42.086' W | |
| Helispot | H-10 | 40° 31.527' N | 110° 36.628' W | 7,600 ft |
| Helispot | H-12 | 40° 33.775' N | 110° 26.128' W | |
| Helispot | H-13 | 40° 33.745' N | 110° 24.483' W | |
| Helispot | H-14 | 40° 34.362' N | 110° 24.495' W | Type 2 & 3 |
| Helispot | H-15 | 40° 33.319' N | 110° 26.728' W | 19,300 ft |
| Helispot | H-18 | 40° 37.095' N | 110° 26.480' W | |
| Helispot | H-2 | 40° 34.790' N | 110° 42.263' W | |
| Helispot | H-3 | 40° 34.500' N | 110° 36.612' W | |
| Helispot | H-4 | 40° 35.488' N | 110° 38.574' W | |
| Helispot | H-5 | 40° 35.185' N | 110° 45.596' W | |
| Helispot | H-7 | 40° 34.475' N | 110° 40.428' W | |
| Internet Access | Internet Access | 40° 31.944' N | 110° 37.248' W | |
| Internet Access | Internet Access | 40° 33.019' N | 110° 41.772' W | |
| Mobile Weather Unit | IRAWS 46 | 40° 34.800' N | 110° 26.403' W | Lake Fork Mountain |
| Repeater | CMD-8 | 40° 33.911' N | 110° 19.342' W | |
| Repeater | CMD-9 | 40° 34.647' N | 110° 26.853' W | |
| Repeater | Repeater | 40° 34.976' N | 110° 36.693' W | |
| Sling Site | Sling Site | 40° 34.500' N | 110° 42.139' W | Possible Div B sling site |
| Staging Area | Staging Area | 40° 33.252' N | 110° 24.765' W | Parking area |
| Staging Area | Staging Area | 40° 33.921' N | 110° 19.179' W | Yellowstone Lodge; misc pump kit supplies |

| | |
|--|-------------------------------|
| | Bridge |
| | Camp |
| | Drop Point |
| | Fire Origin |
| | Helispot |
| | Incident Command Post |
| | Internet Access |
| | Mobile Weather Unit |
| | Repeater |
| | Sling Site |
| | Spot Fire |
| | Staging Area |
| | Water Source |
| | Value at Risk |
| | Division Break |
| | Uncontrolled Fine Edge |
| | Contained Line |
| | Temporary Flight Restriction |
| | Wildfire Daily Fire Perimeter |

GB Team 7
9/24/2020 0902
Proj: NAD 1983 UTM Zone 12N