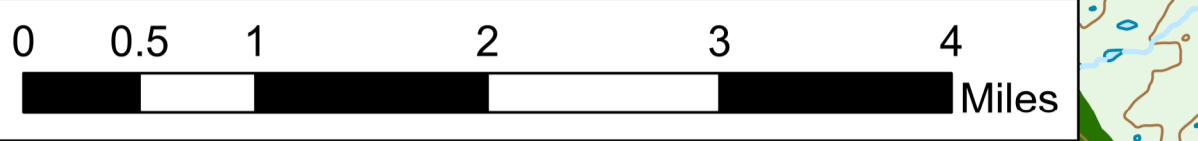
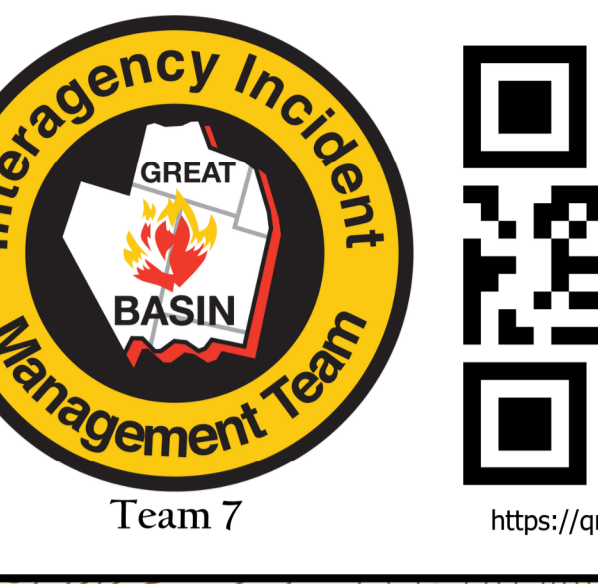


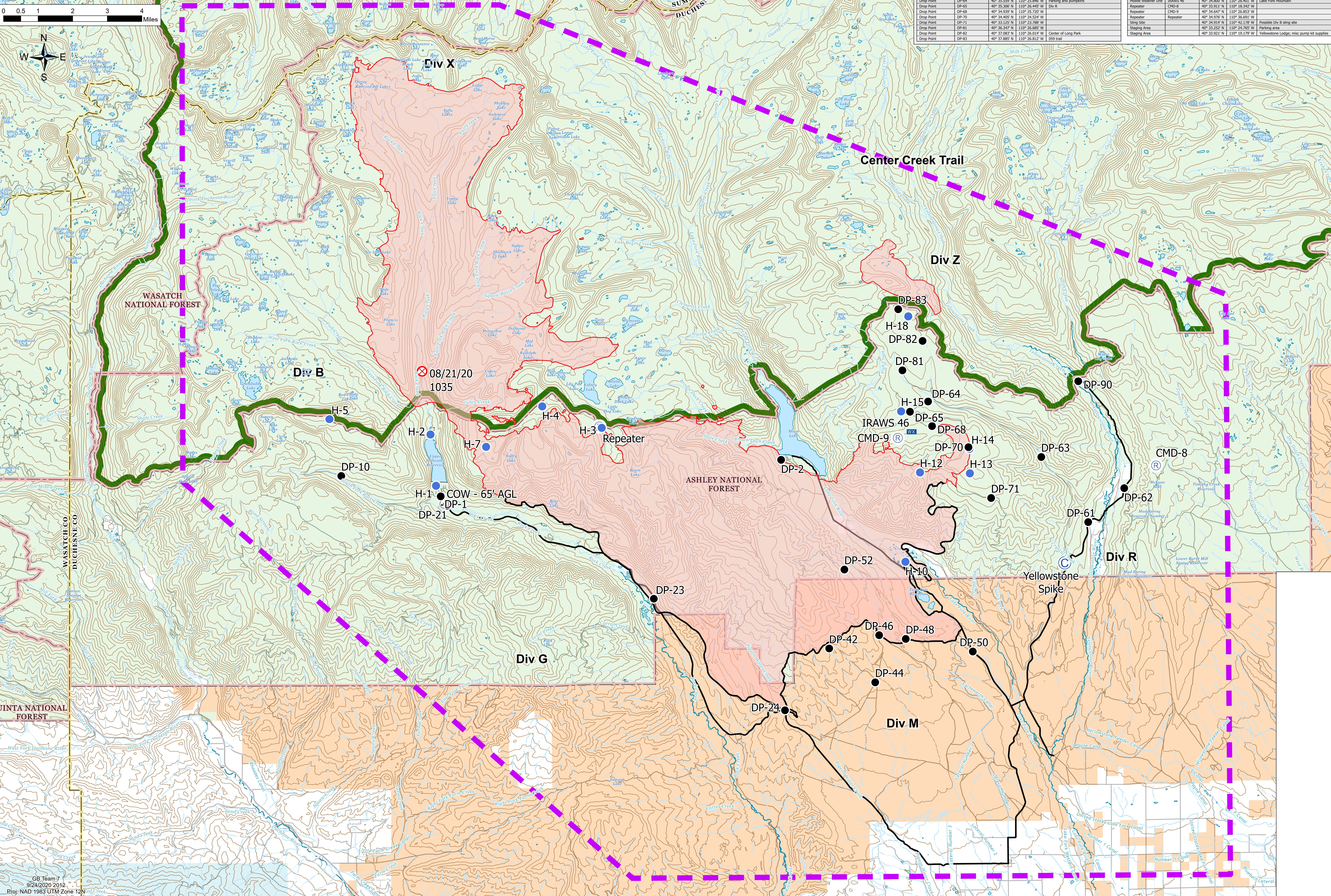
AIR OPS

East Fork
UT-ASF-100340
67,116 Acres as of 09/23/2020 2154
09/25/20



| Feature | Label | Lat | Long | Comments |
|-------------------|-------|---------------|----------------|--|
| Yellowstone Spike | | 40° 31.479' N | 110° 21.379' W | |
| Drop Point | DP-1 | 40° 33.237' N | 110° 41.930' W | |
| Drop Point | DP-10 | 40° 33.704' N | 110° 45.209' W | |
| Drop Point | DP-2 | 40° 34.116' N | 110° 30.703' W | FS guard station |
| Drop Point | DP-21 | 40° 33.060' N | 110° 41.723' W | May need to move |
| Drop Point | DP-23 | 40° 33.041' N | 110° 34.524' W | |
| Drop Point | DP-24 | 40° 27.822' N | 110° 30.621' W | |
| Drop Point | DP-42 | 40° 29.369' N | 110° 29.155' W | |
| Drop Point | DP-44 | 40° 28.512' N | 110° 27.646' W | Repaired with gravel |
| Drop Point | DP-46 | 40° 29.698' N | 110° 27.607' W | |
| Drop Point | DP-48 | 40° 29.598' N | 110° 26.632' W | |
| Drop Point | DP-50 | 40° 29.268' N | 110° 24.426' W | Junction of Bear Wallow and Moon Lake Rd |
| Drop Point | DP-52 | 40° 33.449' N | 110° 38.536' W | |
| Drop Point | DP-61 | 40° 32.500' N | 110° 20.596' W | |
| Drop Point | DP-62 | 40° 33.347' N | 110° 19.399' W | |
| Drop Point | DP-63 | 40° 34.146' N | 110° 22.126' W | |
| Drop Point | DP-64 | 40° 33.597' N | 110° 25.846' W | |
| Drop Point | DP-65 | 40° 35.306' N | 110° 26.445' W | Parking and pumpkins |
| Drop Point | DP-68 | 40° 34.939' N | 110° 25.720' W | |
| Drop Point | DP-70 | 40° 34.685' N | 110° 24.524' W | |
| Drop Point | DP-71 | 40° 33.129' N | 110° 23.788' W | |
| Drop Point | DP-78 | 40° 36.347' N | 110° 26.685' W | |
| Drop Point | DP-82 | 40° 37.083' N | 110° 36.514' W | Center of Long Park |
| Drop Point | DP-83 | 40° 37.488' N | 110° 26.812' W | 059 trail |

| Feature | Label | Lat | Long | Comments |
|---------------------|---------------|---------------|----------------|---|
| Helibase | DP-90 | 40° 36.041' N | 110° 20.889' W | |
| Helispot | H-1 | 40° 31.569' N | 110° 23.114' W | |
| Helispot | H-10 | 40° 31.533' N | 110° 36.628' W | 7,600 ft |
| Helispot | H-12 | 40° 33.775' N | 110° 36.738' W | |
| Helispot | H-13 | 40° 33.745' N | 110° 34.827' W | |
| Helispot | H-14 | 40° 34.362' N | 110° 24.490' W | Type 2 & 3 |
| Helispot | H-15 | 40° 35.316' N | 110° 26.738' W | 10,300 ft |
| Helispot | H-18 | 40° 37.265' N | 110° 26.480' W | |
| Helispot | H-2 | 40° 34.807' N | 110° 32.821' W | |
| Helispot | H-3 | 40° 34.940' N | 110° 36.613' W | |
| Helispot | H-4 | 40° 35.488' N | 110° 38.574' W | |
| Helispot | H-5 | 40° 35.745' N | 110° 45.586' W | |
| Helispot | H-7 | 40° 34.475' N | 110° 40.428' W | |
| Internet Access | | 40° 31.944' N | 110° 37.244' W | |
| Internet Access | COW - 65' AGL | 40° 33.019' N | 110° 41.772' W | |
| Mobile Weather Unit | IRAWS 46 | 40° 34.807' N | 110° 18.342' W | Lake Fork Mountain |
| Repeater | CMD-8 | 40° 33.911' N | 110° 18.342' W | Div R |
| Repeater | CMD-9 | 40° 34.647' N | 110° 36.853' W | |
| Repeater | Repeater | 40° 34.792' N | 110° 36.691' W | |
| Sling Site | | 40° 34.914' N | 110° 42.725' W | Possible Div B sling site |
| Staging Area | | 40° 33.252' N | 110° 24.765' W | Parking area |
| Staging Area | | 40° 33.921' N | 110° 19.179' W | Yellowstone Lodge; misc pump kit supplies |



CB Team 7
9/24/2020 2012
Proj: NAD 1983 UTM Zone 12N