

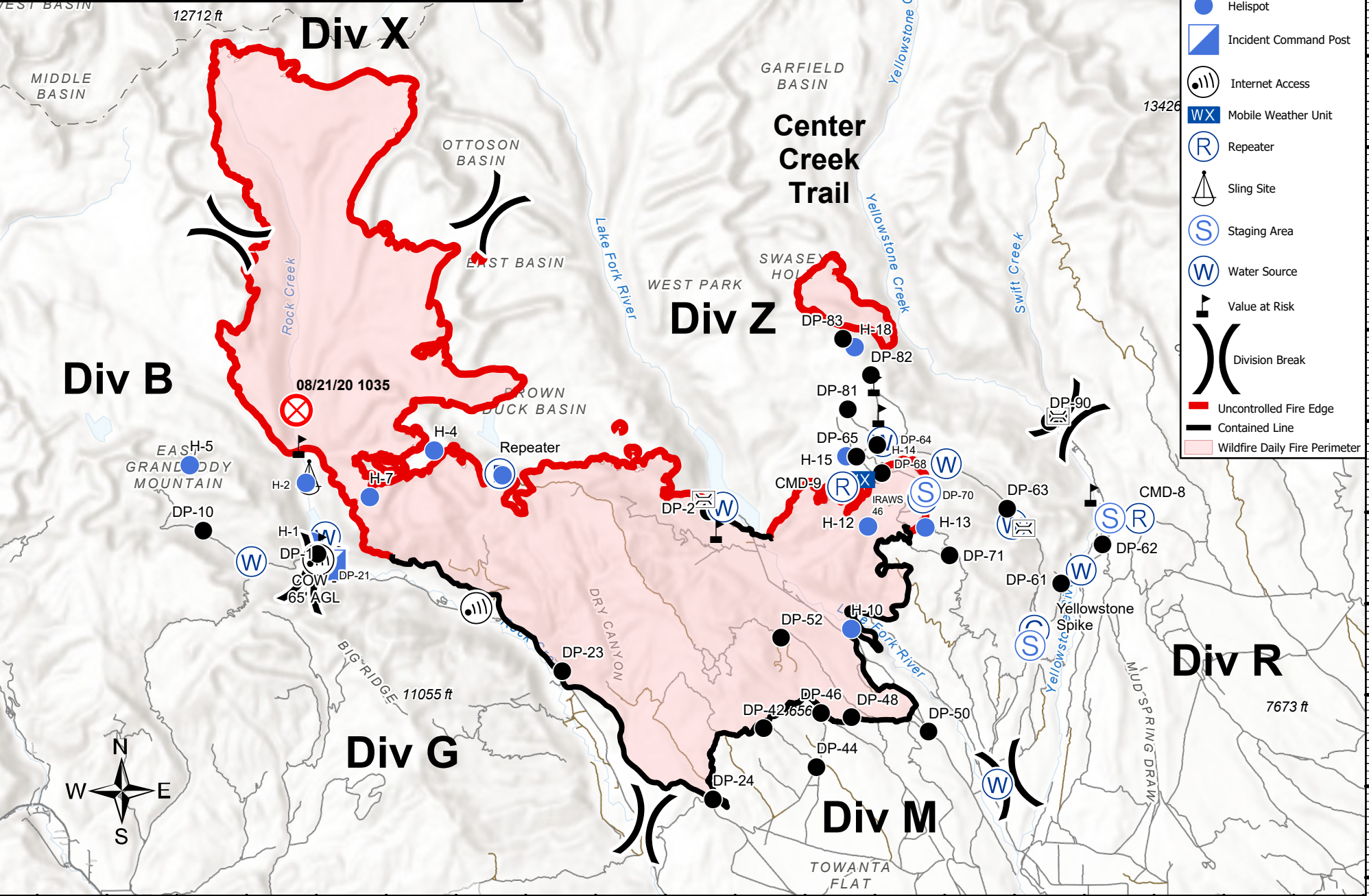
110°50'W 110°46'W 110°42'W 110°38'W 110°34'W 110°30'W 110°26'W 110°22'W 110°18'W 110°14'W

**IAP MAP**

# East Fork

UT-ASF-100340  
09/27/20  
68,342 Acres

- Bridge
- Camp
- Drop Point
- Fire Origin
- Helispot
- Incident Command Post
- Internet Access
- Mobile Weather Unit
- Repeater
- Sling Site
- Staging Area
- Water Source
- Value at Risk
- Division Break
- Uncontrolled Fire Edge
- Contained Line
- Wildfire Daily Fire Perimeter



110°50'W 110°46'W 110°42'W 110°38'W 110°34'W 110°30'W 110°26'W 110°22'W 110°18'W 110°14'W

40°48'N 40°46'N 40°44'N 40°42'N 40°40'N 40°38'N 40°36'N 40°34'N 40°32'N 40°30'N 40°28'N 40°26'N

40°48'N 40°46'N 40°44'N 40°42'N 40°40'N 40°38'N 40°36'N 40°34'N 40°32'N 40°30'N 40°28'N 40°26'N