

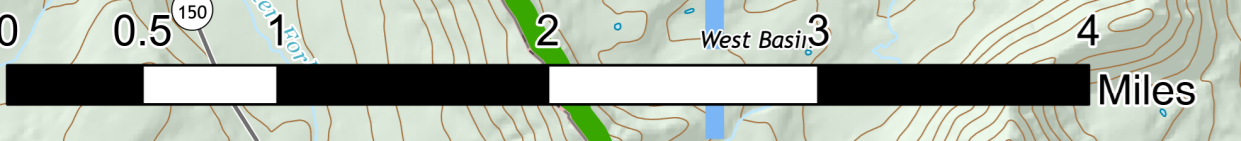
**PLANNING**

East Fork  
UT-ASF-100340

68,342 Acres as of 09/24/2020 2000  
09/27/20

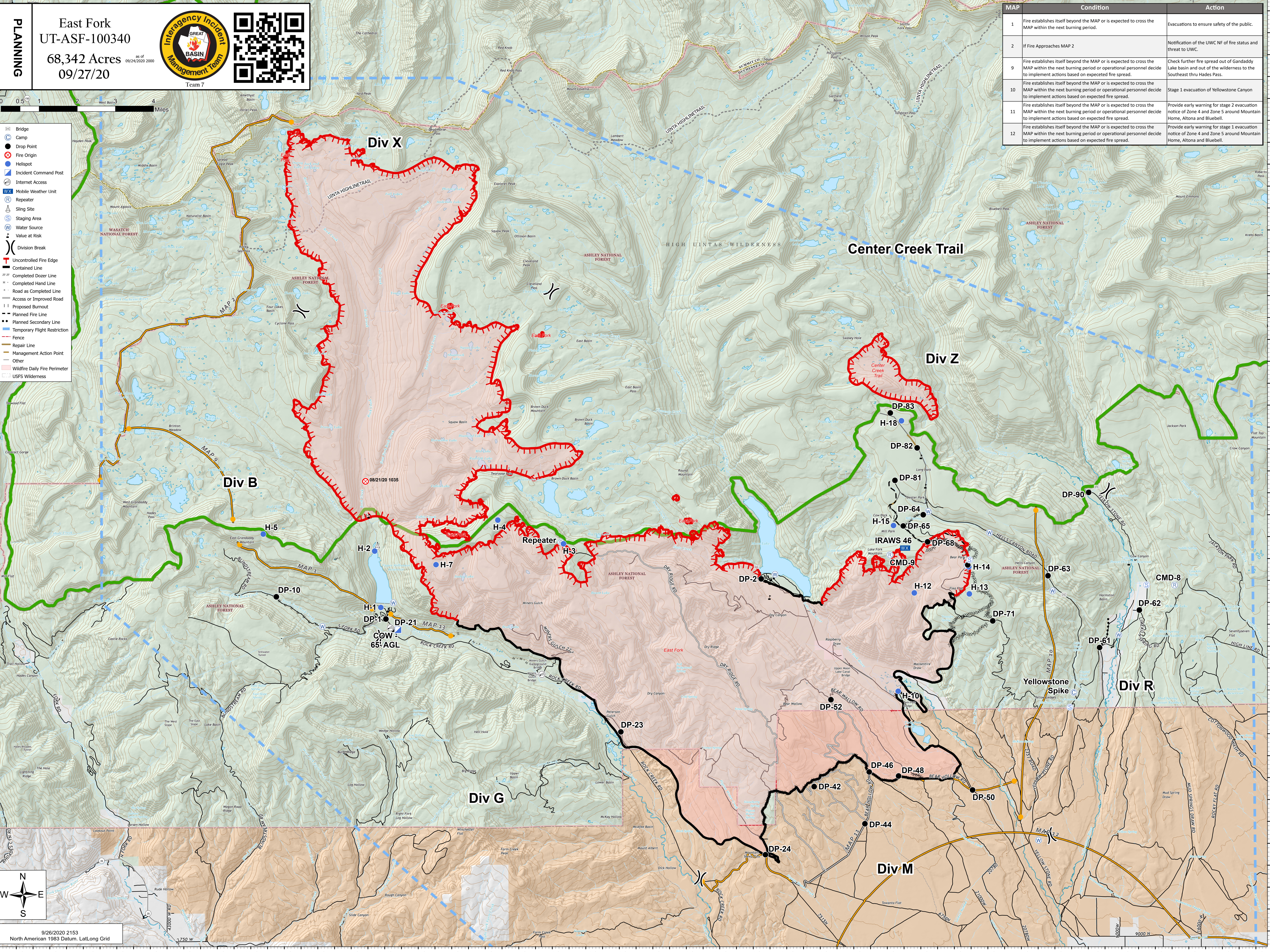



Team 7



- Bridge
- Camp
- Drop Point
- Fire Origin
- Helispot
- Incident Command Post
- Internet Access
- Mobile Weather Unit
- Repeater
- Sling Site
- Staging Area
- Water Source
- Value at Risk
- Division Break
- Uncontrolled Fire Edge
- Contained Line
- Completed Dozer Line
- Completed Hand Line
- Road as Completed Line
- Access or Improved Road
- Proposed Burnout
- Planned Fire Line
- Planned Secondary Line
- Temporary Flight Restriction
- Fence
- Repair Line
- Management Action Point
- Other
- Wildfire Daily Fire Perimeter
- USFS Wilderness

MAP	Condition	Action
1	Fire establishes itself beyond the MAP or is expected to cross the MAP within the next burning period.	Evacuations to ensure safety of the public.
2	If Fire Approaches MAP 2	Notification of the UWC NF of fire status and threat to UWC.
9	Fire establishes itself beyond the MAP or is expected to cross the MAP within the next burning period or operational personnel decide to implement actions based on expected fire spread.	Check further fire spread out of Gandaddy Lake basin and out of the wilderness to the Southeast thru Hades Pass.
10	Fire establishes itself beyond the MAP or is expected to cross the MAP within the next burning period or operational personnel decide to implement actions based on expected fire spread.	Stage 1 evacuation of Yellowstone Canyon
11	Fire establishes itself beyond the MAP or is expected to cross the MAP within the next burning period or operational personnel decide to implement actions based on expected fire spread.	Provide early warning for stage 2 evacuation notice of Zone 4 and Zone 5 around Mountain Home, Altona and Bluebell.
12	Fire establishes itself beyond the MAP or is expected to cross the MAP within the next burning period or operational personnel decide to implement actions based on expected fire spread.	Provide early warning for stage 1 evacuation notice of Zone 4 and Zone 5 around Mountain Home, Altona and Bluebell.



9/26/2020 2153  
North American 1983 Datum, LatLong Grid