
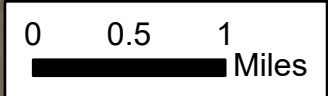
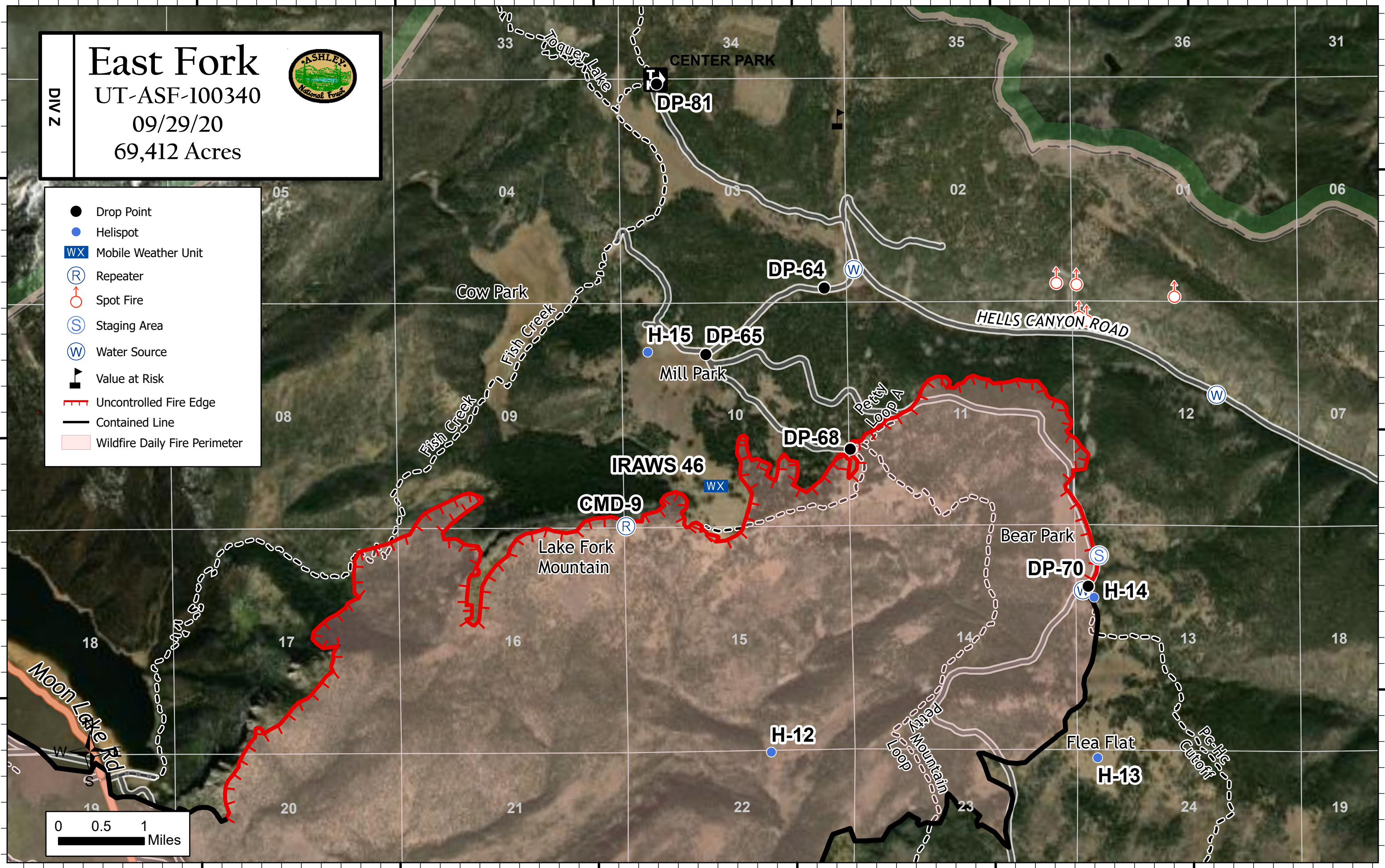


110°29'W 110°28'W 110°27'W 110°26'W 110°25'W 110°24'W

East Fork
 UT-ASF-100340
 09/29/20
 69,412 Acres



- Drop Point
- Helispot
- WX Mobile Weather Unit
- Ⓡ Repeater
- Ⓢ Spot Fire
- Ⓢ Staging Area
- Ⓢ Water Source
- ⚠ Value at Risk
- Uncontrolled Fire Edge
- Contained Line
- Wildfire Daily Fire Perimeter



110°29'W 110°28'W 110°27'W 110°26'W 110°25'W 110°24'W

40°36'N
40°35'N
40°34'N

40°36'N
40°35'N
40°34'N