



**AIR OPS**

# East Fork

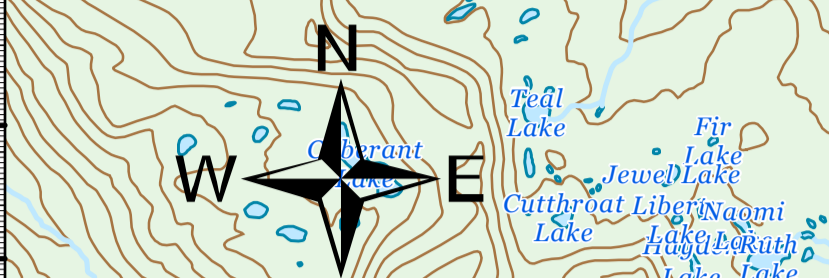
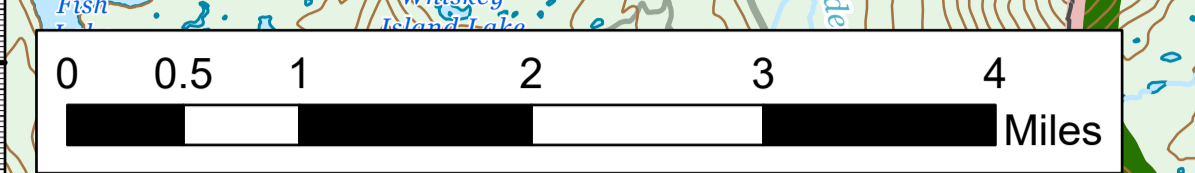
UT-ASF-100340

69,929 Acres as of 09/29/2020 2345

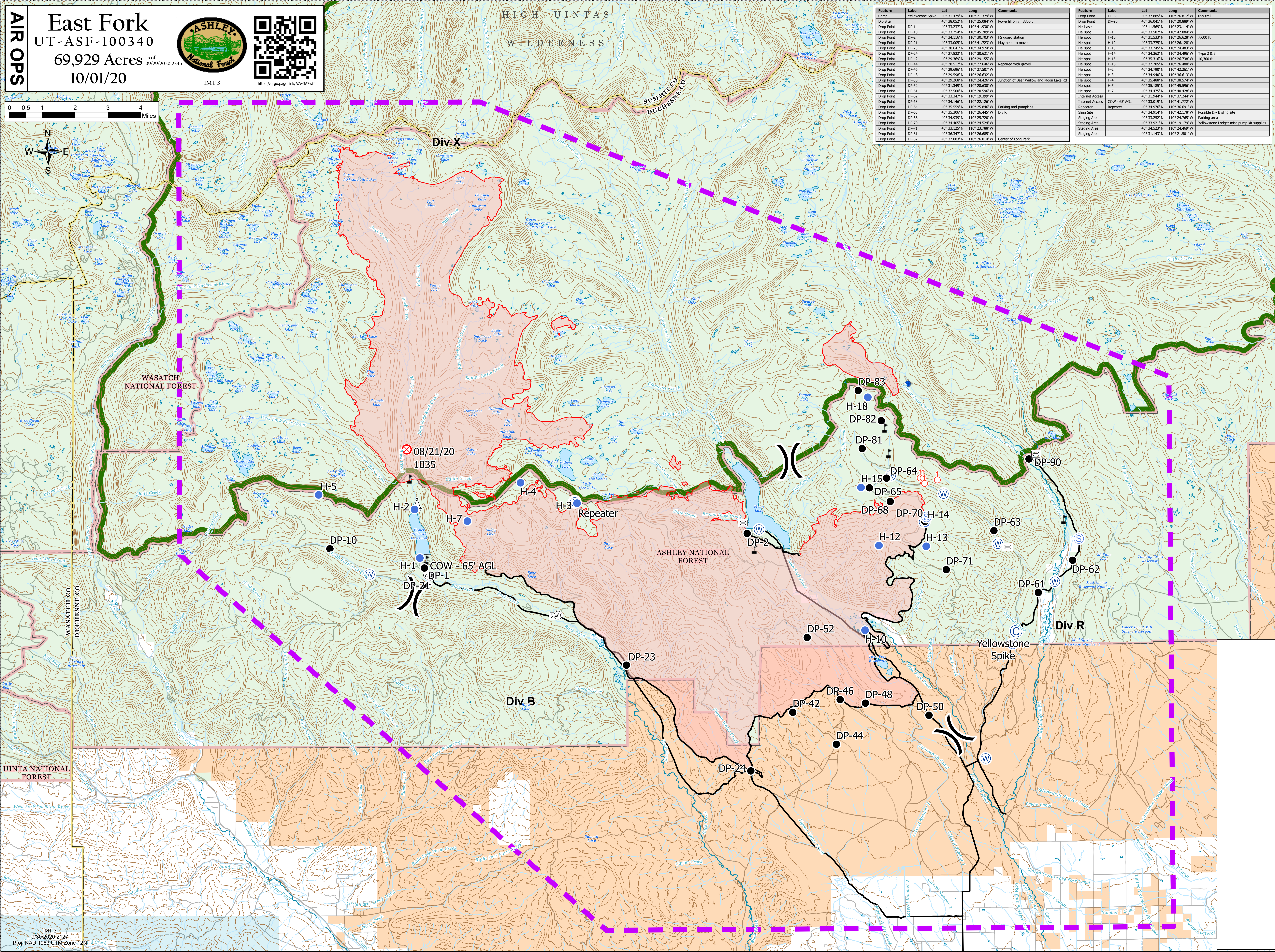
10/01/20

IMT 3 <https://argo.page.link/U7vflA7vff>



Feature	Label	Lat	Long	Comments
Drop Point	DP-83	40° 37.885' N	110° 26.812' W	059 trail
Drop Point	DP-90	40° 36.041' N	110° 20.889' W	
Helibase	H-1	40° 33.502' N	110° 23.114' W	
Helispot	H-10	40° 31.533' N	110° 26.628' W	7,600 ft
Helispot	H-12	40° 33.775' N	110° 26.129' W	
Helispot	H-13	40° 33.745' N	110° 24.483' W	
Helispot	H-14	40° 34.362' N	110° 24.496' W	Type 2 & 3
Helispot	H-15	40° 35.316' N	110° 26.738' W	10,300 ft
Helispot	H-18	40° 37.705' N	110° 26.480' W	
Helispot	H-2	40° 34.792' N	110° 42.261' W	
Helispot	H-3	40° 34.940' N	110° 36.613' W	
Helispot	H-4	40° 35.488' N	110° 38.574' W	
Helispot	H-5	40° 35.185' N	110° 45.596' W	
Helispot	H-7	40° 34.475' N	110° 49.438' W	
Internet Access	COW - 65' AGL	40° 33.019' N	110° 37.244' W	
Repeater	Repeater	40° 34.976' N	110° 36.691' W	
Staging Area	Staging Area	40° 34.914' N	110° 42.176' W	Possible Div B staging site
Staging Area	Staging Area	40° 33.921' N	110° 19.179' W	Parking area
Staging Area	Staging Area	40° 34.523' N	110° 24.469' W	Yellowstone Lodge; misc pump kit supplies
Staging Area	Staging Area	40° 31.143' N	110° 21.501' W	
Drop Point	DP-82	40° 37.083' N	110° 26.014' W	Center of Long Park



IMT 3  
9/30/2020 2127  
Proj: NAD 1983 UTM Zone 12N