

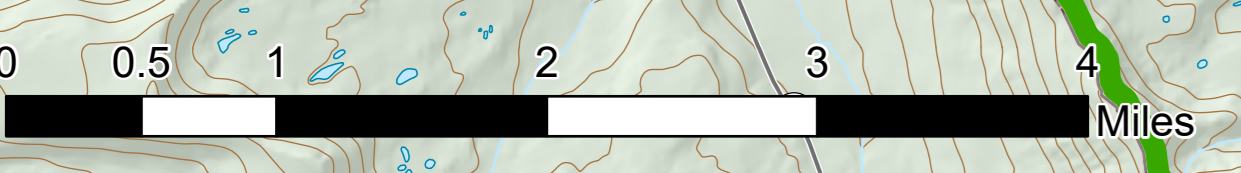


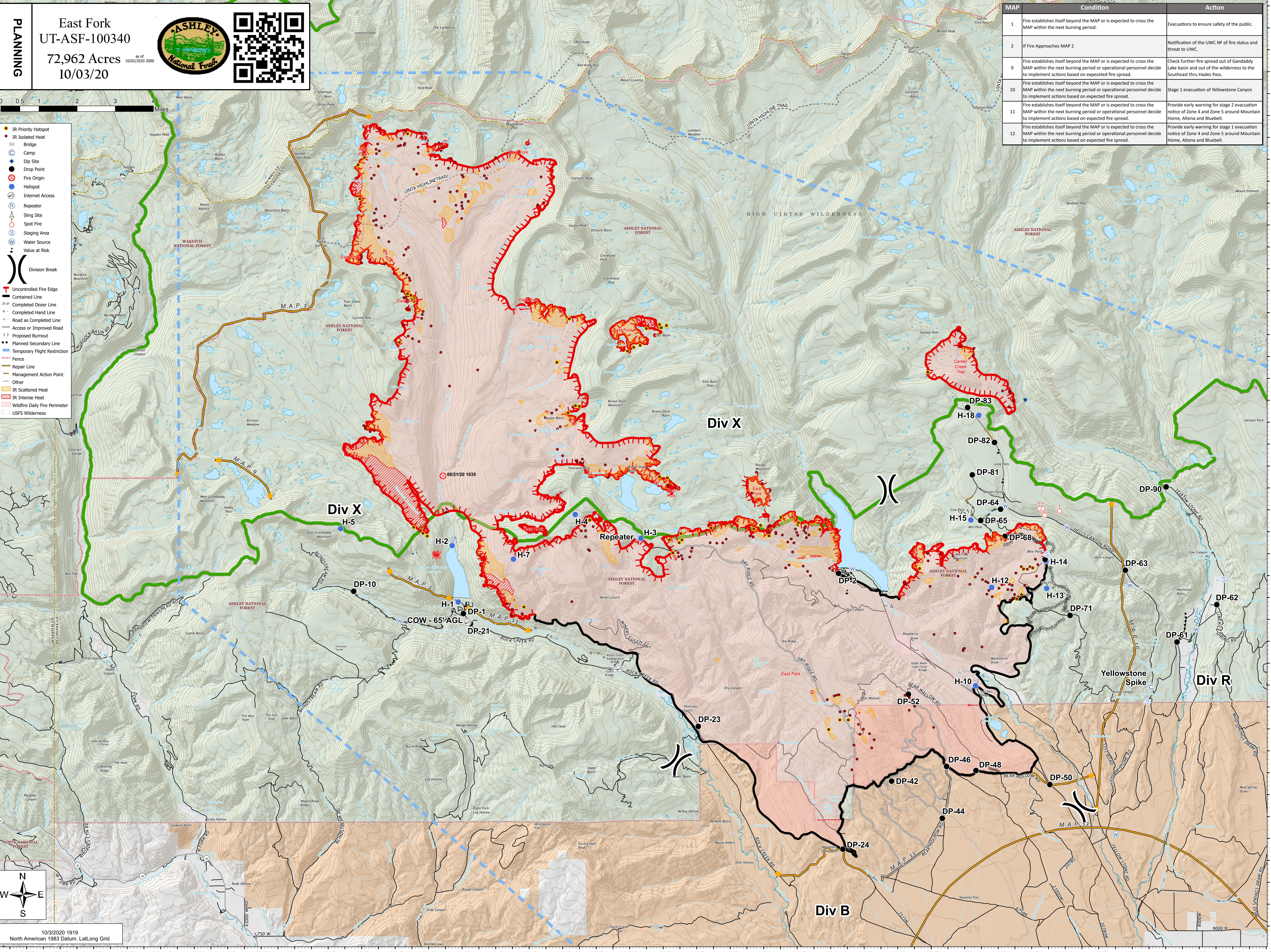
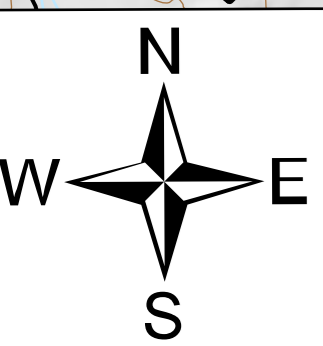
**PLANNING**

East Fork  
UT-ASF-100340  
72,962 Acres as of 10/02/2020 2000  
10/03/20

- IR Priority Hotspot
- IR Isolated Heat
- Bridge
- Camp
- Dip Site
- Drop Point
- Fire Origin
- Helispot
- Internet Access
- Repeater
- Sling Site
- Spot Fire
- Staging Area
- Water Source
- Value at Risk
- Division Break
- Uncontrolled Fire Edge
- Contained Line
- Completed Dozer Line
- Completed Hand Line
- Road as Completed Line
- Access or Improved Road
- Proposed Burnout
- Planned Secondary Line
- Temporary Flight Restriction
- Fence
- Repair Line
- Management Action Point
- Other
- IR Scattered Heat
- IR Intense Heat
- Wildfire Daily Fire Perimeter
- USFS Wilderness

| MAP | Condition   | Action  |
|-----|---|---|
| 1   | Fire establishes itself beyond the MAP or is expected to cross the MAP within the next burning period.  | Evacuations to ensure safety of the public.   |
| 2   | If Fire Approaches MAP 2  | Notification of the UWC NF of fire status and threat to UWC.  |
| 9   | Fire establishes itself beyond the MAP or is expected to cross the MAP within the next burning period or operational personnel decide to implement actions based on expected fire spread. | Check further fire spread out of Gandaddy Lake basin and out of the wilderness to the Southeast thru Hades Pass.    |
| 10  | Fire establishes itself beyond the MAP or is expected to cross the MAP within the next burning period or operational personnel decide to implement actions based on expected fire spread. | Stage 1 evacuation of Yellowstone Canyon  |
| 11  | Fire establishes itself beyond the MAP or is expected to cross the MAP within the next burning period or operational personnel decide to implement actions based on expected fire spread. | Provide early warning for stage 2 evacuation notice of Zone 4 and Zone 5 around Mountain Home, Altona and Bluebell. |
| 12  | Fire establishes itself beyond the MAP or is expected to cross the MAP within the next burning period or operational personnel decide to implement actions based on expected fire spread. | Provide early warning for stage 1 evacuation notice of Zone 4 and Zone 5 around Mountain Home, Altona and Bluebell. |

10/3/2020 1919  
North American 1983 Datum, LatLong Grid