



AIR OPS

East Fork

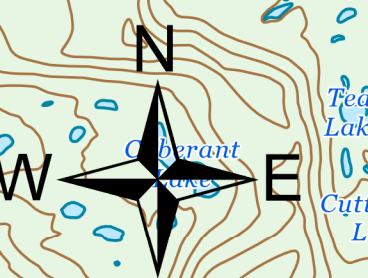
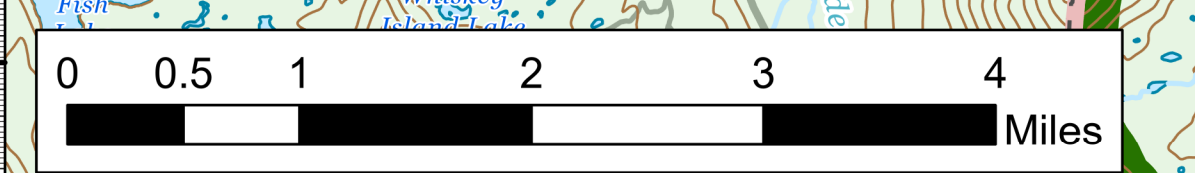
UT-ASF-100340

75,109 Acres as of 10/05/2020 1930

10/06/20

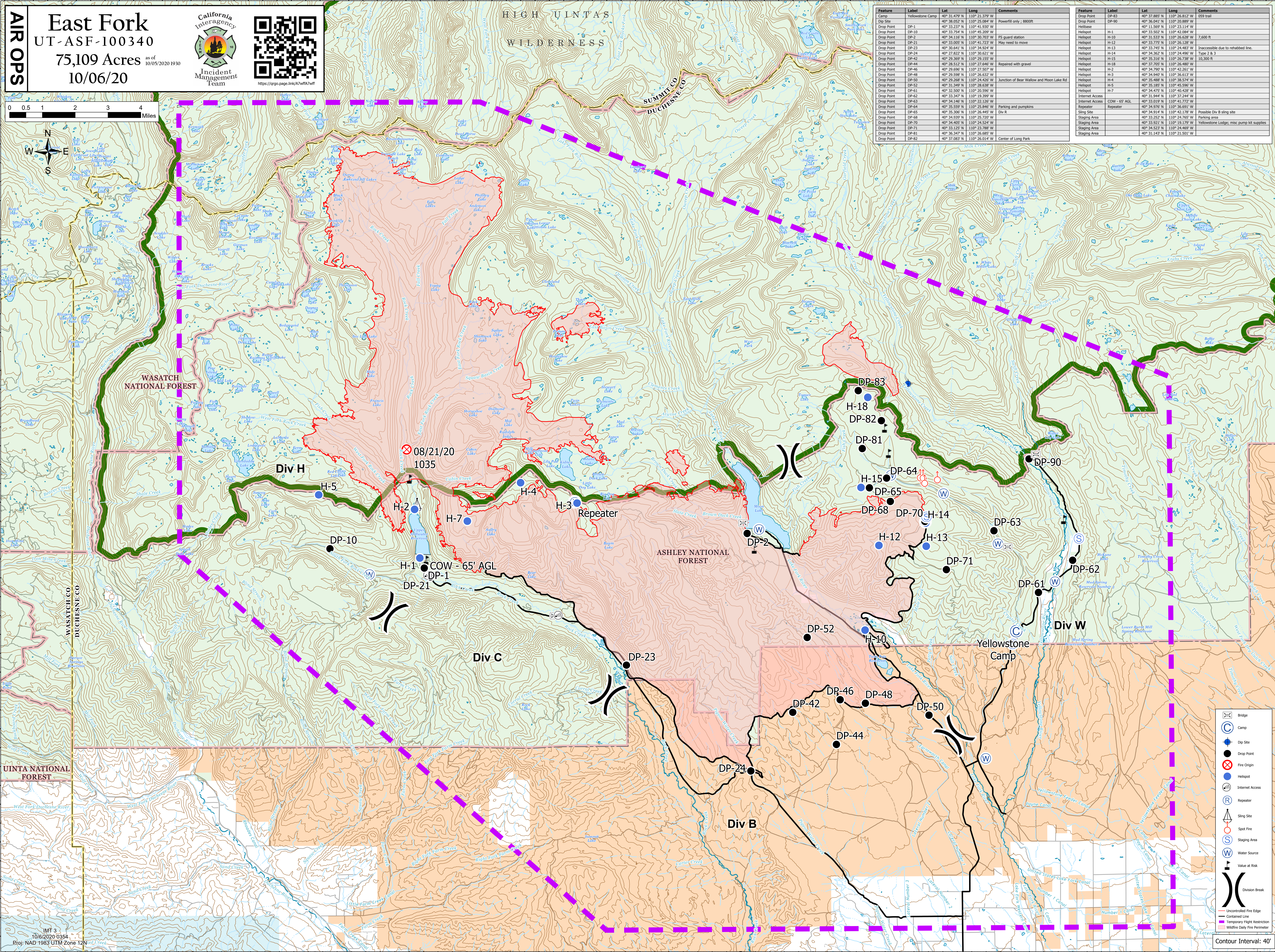



https://figo.psgs.lin/UA7Wf1a7



Feature	Label	Lat	Long	Comments
Camp	Yellowstone Camp	40° 31.479' N	110° 21.379' W	
Dip Site		40° 38.052' N	110° 25.084' W	Powerline only; 8800ft
Drop Point	DP-1	40° 33.227' N	110° 41.932' W	
Drop Point	DP-10	40° 33.754' N	110° 45.209' W	
Drop Point	DP-2	40° 34.116' N	110° 30.703' W	FS guard station
Drop Point	DP-21	40° 33.095' N	110° 41.723' W	May need to move
Drop Point	DP-23	40° 30.641' N	110° 34.924' W	
Drop Point	DP-24	40° 27.822' N	110° 30.621' W	
Drop Point	DP-42	40° 29.369' N	110° 29.155' W	
Drop Point	DP-44	40° 28.512' N	110° 27.646' W	Repaired with gravel
Drop Point	DP-46	40° 28.086' N	110° 27.507' W	
Drop Point	DP-48	40° 29.598' N	110° 26.632' W	
Drop Point	DP-50	40° 29.268' N	110° 24.426' W	Junction of Bear Wallow and Moon Lake Rd
Drop Point	DP-52	40° 31.349' N	110° 28.638' W	
Drop Point	DP-51	40° 32.500' N	110° 20.596' W	
Drop Point	DP-62	40° 33.347' N	110° 19.399' W	
Drop Point	DP-63	40° 34.146' N	110° 22.126' W	
Drop Point	DP-64	40° 33.939' N	110° 23.846' W	Parking and pumpkins
Drop Point	DP-65	40° 35.306' N	110° 26.445' W	Div R
Drop Point	DP-68	40° 34.039' N	110° 25.720' W	
Drop Point	DP-70	40° 34.405' N	110° 24.524' W	
Drop Point	DP-71	40° 33.125' N	110° 21.788' W	
Drop Point	DP-81	40° 36.347' N	110° 26.685' W	
Drop Point	DP-82	40° 37.083' N	110° 26.014' W	Center of Long Park

Feature	Label	Lat	Long	Comments
Drop Point	DP-83	40° 37.885' N	110° 26.812' W	059 trail
Drop Point	DP-90	40° 36.041' N	110° 20.889' W	
Helibase	H-1	40° 33.502' N	110° 42.084' W	
Helibase	H-10	40° 31.533' N	110° 26.628' W	7,600 ft
Helibase	H-12	40° 33.775' N	110° 26.129' W	
Helibase	H-13	40° 33.745' N	110° 24.483' W	Inaccessible due to rehabbed line.
Helibase	H-14	40° 34.362' N	110° 24.496' W	Type 2 & 3
Helibase	H-15	40° 35.316' N	110° 26.738' W	10,300 ft
Helibase	H-18	40° 37.705' N	110° 26.480' W	
Helibase	H-2	40° 34.790' N	110° 42.261' W	
Helibase	H-3	40° 34.940' N	110° 36.613' W	
Helibase	H-4	40° 35.488' N	110° 38.574' W	
Helibase	H-5	40° 35.105' N	110° 45.596' W	
Helibase	H-7	40° 34.475' N	110° 40.428' W	
Internet Access		40° 31.944' N	110° 37.244' W	
Internet Access	CCW - 65' AGL	40° 33.019' N	110° 41.772' W	
Repeater		40° 34.976' N	110° 36.691' W	
Staging Area		40° 34.914' N	110° 42.178' W	Possible Div B staging site
Staging Area		40° 33.252' N	110° 41.765' W	Parking area
Staging Area		40° 33.921' N	110° 19.179' W	Yellowstone Lodge; misc pump kit supplies
Staging Area		40° 34.523' N	110° 24.469' W	
Staging Area		40° 31.143' N	110° 21.501' W	



	Bridge
	Camp
	Dip Site
	Drop Point
	Fire Origin
	Helibase
	Internet Access
	Repeater
	Staging Area
	Spot Fire
	Water Source
	Value at Risk
	Division Break
	Uncontoured Fire Edge
	Contained Line
	Temporary Flight Restriction
	Wildfire Daily Fire Perimeter

IMT 3
10/6/2020 0354
Proj: NAD 1983 UTM Zone 12N

Contour Interval: 40'