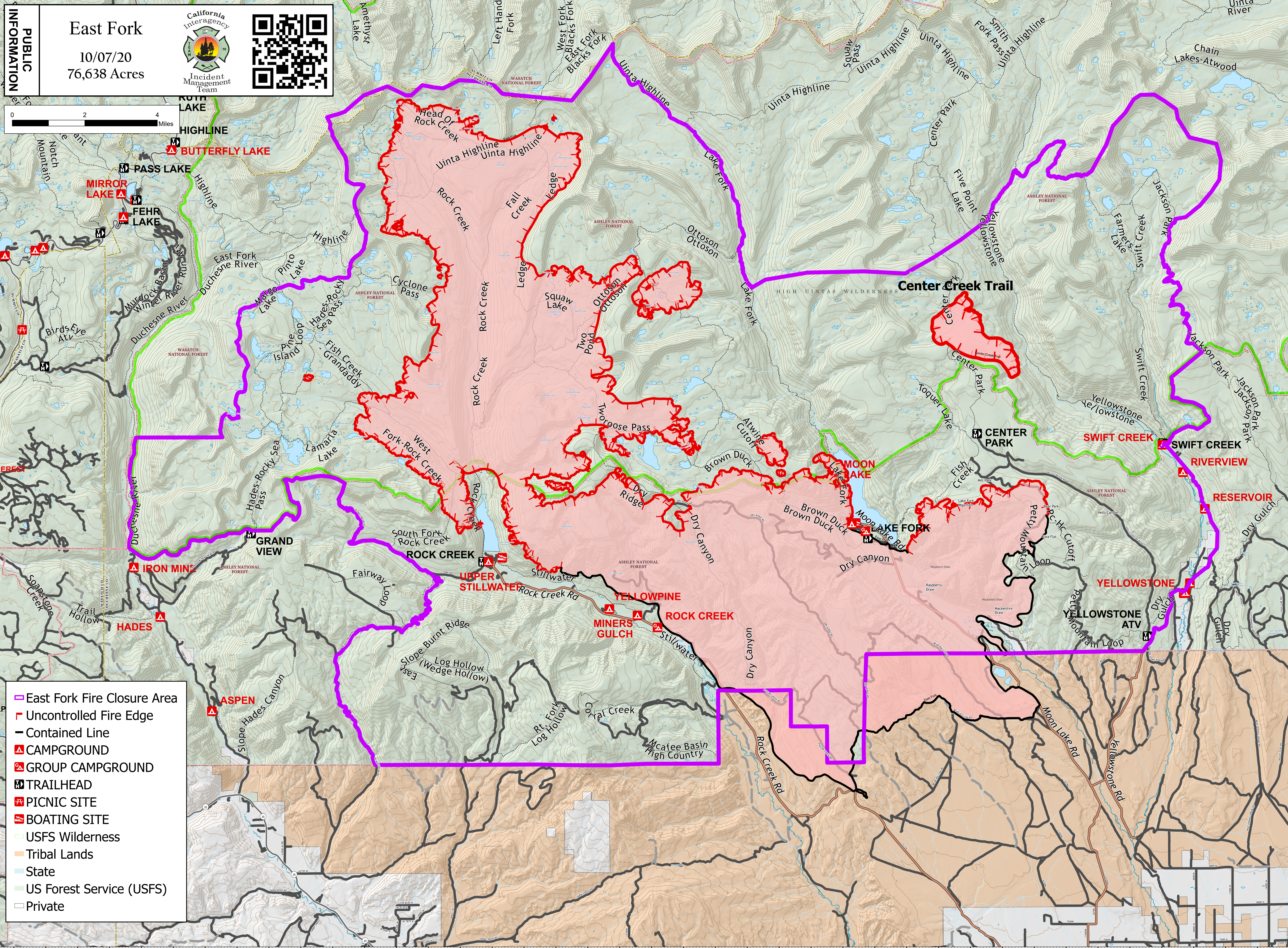
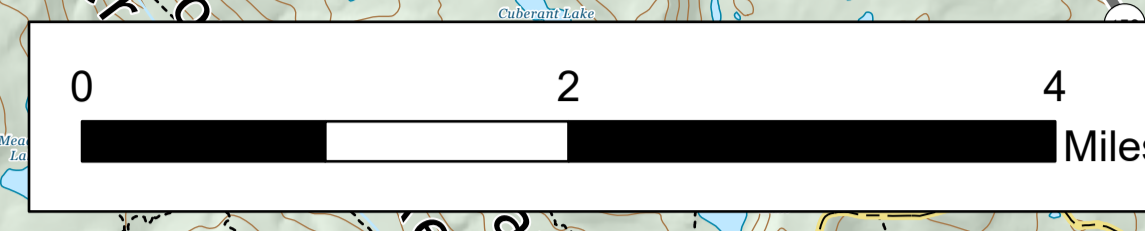


PUBLIC INFORMATION

East Fork
10/07/20
76,638 Acres





- ▭ East Fork Fire Closure Area
- ▬ Uncontrolled Fire Edge
- Contained Line
- ▲ CAMPGROUND
- ▲ GROUP CAMPGROUND
- ▲ TRAILHEAD
- ▲ PICNIC SITE
- ▲ BOATING SITE
- USFS Wilderness
- Tribal Lands
- State
- US Forest Service (USFS)
- Private

110°57'W 110°56'W 110°55'W 110°54'W 110°53'W 110°52'W 110°51.01'W 110°50'W 110°49'W 110°48'W 110°47'W 110°46'W 110°45'W 110°44'W 110°43'W 110°42'W 110°41'W 110°40'W 110°39'W 110°38'W 110°37'W 110°36.01'W 110°35'W 110°34'W 110°33'W 110°32'W 110°31'W 110°30'W 110°29'W 110°28'W 110°27'W 110°26'W 110°25'W 110°24'W 110°23'W 110°22'W 110°21.01'W 110°20'W 110°19'W 110°18'W 110°17'W

40°25'N 40°26'N 40°27'N 40°28'N 40°29'N 40°30'N 40°31'N 40°32'N 40°33'N 40°34'N 40°35'N 40°36'N 40°37'N 40°38'N 40°39'N 40°40'N 40°41'N 40°42'N 40°43'N 40°44'N 40°45'N 40°46'N