

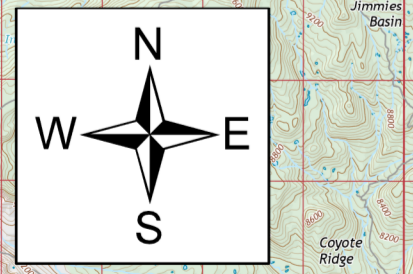


OPERATIONS

East Fork
UT-ASF-100340
10/07/20
75,109 acres
Acres from IR 10/05/2020 1930

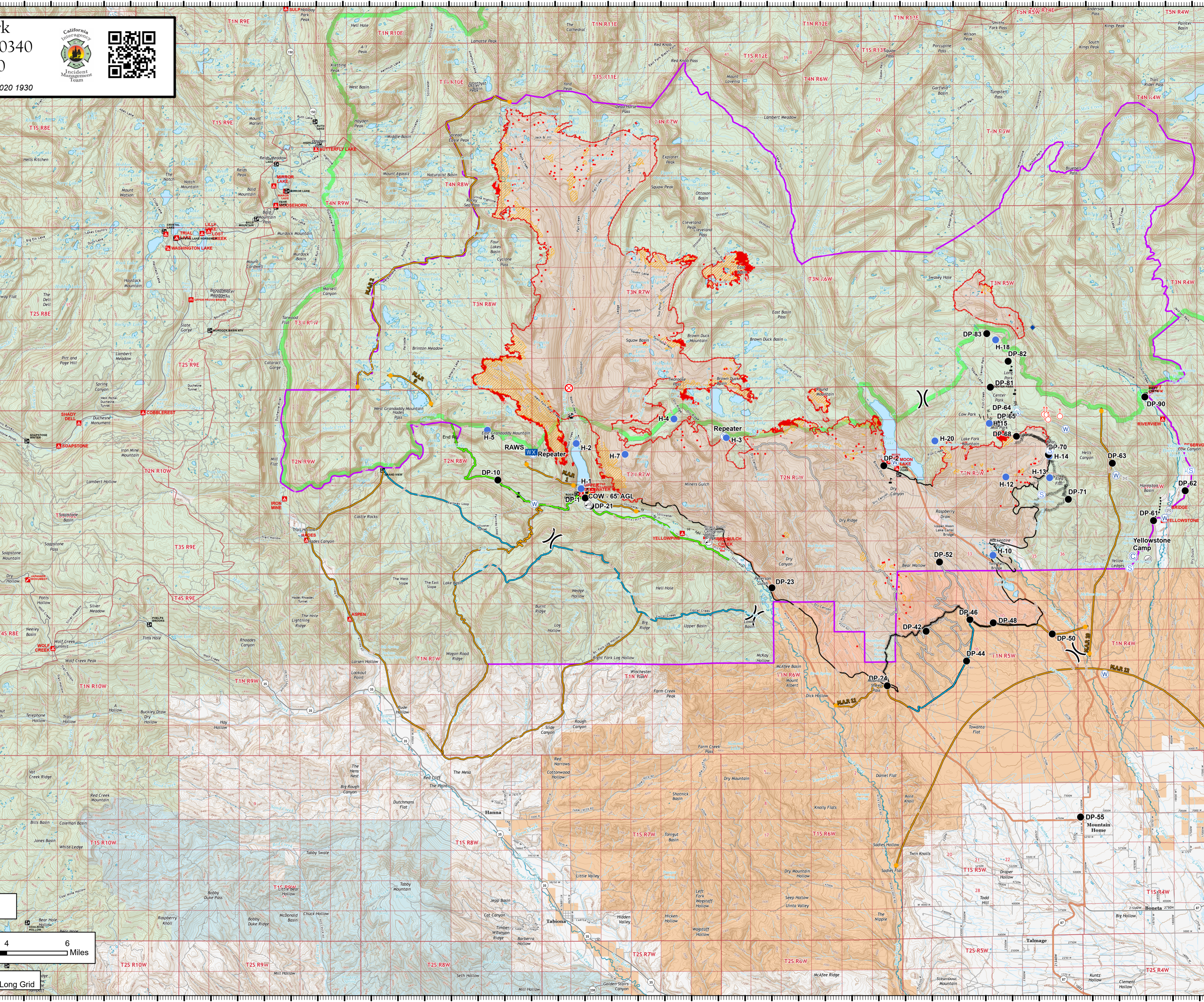
- Bridge
- Camp
- Dip Site
- Drop Point
- Fire Origin
- Helispot
- Internet Access
- Mobile Weather Unit
- Repeater
- Safety Zone
- Sling Site
- Spot Fire
- Staging Area
- Water Source
- Value at Risk
- Division Break
- Primary
- Alternate
- Contingency
- Uncontrolled Fire Edge
- Contained Line
- Completed Dozer Line
- Completed Hand Line
- Road as Completed Line
- Access or Improved Road
- Proposed Burnout
- Planned Secondary Line
- Management Action Point
- Wildfire Daily Fire Perimeter
- IR Intense Heat
- IR Scattered Heat
- East Fork Fire Closure Area
- USFS Wilderness
- Tribal
- State
- US Forest Service (USFS)
- Private



Contour interval: 40'



10/7/2020 0410
 North American 1983 Datum, LatLong Grid



40°46'N
40°44'N
40°42'N
40°40'N
40°38'N
40°36'N
40°34'N
40°32'N
40°30'N
40°28'N
40°26'N
40°23.99'N
40°22'N
40°20'N

40°47'N
40°45'N
40°43'N
40°41'N
40°38.99'N
40°37'N
40°35'N
40°33'N
40°31'N
40°29'N
40°27'N
40°25'N
40°23'N
40°21'N
40°19'N

111°8'W 111°6.01'W 111°4'W 111°2'W 111°0'W 110°58'W 110°56'W 110°54'W 110°52'W 110°50'W 110°48'W 110°46'W 110°44'W 110°42'W 110°40'W 110°38'W 110°35'W 110°33'W 110°31'W 110°29'W 110°27'W 110°25'W 110°23'W 110°20'W