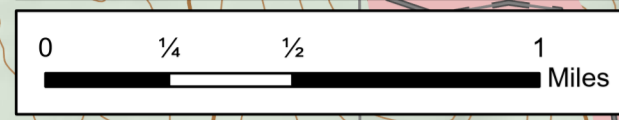


OPERATIONS

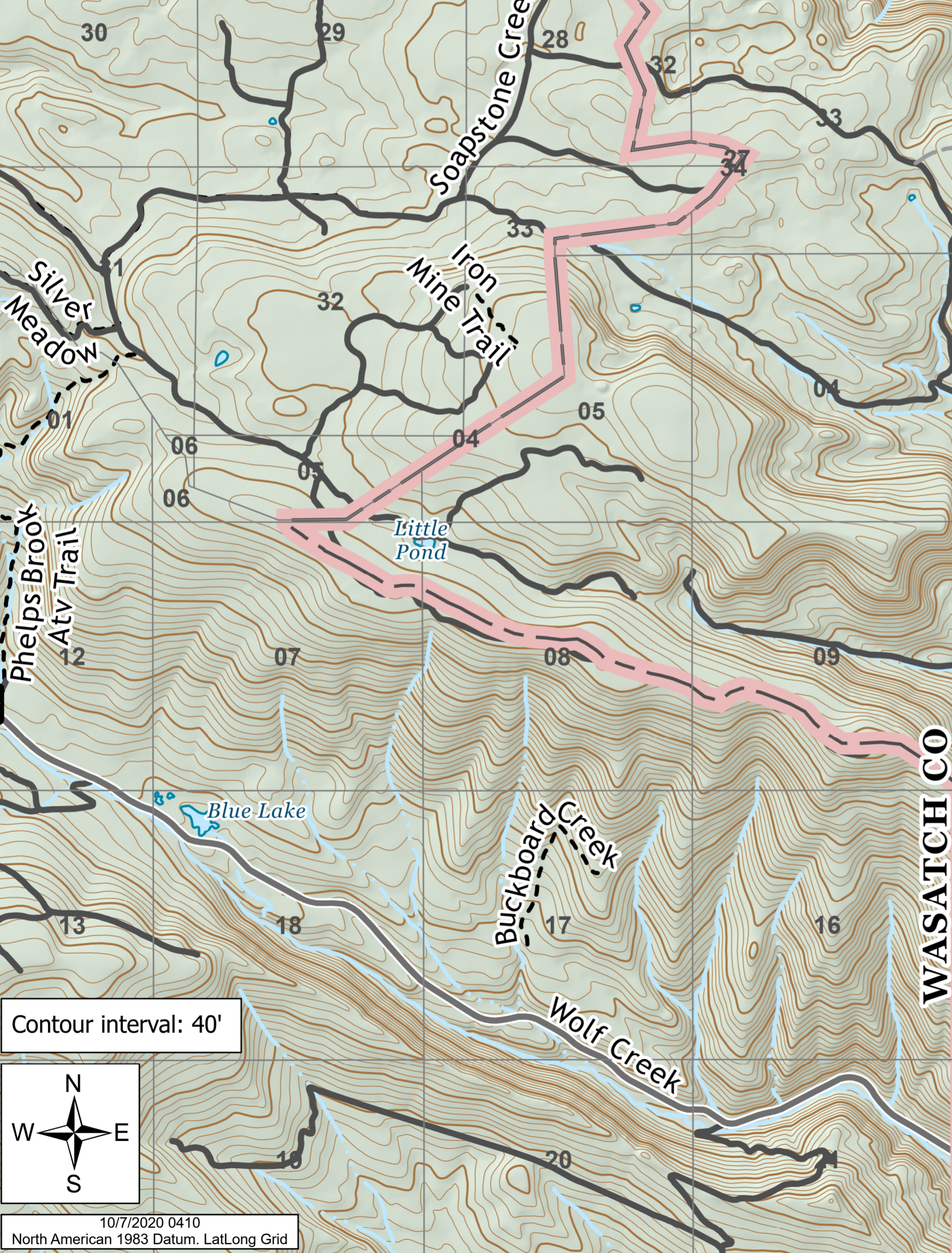
Rhoads Canyon 2
 UT-ASF-100431
 10/07/20
 Unknown acres
 Acres from IR 10/05/2020 1930





- Primary
- Alternate
- Contingency
- East Fork Fire Closure Area
- USFS Wilderness
- Tribal Lands
- US Forest Service (USFS)
- Private

UINTA NATIONAL FOREST



Contour interval: 40'



10/7/2020 0410
 North American 1983 Datum, Lat/Long Grid



IRON MINE

HADES

ASHLEY NATIONAL FOREST

ASPEN

35

110°58'W 110°57'W 110°56'W 110°55'W 110°54'W 110°53'W 110°52'W 110°51.01'W 110°50'W 110°49'W

40°33'N
40°32'N
40°31'N
40°30'N
40°29'N
40°28'N

40°33'N
40°32'N
40°31'N
40°30'N
40°29'N
40°28'N