

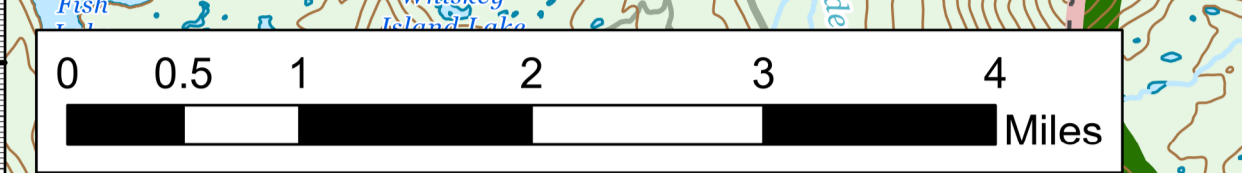
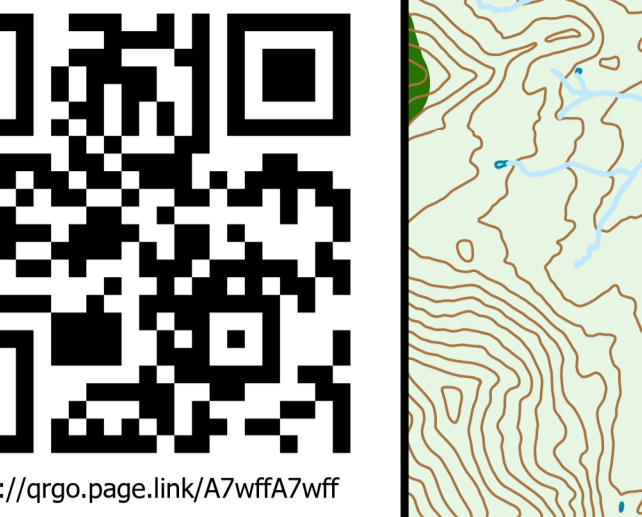
**AIR OPS**

# East Fork

## UT-ASF-100340

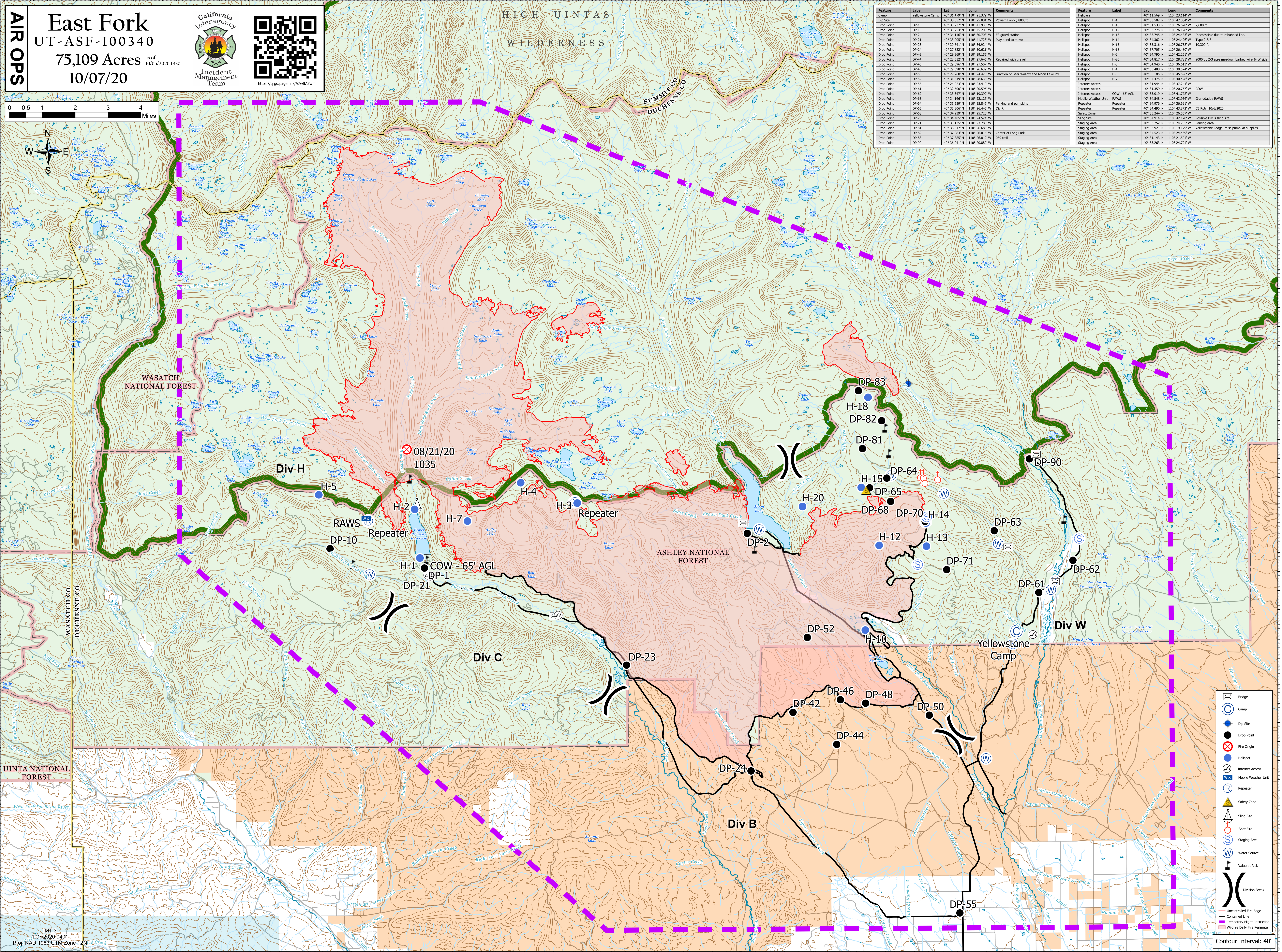
75,109 Acres as of 10/05/2020 1930

10/07/20



Feature	Label	Lat	Long	Comments
Camp	Yellowstone Camp	40° 31.479' N	110° 21.379' W	
Dip Site		40° 30.852' N	110° 25.084' W	Powerfill only .8800T
Drop Point	DP-10	40° 31.577' N	110° 41.707' W	
Drop Point	DP-10	40° 31.754' N	110° 45.209' W	
Drop Point	DP-2	40° 34.116' N	110° 36.703' W	FS guard station
Drop Point	DP-21	40° 31.005' N	110° 41.723' W	May need to move
Drop Point	DP-23	40° 30.641' N	110° 34.924' W	
Drop Point	DP-24	40° 27.822' N	110° 36.621' W	
Drop Point	DP-42	40° 28.512' N	110° 29.159' W	
Drop Point	DP-44	40° 28.512' N	110° 27.646' W	Repaired with gravel
Drop Point	DP-46	40° 28.696' N	110° 27.507' W	
Drop Point	DP-48	40° 28.588' N	110° 26.632' W	
Drop Point	DP-48	40° 28.268' N	110° 24.426' W	Junction of Bear Walk and Moon Lake Rd
Drop Point	DP-52	40° 31.349' N	110° 28.638' W	
Drop Point	DP-55	40° 24.023' N	110° 23.017' W	
Drop Point	DP-61	40° 33.500' N	110° 26.596' W	
Drop Point	DP-62	40° 33.347' N	110° 19.399' W	
Drop Point	DP-63	40° 31.862' N	110° 25.138' W	
Drop Point	DP-64	40° 35.559' N	110° 25.846' W	Parking and pumpkins
Drop Point	DP-65	40° 35.306' N	110° 26.445' W	Div R
Drop Point	DP-68	40° 34.366' N	110° 26.632' W	
Drop Point	DP-70	40° 34.405' N	110° 24.524' W	
Drop Point	DP-71	40° 33.120' N	110° 23.788' W	
Drop Point	DP-71	40° 34.362' N	110° 26.685' W	
Drop Point	DP-82	40° 37.083' N	110° 26.014' W	Center of Long Park
Drop Point	DP-83	40° 37.885' N	110° 26.812' W	059 trail
Drop Point	DP-90	40° 36.944' N	110° 20.889' W	

Feature	Label	Lat	Long	Comments
Helibase	H-1	40° 11.569' N	110° 23.114' W	
Helipoc	H-10	40° 33.502' N	110° 42.084' W	
Helipoc	H-10	40° 33.523' N	110° 26.632' W	7,650 ft
Helipoc	H-12	40° 33.775' N	110° 26.128' W	
Helipoc	H-13	40° 33.745' N	110° 24.483' W	Inoperable due to rehabbed line.
Helipoc	H-14	40° 34.362' N	110° 24.986' W	Type 2 & 3
Helipoc	H-15	40° 35.316' N	110° 26.738' W	10,300 ft
Helipoc	H-18	40° 37.705' N	110° 26.489' W	
Helipoc	H-2	40° 34.786' N	110° 42.801' W	
Helipoc	H-20	40° 34.817' N	110° 28.781' W	9000ft; 2/3 acre meadow, barbed wire @ W side
Helipoc	H-3	40° 34.940' N	110° 36.613' W	
Helipoc	H-4	40° 35.488' N	110° 38.527' W	
Helipoc	H-5	40° 35.185' N	110° 45.586' W	
Helipoc	H-7	40° 34.475' N	110° 40.428' W	
Internet Access	Internet Access	40° 31.944' N	110° 37.244' W	
Internet Access	Internet Access	40° 31.359' N	110° 20.767' W	CCW
Internet Access	Internet Access	40° 33.019' N	110° 41.272' W	
Mobile Weather Unit	Mobile Weather Unit	40° 34.548' N	110° 43.954' W	Granddaddy RAWS
Repeater	Repeater	40° 34.976' N	110° 36.691' W	CS Rpt; 10/6/2020
Repeater	Repeater	40° 34.400' N	110° 43.672' W	
Safety Zone	Safety Zone	40° 35.244' N	110° 26.567' W	
Sling Site	Sling Site	40° 34.914' N	110° 42.178' W	Possible Div B sling site
Staging Area	Staging Area	40° 33.252' N	110° 24.765' W	Parking area
Staging Area	Staging Area	40° 31.921' N	110° 19.178' W	Yellowstone Lodge; misc pump kit supplies
Staging Area	Staging Area	40° 34.523' N	110° 24.469' W	
Staging Area	Staging Area	40° 31.143' N	110° 21.501' W	
Staging Area	Staging Area	40° 33.263' N	110° 24.791' W	



IMT 3  
10/7/2020 0401  
Proj: NAD 1983 UTM Zone 12N

- Bridge
- Camp
- Dip Site
- Drop Point
- Fire Origin
- Helipoc
- Internet Access
- Mobile Weather Unit
- Repeater
- Safety Zone
- Sling Site
- Spot Fire
- Staging Area
- Water Source
- Value at Risk
- Division Break
- Uncontrolled Fire Edge
- Contained Line
- Temporary Flight Restriction
- Wildfire Daily Fire Perimeter

Contour Interval: 40'