



AIR OPS

East Fork

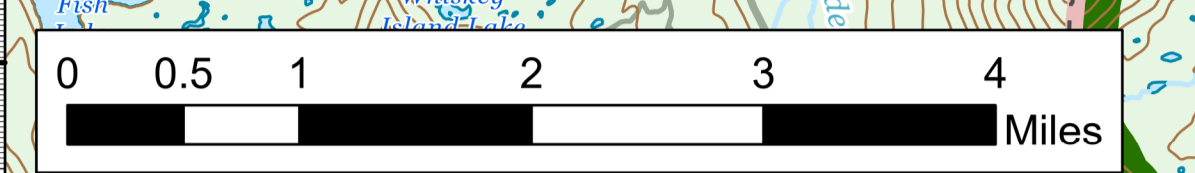
UT-ASF-100340

76,638 Acres as of 10/07/2020 0235

10/07/20

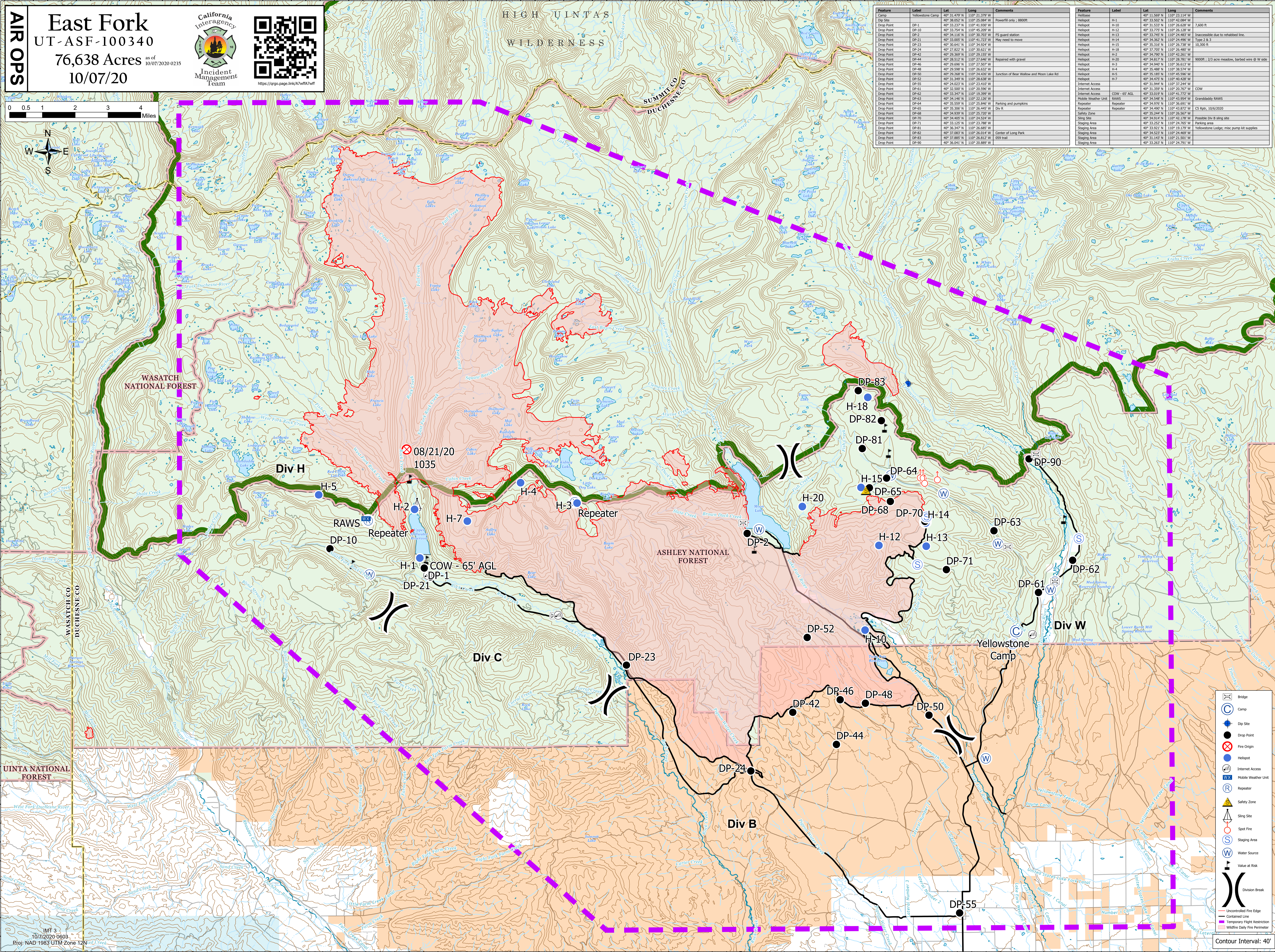



https://argo.page.link/U7vflA7vmt



| Feature | Label | Lat | Long | Comments |
|------------|------------------|---------------|----------------|----------------------------------------|
| Camp | Yellowstone Camp | 40° 31.479' N | 110° 21.379' W | |
| Drop Site | DP-1 | 40° 30.852' N | 110° 25.084' W | Powerlift only .8800T |
| Drop Point | DP-10 | 40° 31.577' N | 110° 41.707' W | |
| Drop Point | DP-2 | 40° 34.116' N | 110° 36.703' W | FS guard station |
| Drop Point | DP-21 | 40° 31.059' N | 110° 41.723' W | May need to move |
| Drop Point | DP-23 | 40° 30.641' N | 110° 34.924' W | |
| Drop Point | DP-24 | 40° 27.822' N | 110° 36.621' W | |
| Drop Point | DP-42 | 40° 31.866' N | 110° 29.159' W | |
| Drop Point | DP-44 | 40° 28.512' N | 110° 27.646' W | Repaired with gravel |
| Drop Point | DP-46 | 40° 29.696' N | 110° 27.507' W | |
| Drop Point | DP-48 | 40° 29.568' N | 110° 26.632' W | |
| Drop Point | DP-50 | 40° 29.268' N | 110° 24.426' W | Junction of Bear Walk and Moon Lake Rd |
| Drop Point | DP-52 | 40° 31.349' N | 110° 28.638' W | |
| Drop Point | DP-55 | 40° 24.023' N | 110° 23.019' W | |
| Drop Point | DP-61 | 40° 33.500' N | 110° 26.596' W | |
| Drop Point | DP-62 | 40° 33.347' N | 110° 19.399' W | |
| Drop Point | DP-63 | 40° 31.862' N | 110° 22.138' W | |
| Drop Point | DP-64 | 40° 35.559' N | 110° 25.846' W | Parking and pumps |
| Drop Point | DP-65 | 40° 35.306' N | 110° 26.445' W | Div R |
| Drop Point | DP-68 | 40° 34.968' N | 110° 25.632' W | |
| Drop Point | DP-70 | 40° 34.405' N | 110° 24.524' W | |
| Drop Point | DP-71 | 40° 33.129' N | 110° 23.788' W | |
| Drop Point | DP-81 | 40° 36.367' N | 110° 26.685' W | |
| Drop Point | DP-82 | 40° 37.083' N | 110° 26.014' W | Center of Long Park |
| Drop Point | DP-83 | 40° 37.889' N | 110° 26.812' W | 059 trail |
| Drop Point | DP-90 | 40° 36.944' N | 110° 20.889' W | |

| Feature | Label | Lat | Long | Comments |
|---------------------|---------------------|---------------|----------------|------------------------------------------------|
| Helibase | H-1 | 40° 11.569' N | 110° 23.114' W | |
| Helipoc | H-10 | 40° 33.502' N | 110° 42.084' W | |
| Helipoc | H-12 | 40° 33.775' N | 110° 26.128' W | 7,650 ft |
| Helipoc | H-13 | 40° 33.745' N | 110° 24.483' W | Inoperable due to rehabbed line. |
| Helipoc | H-14 | 40° 34.362' N | 110° 24.986' W | Type 2 & 3 |
| Helipoc | H-15 | 40° 35.316' N | 110° 26.738' W | 10,300 ft |
| Helipoc | H-18 | 40° 37.705' N | 110° 26.489' W | |
| Helipoc | H-2 | 40° 34.790' N | 110° 42.901' W | |
| Helipoc | H-20 | 40° 34.817' N | 110° 28.781' W | 9000ft ; 2/3 acre meadow, barbed wire @ W side |
| Helipoc | H-3 | 40° 34.940' N | 110° 36.613' W | |
| Helipoc | H-4 | 40° 35.488' N | 110° 38.527' W | |
| Helipoc | H-5 | 40° 35.185' N | 110° 45.586' W | |
| Helipoc | H-7 | 40° 34.475' N | 110° 40.428' W | |
| Internet Access | Internet Access | 40° 31.944' N | 110° 37.244' W | |
| Internet Access | Internet Access | 40° 31.359' N | 110° 20.767' W | CCOW |
| Internet Access | Internet Access | 40° 33.019' N | 110° 41.272' W | |
| Mobile Weather Unit | Mobile Weather Unit | 40° 34.548' N | 110° 43.954' W | Granddaddy RAWS |
| Repeater | Repeater | 40° 34.976' N | 110° 36.691' W | CS Rpt; 10/6/2020 |
| Repeater | Repeater | 40° 34.490' N | 110° 43.672' W | |
| Safety Zone | Safety Zone | 40° 35.244' N | 110° 26.567' W | |
| Sling Site | Sling Site | 40° 34.914' N | 110° 42.178' W | Possible Div B sling site |
| Staging Area | Staging Area | 40° 33.252' N | 110° 24.765' W | Parking area |
| Staging Area | Staging Area | 40° 31.921' N | 110° 19.179' W | Yellowstone Lodge; misc pump kit supplies |
| Staging Area | Staging Area | 40° 34.523' N | 110° 24.469' W | |
| Staging Area | Staging Area | 40° 31.143' N | 110° 21.501' W | |
| Staging Area | Staging Area | 40° 33.263' N | 110° 24.791' W | |



- Bridge
- Camp
- Dip Site
- Drop Point
- Fire Origin
- Helipoc
- Internet Access
- Mobile Weather Unit
- Repeater
- Safety Zone
- Sling Site
- Spot Fire
- Staging Area
- Water Source
- Value at Risk
- Division Break
- Uncontrolled Fire Edge
- Contained Line
- Temporary Flight Restriction
- Wildfire Daily Fire Perimeter

IMT 3
10/7/2020 0603
Proj: NAD 1983 UTM Zone 12N

Contour Interval: 40'