

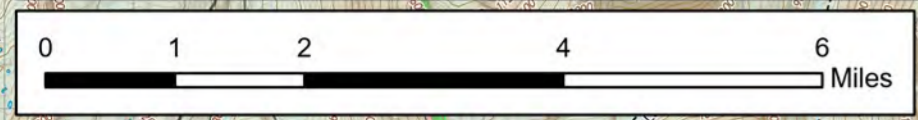


**OPERATIONS**

**East Fork**  
**UT-ASF-100340**  
**10/10/20**  
 80,535 acres  
 Acres from IR 10/09/2020 @ 2220

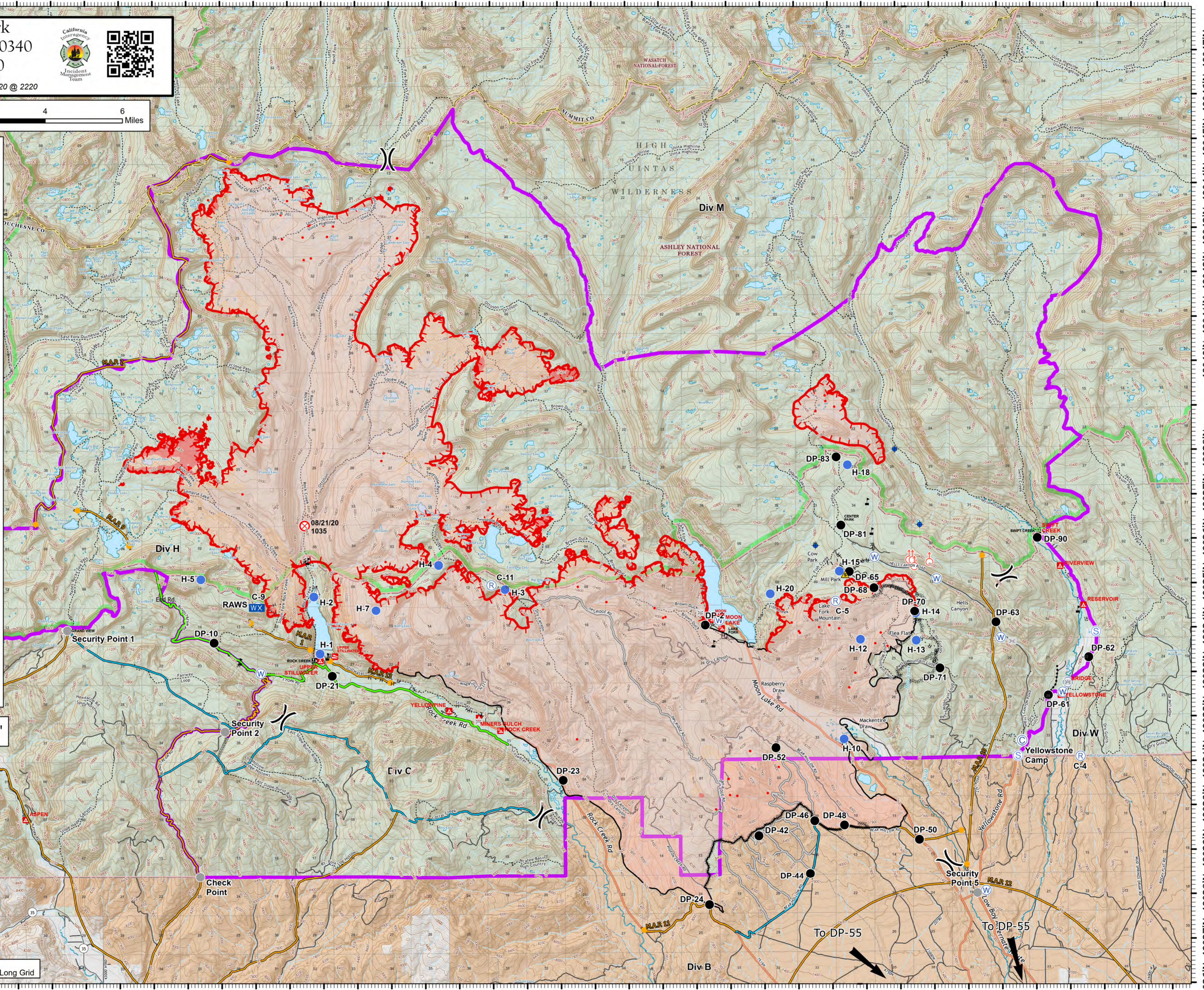




- Bridge
- Camp
- Dip Site
- Drop Point
- Fire Origin
- Helispot
- Mobile Weather Unit
- Repeater
- Safety Zone
- Sling Site
- Spot Fire
- Staging Area
- Water Source
- Value at Risk
- Other
- Division Break
- Primary
- Alternate
- Contingency
- Uncontrolled Fire Edge
- Contained Line
- Completed Dozer Line
- Completed Hand Line
- Road as Completed Line
- Access or Improved Road
- Proposed Burnout
- Planned Secondary Line
- Management Action Point
- Wildfire Daily Fire Perimeter
- IR Intense Heat
- IR Scattered Heat
- East Fork Fire Closure Area
- USFS Wilderness
- Tribal Lands
- US Forest Service (USFS)
- Private

Contour interval: 40'



10/10/2020 1454  
 North American 1983 Datum, LatLong Grid



40°27'N 40°28'N 40°29'N 40°30'N 40°31'N 40°32'N 40°33'N 40°34'N 40°35'N 40°36'N 40°37'N 40°38'N 40°39'N 40°40'N 40°41'N 40°42'N 40°43'N 40°44'N 40°45'N 40°46'N 40°47'N

110°55'W 110°53'W 110°51.01'W 110°49'W 110°47'W 110°45'W 110°43'W 110°41'W 110°39'W 110°37'W 110°35'W 110°33'W 110°31'W 110°29'W 110°27'W 110°25'W 110°23'W 110°21.01'W 110°19'W 110°17'W