

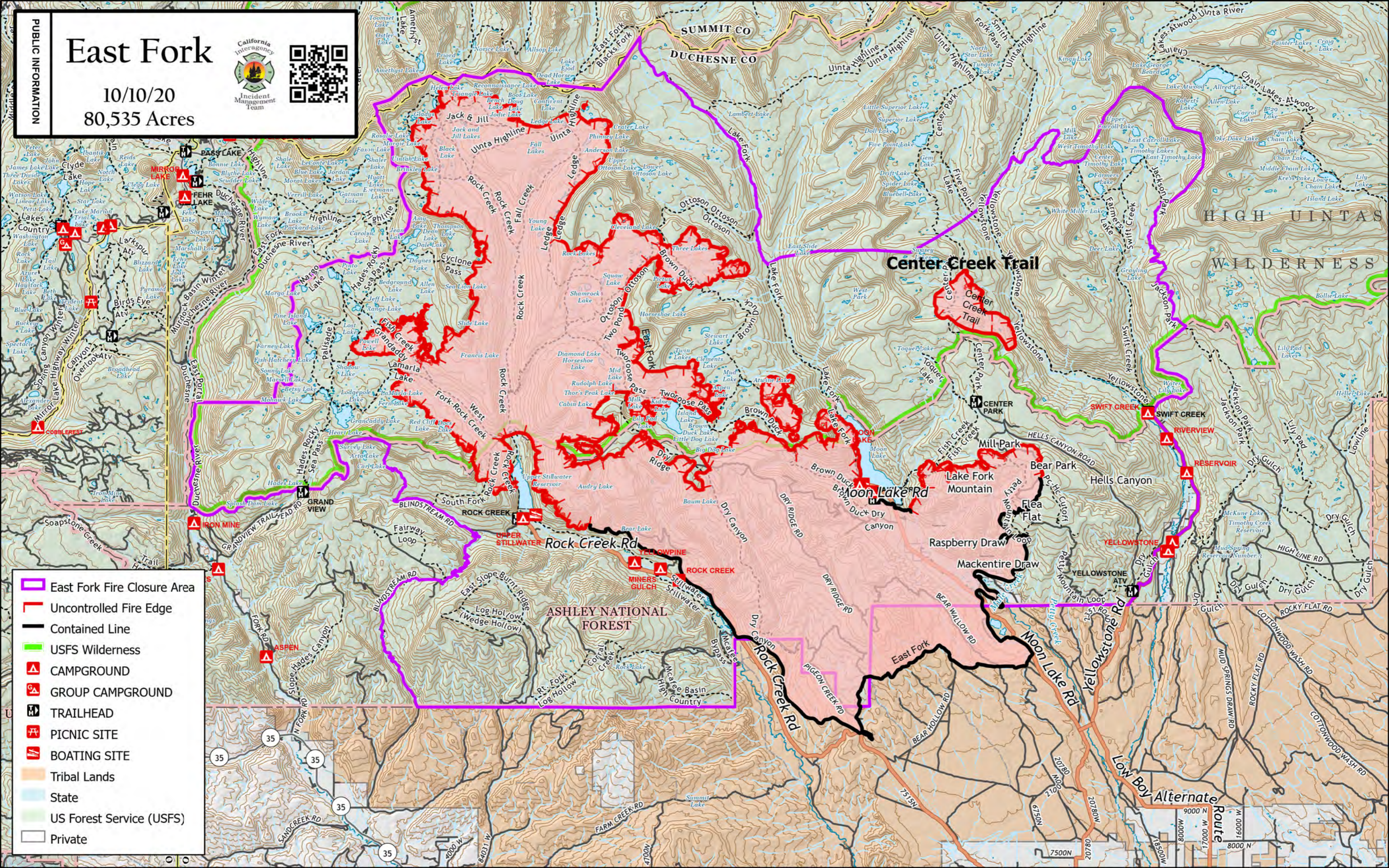


**PUBLIC INFORMATION**

# East Fork

10/10/20  
80,535 Acres

- East Fork Fire Closure Area
- Uncontrolled Fire Edge
- Contained Line
- USFS Wilderness
- ▲ CAMPGROUND
- ▲▲ GROUP CAMPGROUND
- H TRAILHEAD
- P PICNIC SITE
- B BOATING SITE
- Tribal Lands
- State
- US Forest Service (USFS)
- Private

