



East Fork
UT-ASF-100340
 10/11/20
 E Fork: 82,671 & Center Cr: 1,274 acres
 Acres from IR 10/10/2020 at 2057

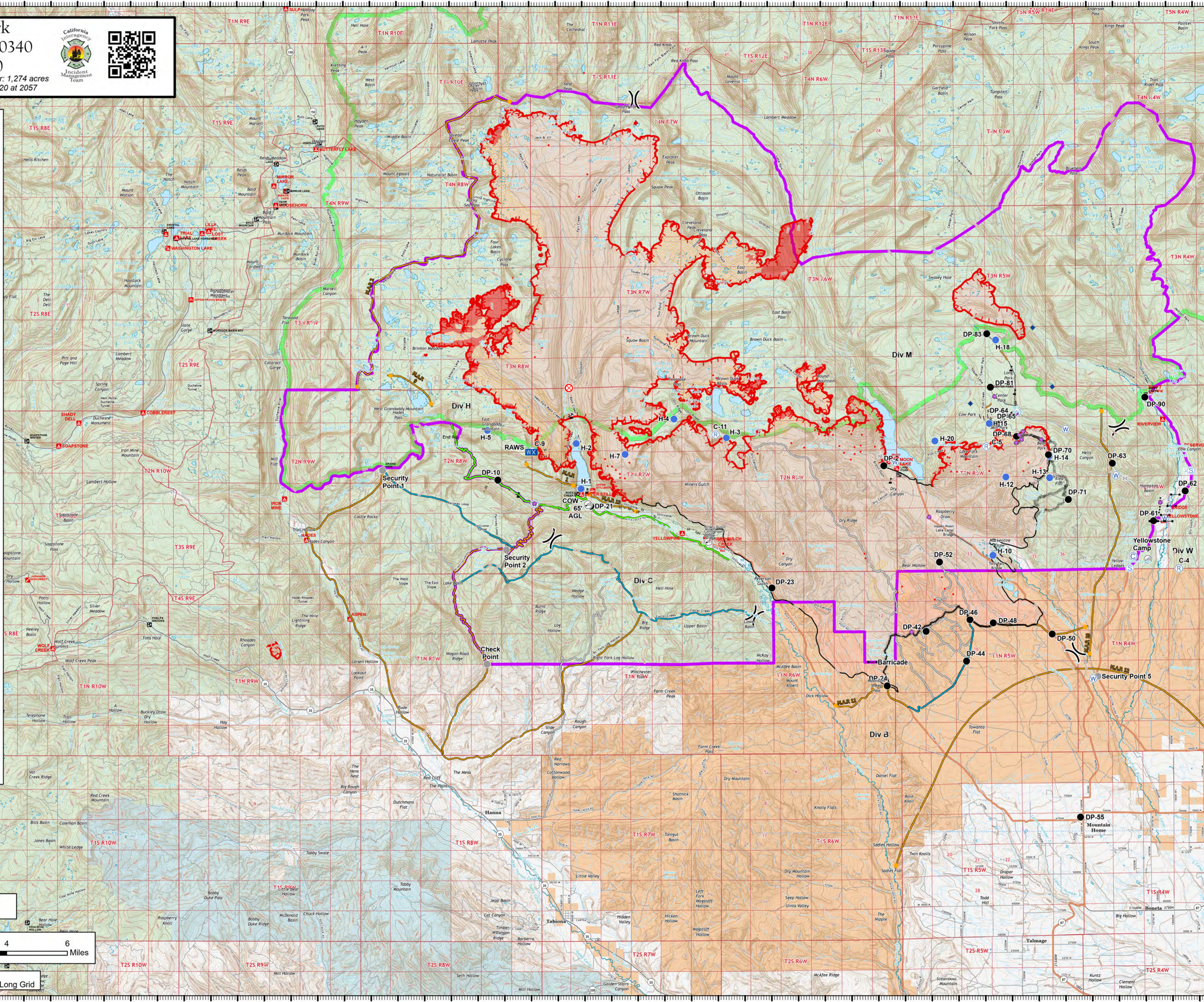
- OPERATIONS**
- Bridge
 - Camp
 - Dip Site
 - Drop Point
 - Fire Origin
 - Gate
 - Helispot
 - Internet Access
 - Mobile Weather Unit
 - Repair Point
 - Repeater
 - Safety Zone
 - Sling Site
 - Staging Area
 - Water Source
 - Value at Risk
 - Other
 - Division Break
 - Primary
 - Alternate
 - Contingency
 - Uncontrolled Fire Edge
 - Contained Line
 - Completed Dozer Line
 - Completed Hand Line
 - Road as Completed Line
 - Access or Improved Road
 - Proposed Burnout
 - Planned Secondary Line
 - Temporary Flight Restriction
 - Fence
 - Repair Line
 - Management Action Point
 - Other
 - Wildfire Daily Fire Perimeter
 - IR Intense Heat
 - IR Scattered Heat
 - East Fork Fire Closure Area
 - USFS Wilderness
 - Tribal
 - State
 - US Forest Service (USFS)
 - Private



Contour interval: 40'



10/11/2020 0854
 North American 1983 Datum, LatLong Grid



111°8'W 111°6.01'W 111°4'W 111°2'W 111°W 110°58'W 110°56'W 110°54'W 110°52'W 110°50'W 110°48'W 110°46'W 110°44'W 110°42'W 110°40'W 110°38'W 110°35'W 110°33'W 110°31'W 110°29'W 110°27'W 110°25'W 110°23'W 110°20'W