



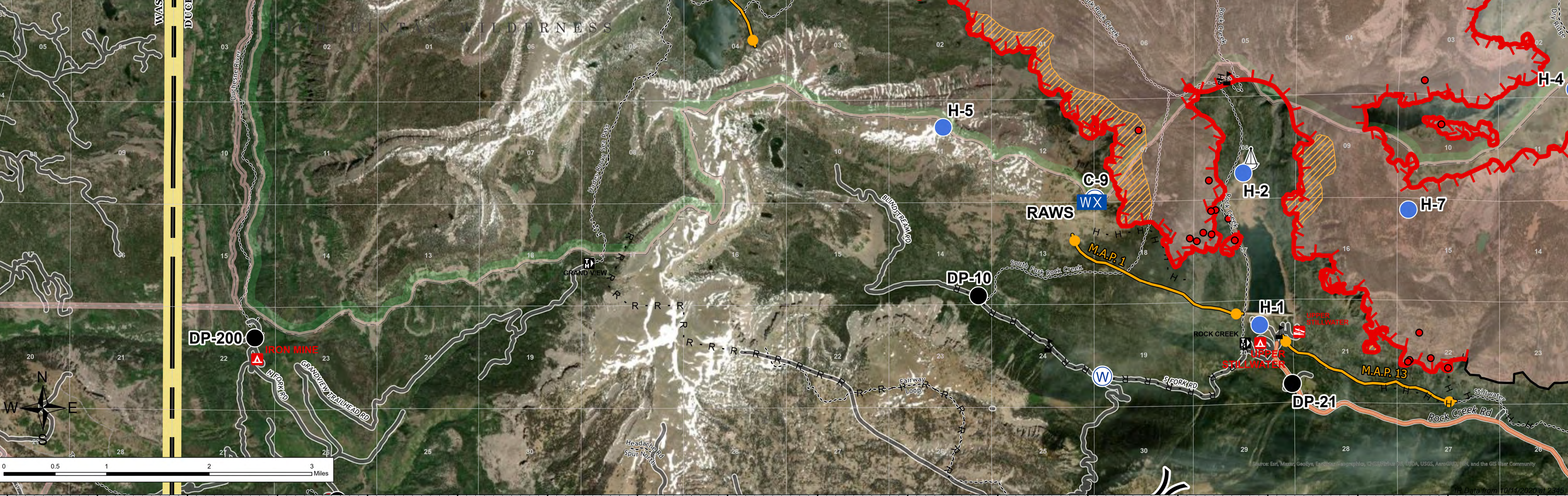


DIVISION H

East Fork
 UT-ASF-100340
 10/12/20
 E Fork: 83,000 &
 Center Cr: 1,274 Acres

- IR Isolated Heat
- Drop Point
- ⊗ Fire Origin
- Helispot
- WX Mobile Weather Unit
- R Repeater
-  Sling Site
- W Water Source
-  Value at Risk
-) Division Break
- Uncontrolled Fire Edge
- Contained Line
- Completed Hand Line
- Road as Completed Line
- Management Action Point
- Wildfire Daily Fire Perimeter
- IR Intense Heat
- IR Scattered Heat



Source: Esri, Maxar, GeoEye, Earthstar, GeoEye, IGN, AerGRID, NASA, USGS, AeroGRID, IGN, and the GIS User Community
 10 Data from 10/11/2020 at 23:45