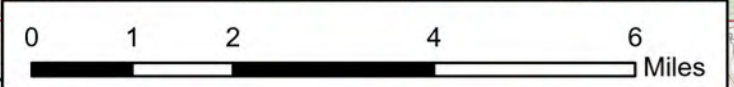


East Fork
UT-ASF-100340
 10/12/20
 E Fork: 83,000 & Center Cr: 1,274 acres
 Acres from IR 10/11/2020 at 2345

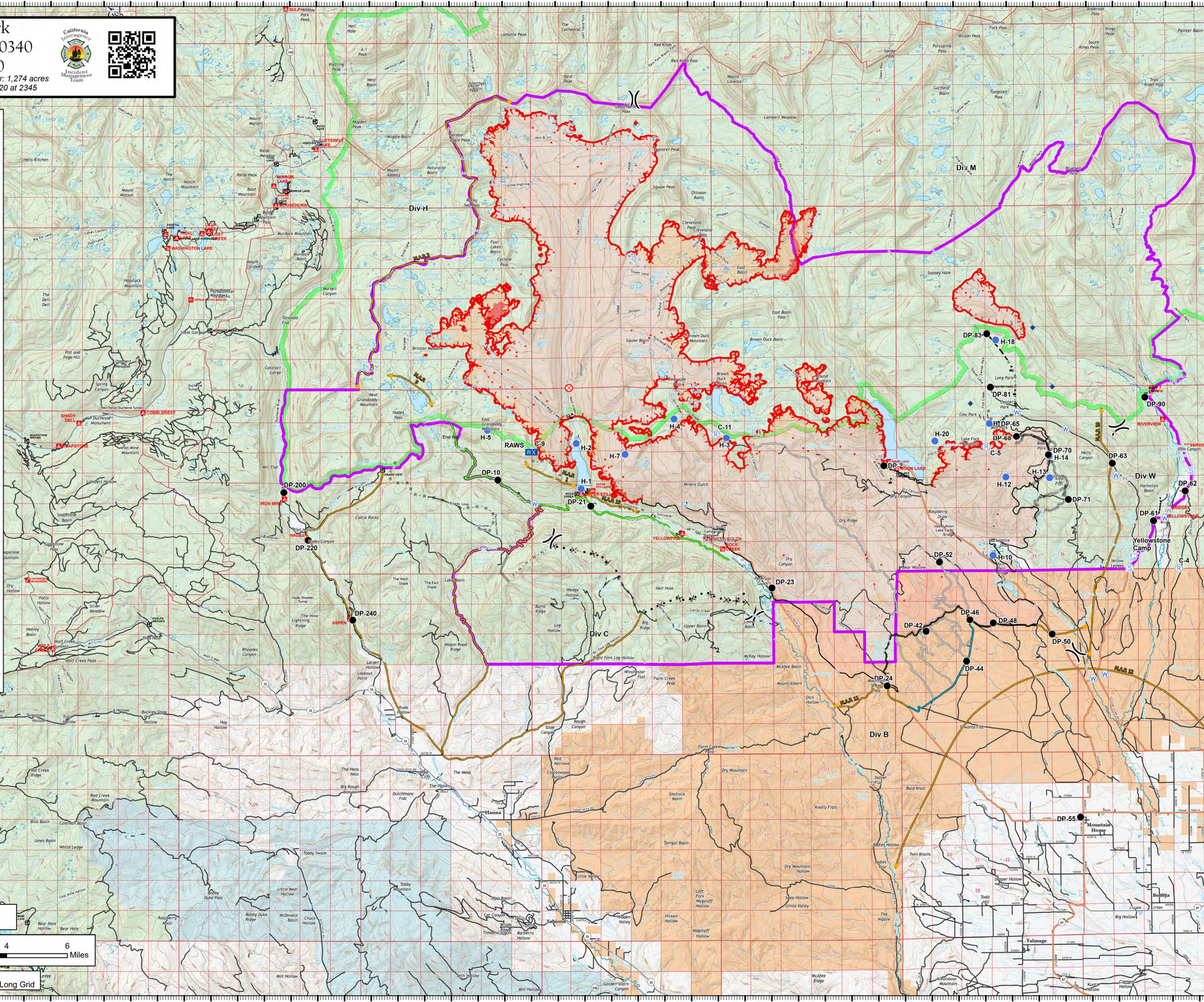
- OPERATIONS**
- Bridge
 - Camp
 - Dip Site
 - Drop Point
 - Fire Origin
 - Helispot
 - Mobile Weather Unit
 - Repeater
 - Safety Zone
 - Sling Site
 - Staging Area
 - Water Source
 - Value at Risk
 - Division Break
 - Primary
 - Alternate
 - Contingency
 - Uncontrolled Fire Edge
 - Contained Line
 - Completed Dozer Line
 - Completed Hand Line
 - Road as Completed Line
 - Access or Improved Road
 - Proposed Burnout
 - Proposed Dozer Line
 - Planned Fire Line
 - Planned Secondary Line
 - Management Action Point
 - Wildfire Daily Fire Perimeter
 - IR Intense Heat
 - IR Scattered Heat
 - East Fork Fire Closure Area
 - USFS Wilderness
 - Tribal
 - State
 - US Forest Service (USFS)
 - Private



Contour interval: 80'



10/12/2020 1242
 North American 1983 Datum, LatLong Grid



40°46'N
40°44'N
40°42'N
40°40'N
40°38'N
40°36'N
40°34'N
40°32'N
40°30'N
40°28'N
40°26'N
40°23.99'N
40°22'N
40°20'N

110°20'W
110°23'W
110°25'W
110°27'W
110°29'W
110°31'W
110°33'W
110°35'W
110°38'W
110°40'W
110°42'W
110°44'W
110°46'W
110°48'W
110°50'W
110°52'W
110°54'W
110°56'W
110°58'W
111°W
111°2'W
111°4'W
111°6.01'W
111°8'W