

110°55'W 110°50'W 110°45'W 110°40'W 110°35'W 110°30'W 110°25'W 110°20'W

REPAIR

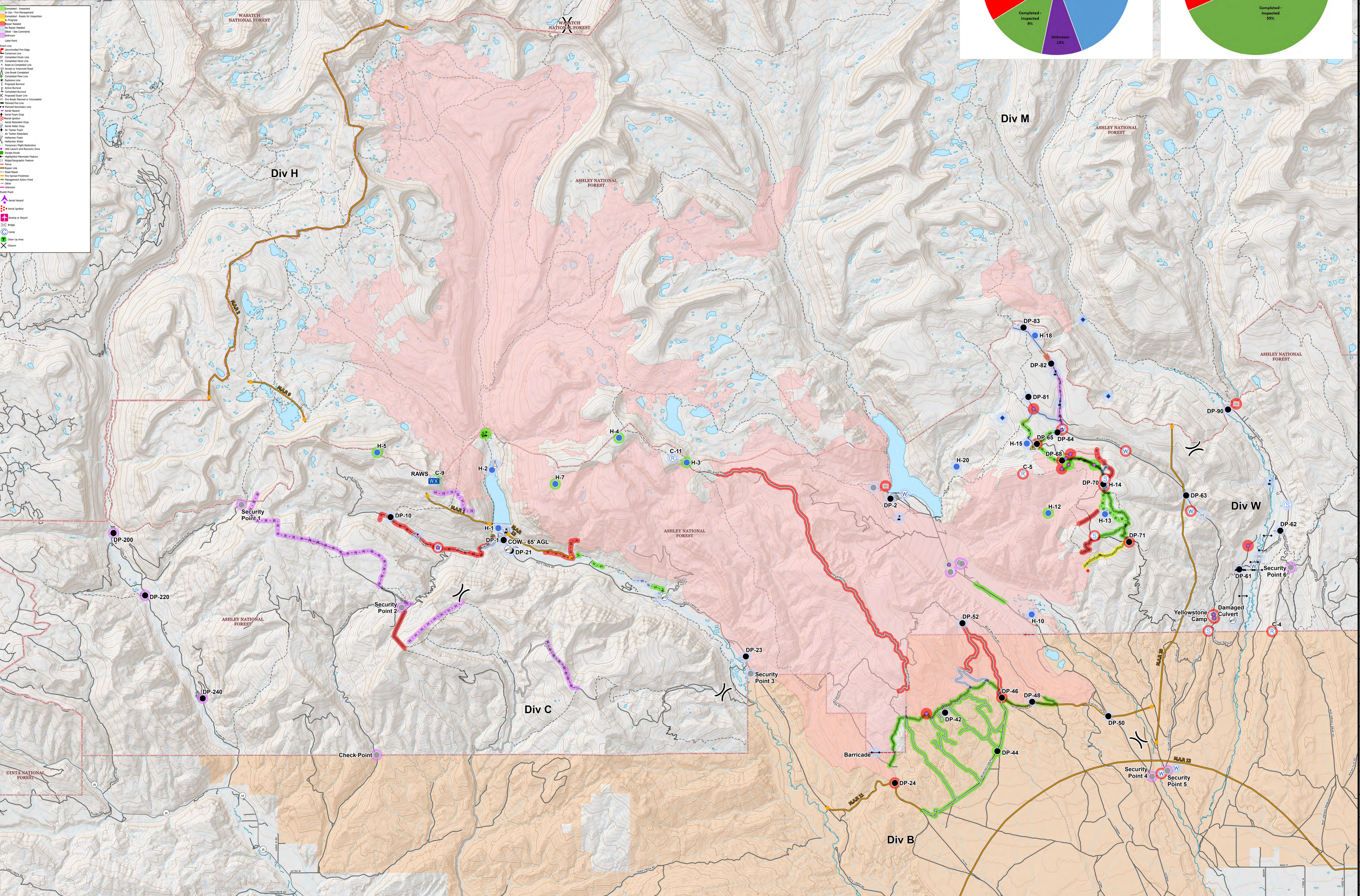
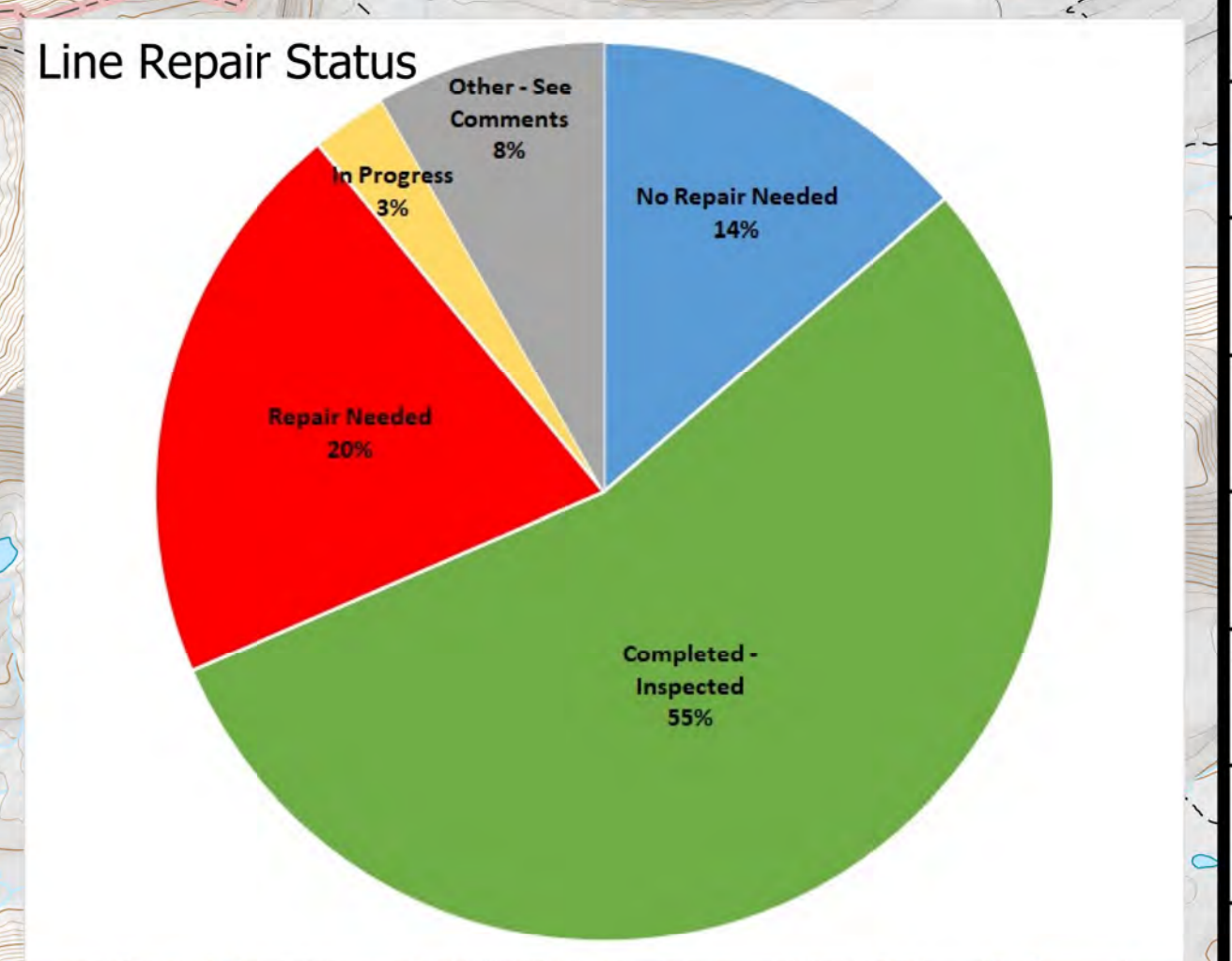
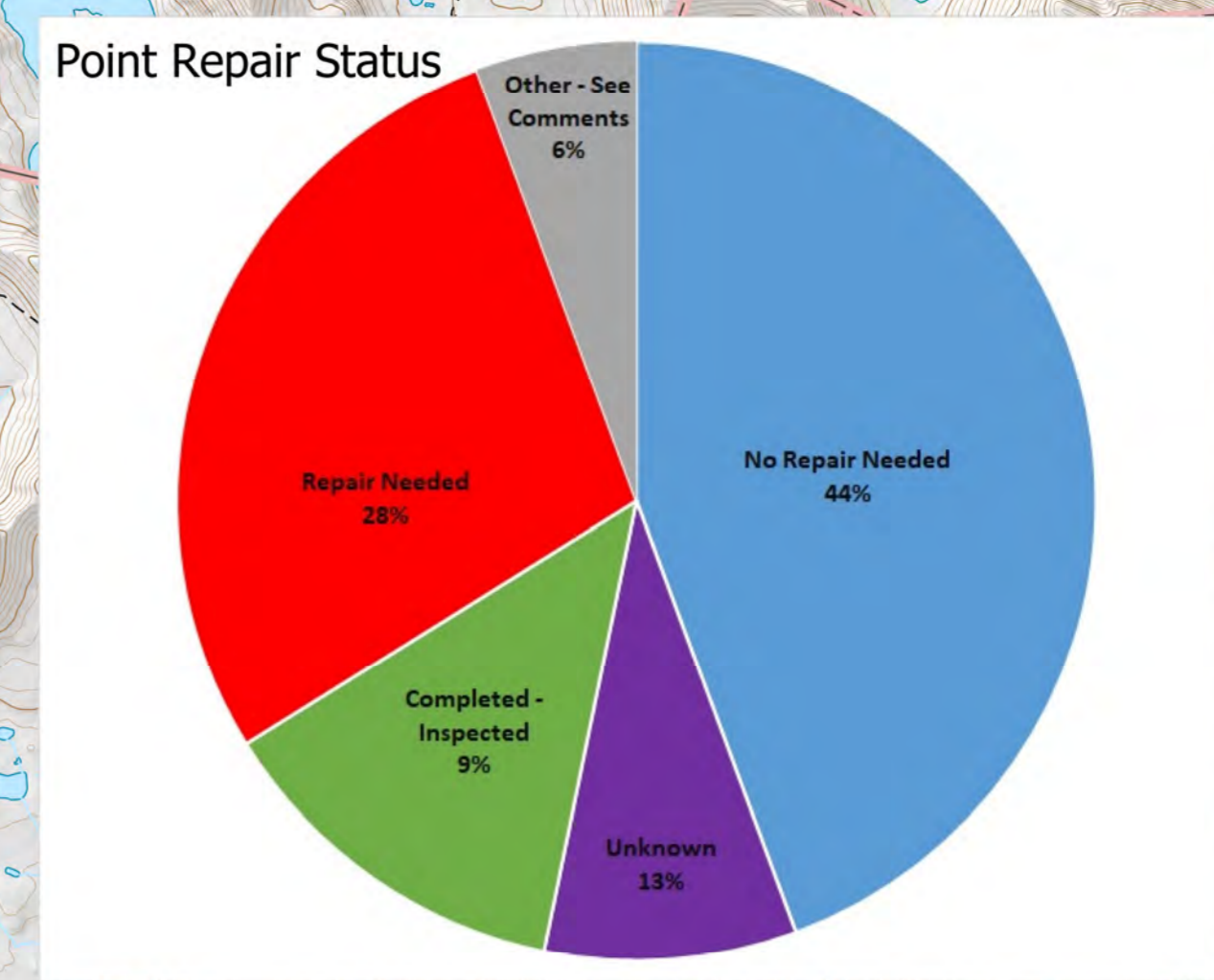
East Fork

UT-ASF-100340
10/12/20

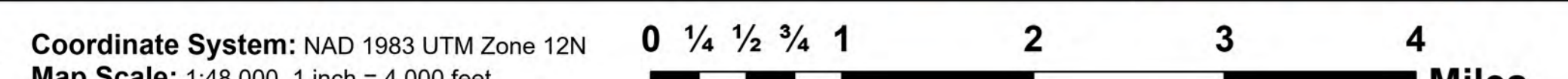
E Fork: 83,000 & Center Cr: 1,274 Acres




- Completed - Inspected
- In Use - Fire Management
- Completed - Ready for Inspection
- In Progress
- Repair Needed
- No Repair Needed
- Other - See Comments
- Unknown
- Label from



Coordinate System: NAD 1983 UTM Zone 12N
Map Scale: 1:48,000, 1 inch = 4,000 feet



10/12/2020 1242 HRS