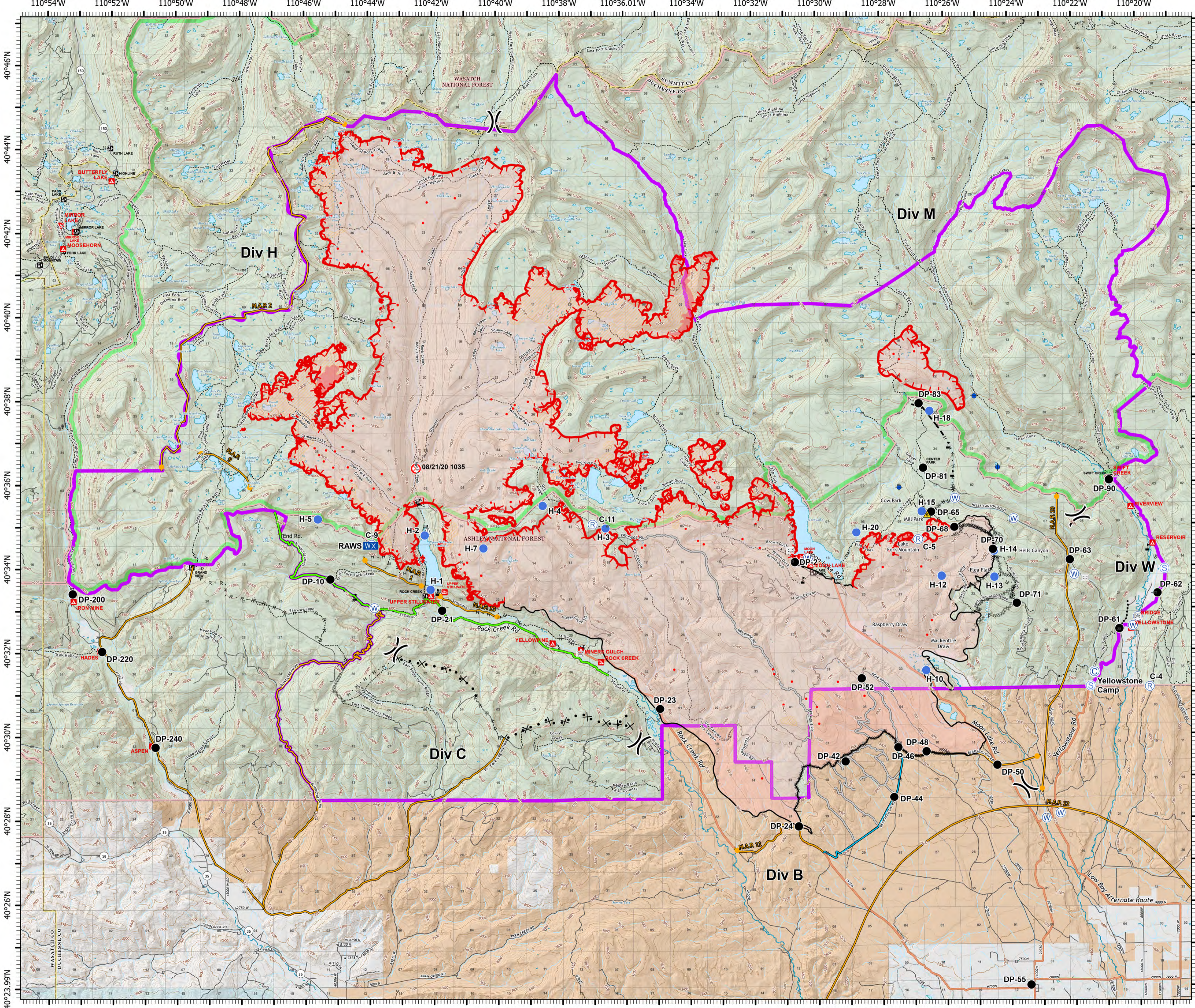


East Fork UT-ASF-100340 10/12/20

E Fork: 83,000 & Center Cr: 1,274 acres
Acres from IR 10/11/2020 at 2345



- Bridge
- Camp
- Dip Site
- Drop Point
- Fire Origin
- Helispot
- Mobile Weather Unit
- Repeater
- Safety Zone
- Sling Site
- Staging Area
- Water Source
- Value at Risk
- Division Break
- Primary
- Alternate
- Contingency
- Uncontrolled Fire Edge
- Contained Line
- Completed Dozer Line
- Completed Hand Line
- Road as Completed Line
- Access or Improved Road
- Proposed Burnout
- Proposed Dozer Line
- Planned Fire Line
- Planned Secondary Line
- Management Action Point
- Wildfire Daily Fire Perimeter
- IR Intense Heat
- IR Scattered Heat
- East Fork Fire Closure Area
- USFS Wilderness
- Tribal Lands
- State
- US Forest Service (USFS)
- Private



Contour interval: 80'

