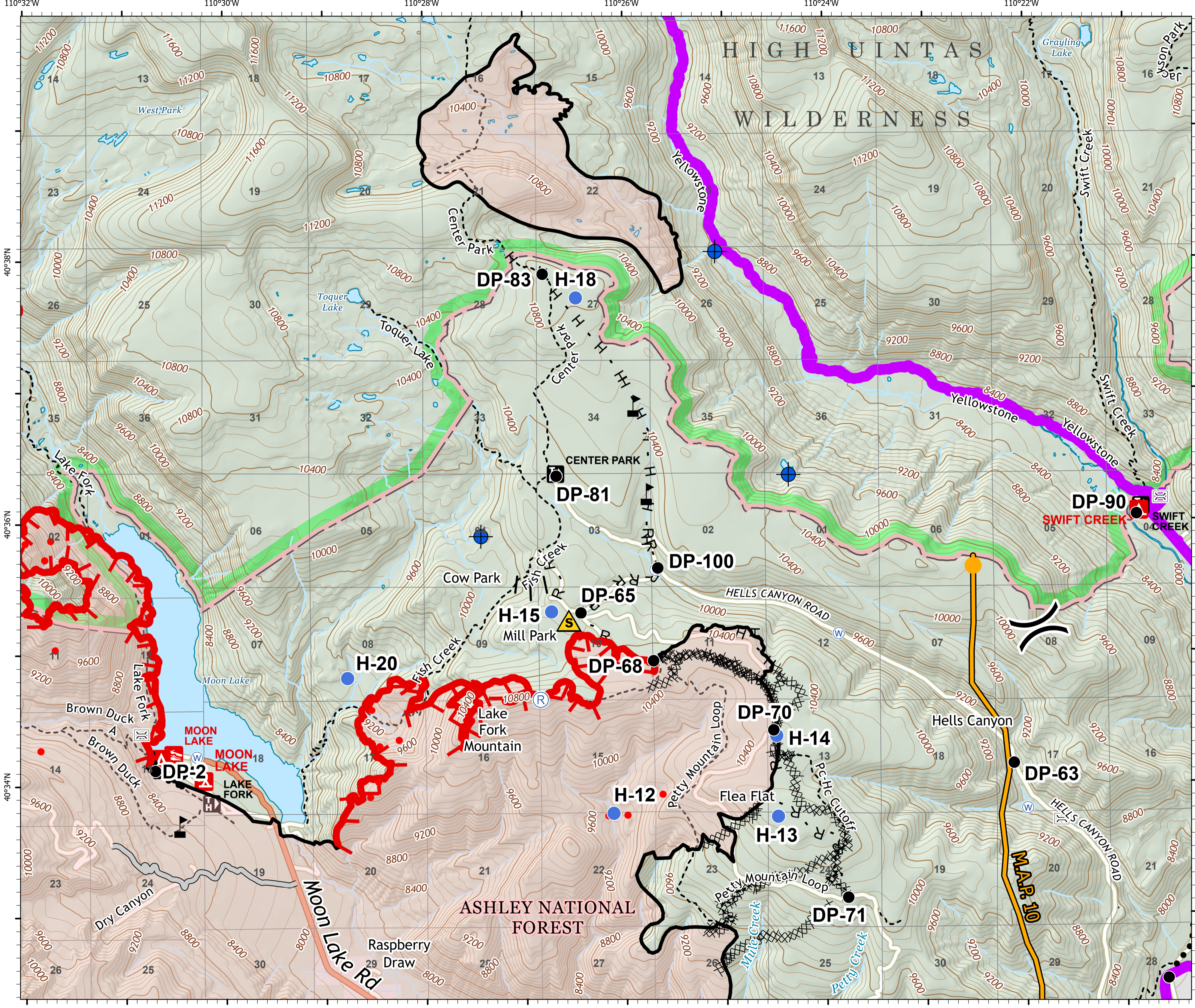




- Bridge
- Dip Site
- Drop Point
- Helispot
- Repeater
- Safety Zone
- Water Source
- Value at Risk
- Division Break
- Uncontrolled Fire Edge
- Contained Line
- Completed Dozer Line
- Completed Hand Line
- Road as Completed Line
- Access or Improved Road
- Proposed Burnout
- Planned Secondary Line
- Management Action Point
- Wildfire Daily Fire Perimeter
- East Fork Fire Closure Area
- USFS Wilderness
- US Forest Service (USFS)
- Private



Contour interval: 40'