

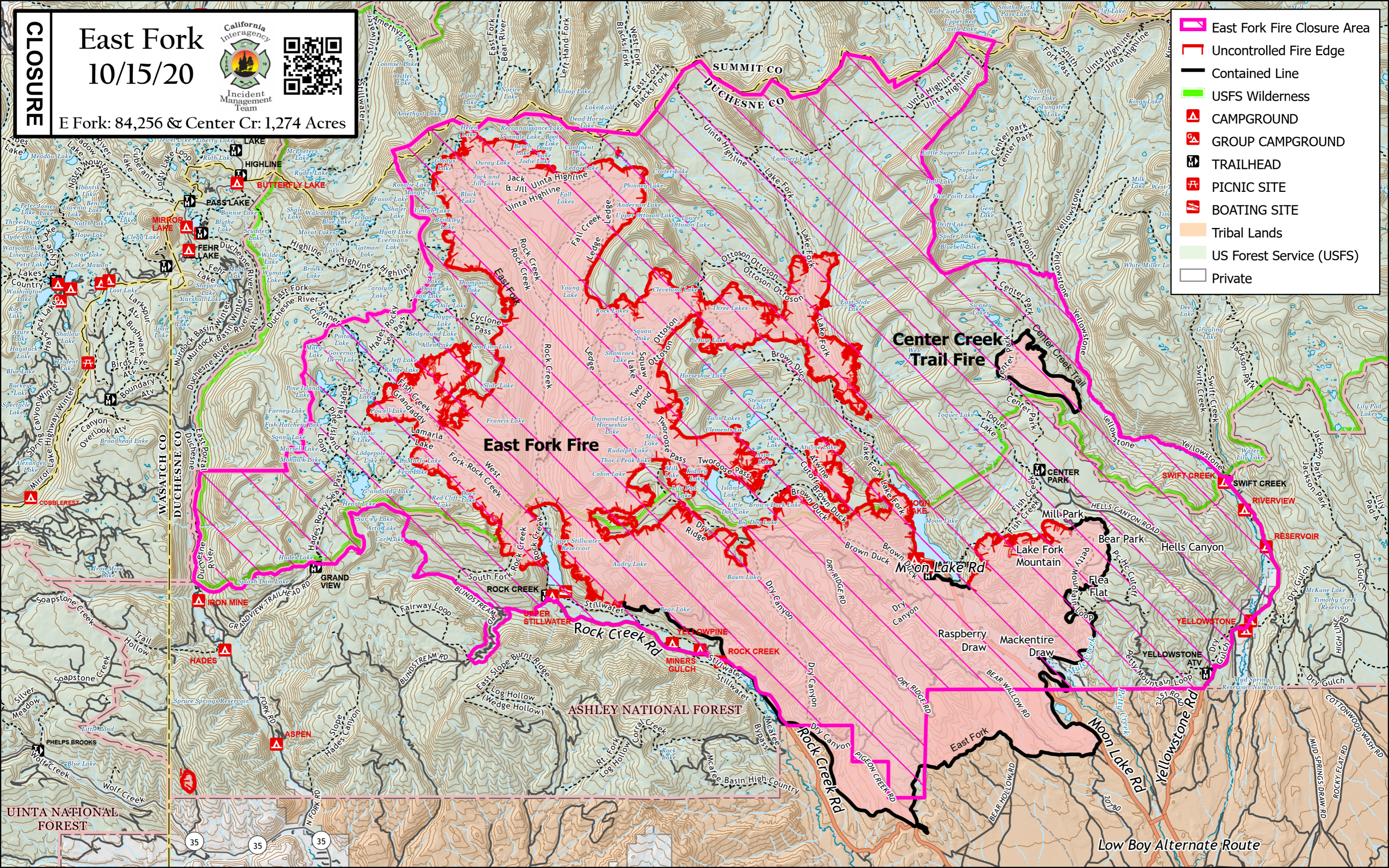
CLOSURE

East Fork 10/15/20

E Fork: 84,256 & Center Cr: 1,274 Acres



- East Fork Fire Closure Area
- Uncontrolled Fire Edge
- Contained Line
- USFS Wilderness
- CAMPGROUND
- GROUP CAMPGROUND
- TRAILHEAD
- PICNIC SITE
- BOATING SITE
- Tribal Lands
- US Forest Service (USFS)
- Private



UINTA NATIONAL FOREST

ASHLEY NATIONAL FOREST

Low Boy Alternate Route