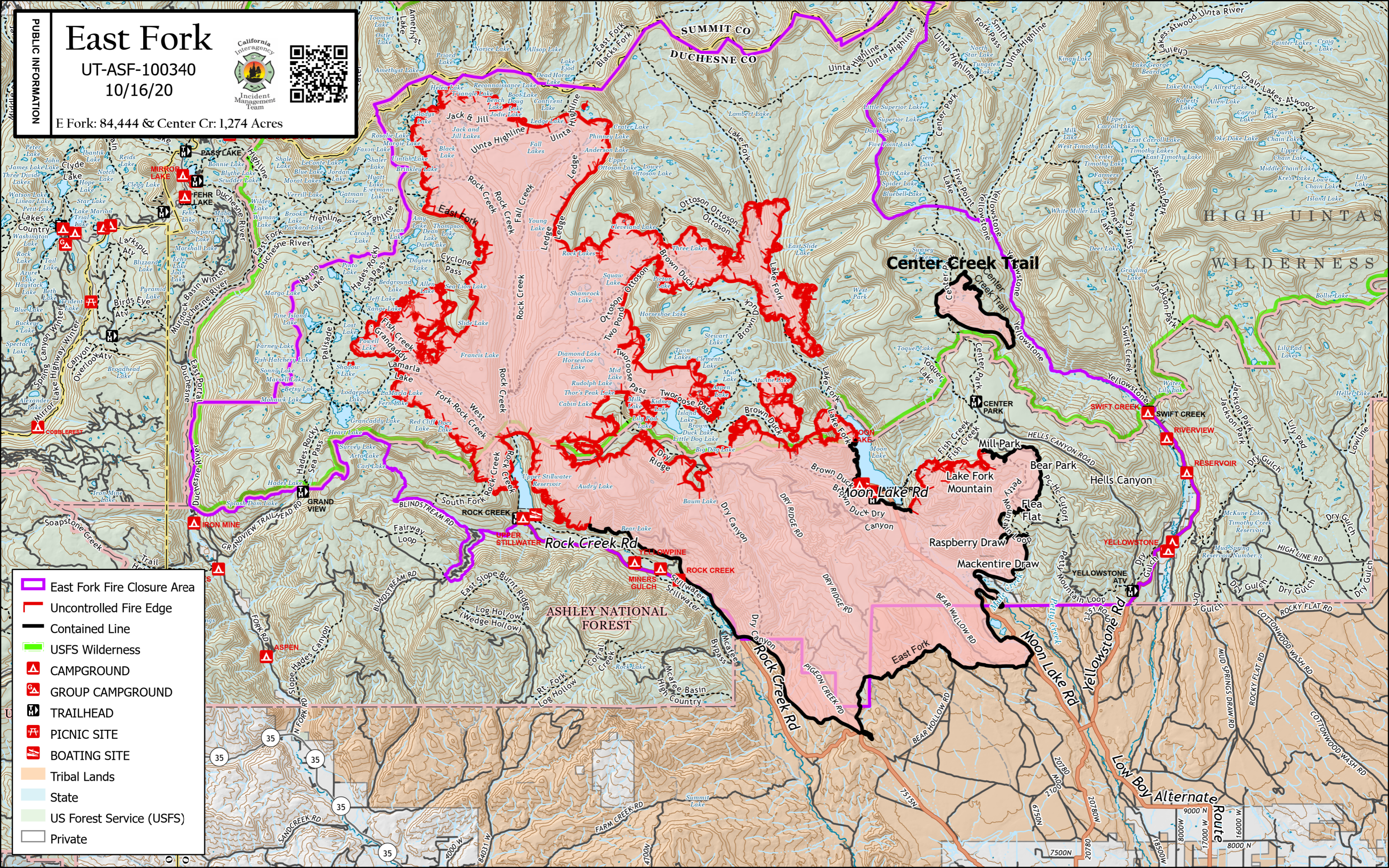


East Fork

UT-ASF-100340
10/16/20



E Fork: 84,444 & Center Cr: 1,274 Acres



- East Fork Fire Closure Area
- Uncontrolled Fire Edge
- Contained Line
- USFS Wilderness
- CAMPGROUND
- GROUP CAMPGROUND
- TRAILHEAD
- PICNIC SITE
- BOATING SITE
- Tribal Lands
- State
- US Forest Service (USFS)
- Private