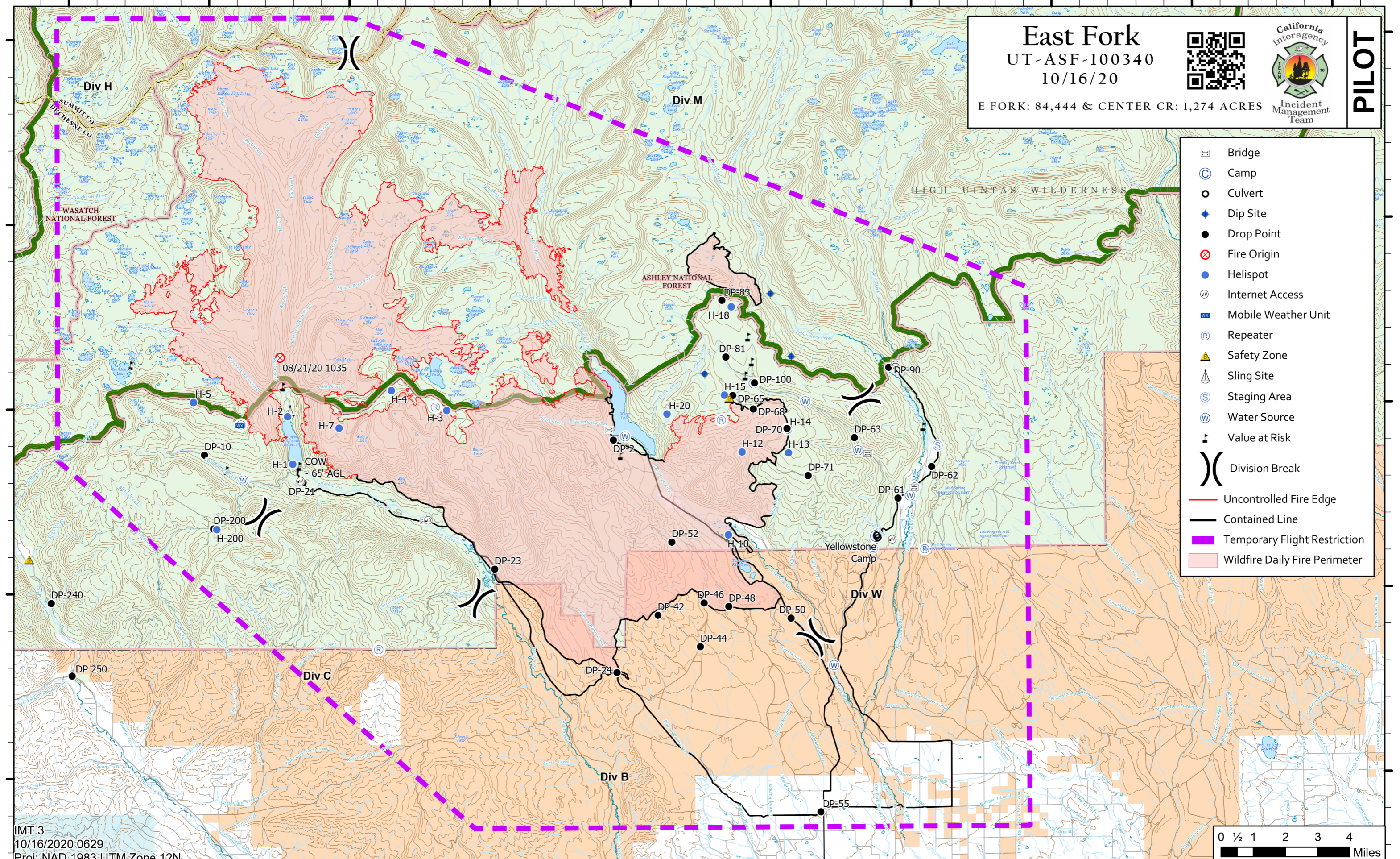


110°50'W 110°45'W 110°40'W 110°35'W 110°30'W 110°25'W 110°20'W 110°15'W 110°10'W 110°5'W



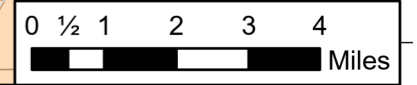
East Fork
 UT-ASF-100340
 10/16/20




PILOT

E FORK: 84,444 & CENTER CR: 1,274 ACRES

IMT 3
10/16/2020 0629
Proj: NAD 1983 UTM Zone 12N



110°50'W 110°45'W 110°40'W 110°35'W 110°30'W 110°25'W 110°20'W 110°15'W 110°10'W 110°5'W

40°45'N
40°40'N
40°35'N
40°30'N
40°25'N

40°45'N
40°40'N
40°35'N
40°30'N
40°25'N