

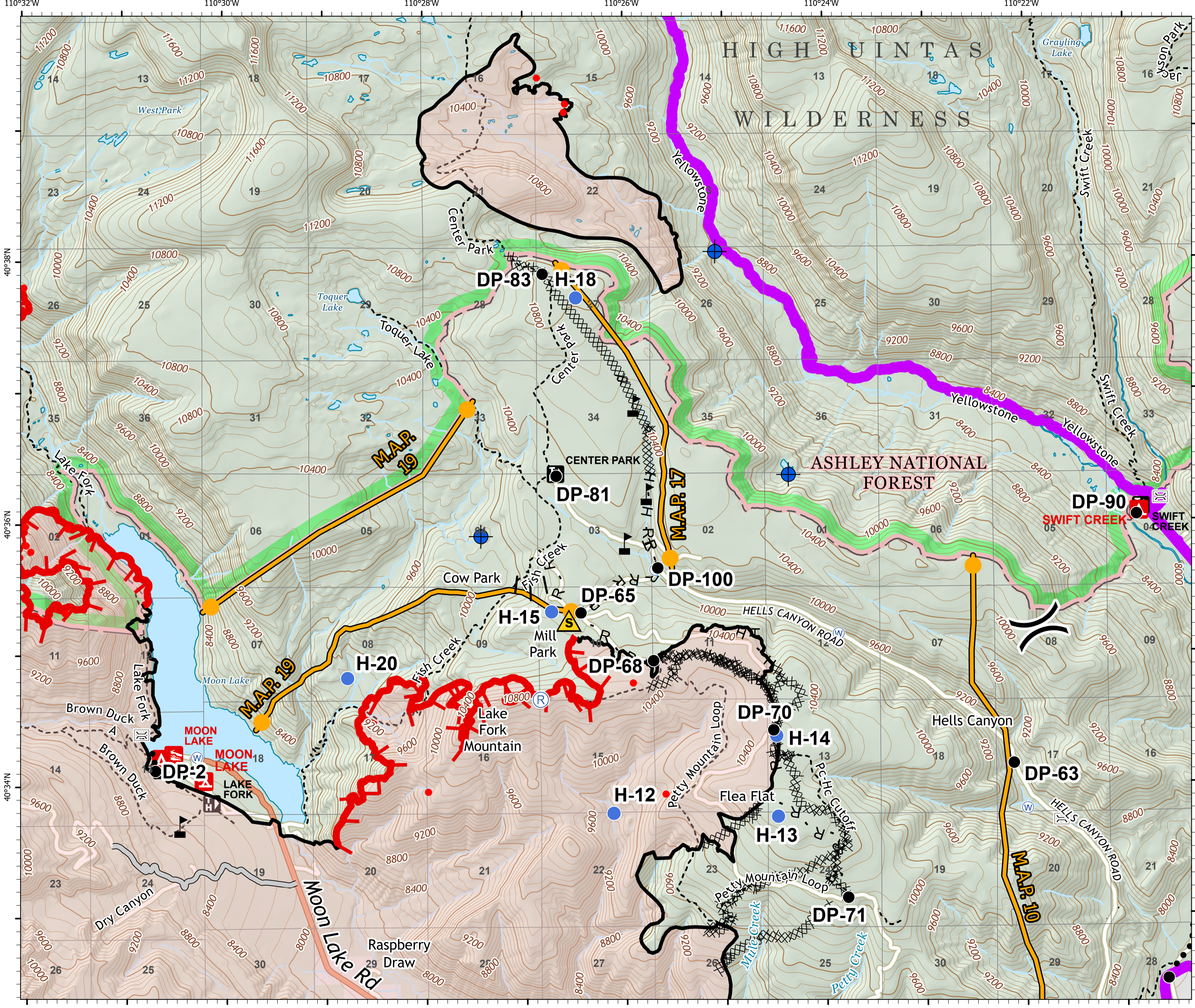
WOODM/ZOOM

East Fork UT-ASF-100340 10/17/20

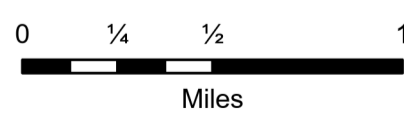
E Fork: 84,676 & Center Cr: 1,274 acres
Acres from IR 10/17/2020 at 0106



- Bridge
- Dip Site
- Drop Point
- Helispot
- Repeater
- Safety Zone
- Water Source
- Value at Risk
- Division Break
- Uncontrolled Fire Edge
- Contained Line
- Completed Dozer Line
- Completed Hand Line
- Road as Completed Line
- Access or Improved Road
- Proposed Burnout
- Planned Secondary Line
- Management Action Point
- Wildfire Daily Fire Perimeter
- East Fork Fire Closure Area
- USFS Wilderness
- US Forest Service (USFS)
- Private



Contour interval: 40'



110°32'W 110°30'W 110°28'W 110°26'W 110°24'W 110°22'W

40°38'N 40°36'N 40°34'N 40°32'N