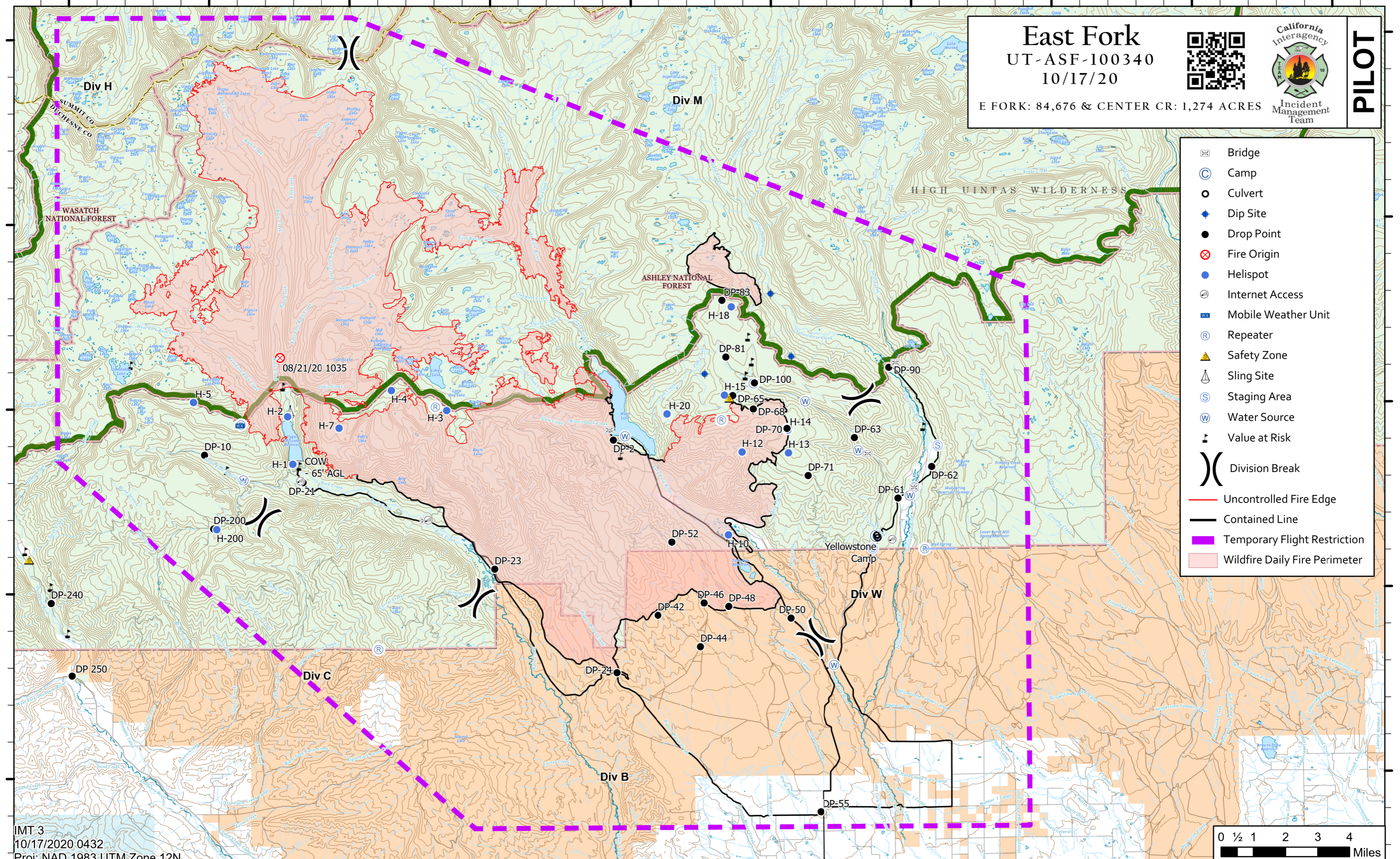


110°50'W 110°45'W 110°40'W 110°35'W 110°30'W 110°25'W 110°20'W 110°15'W 110°10'W 110°5'W



East Fork
 UT-ASF-100340
 10/17/20




PILOT

E FORK: 84,676 & CENTER CR: 1,274 ACRES

110°50'W 110°45'W 110°40'W 110°35'W 110°30'W 110°25'W 110°20'W 110°15'W 110°10'W 110°5'W

IMT 3
10/17/2020 0432
Proj: NAD 1983 UTM Zone 12N

