

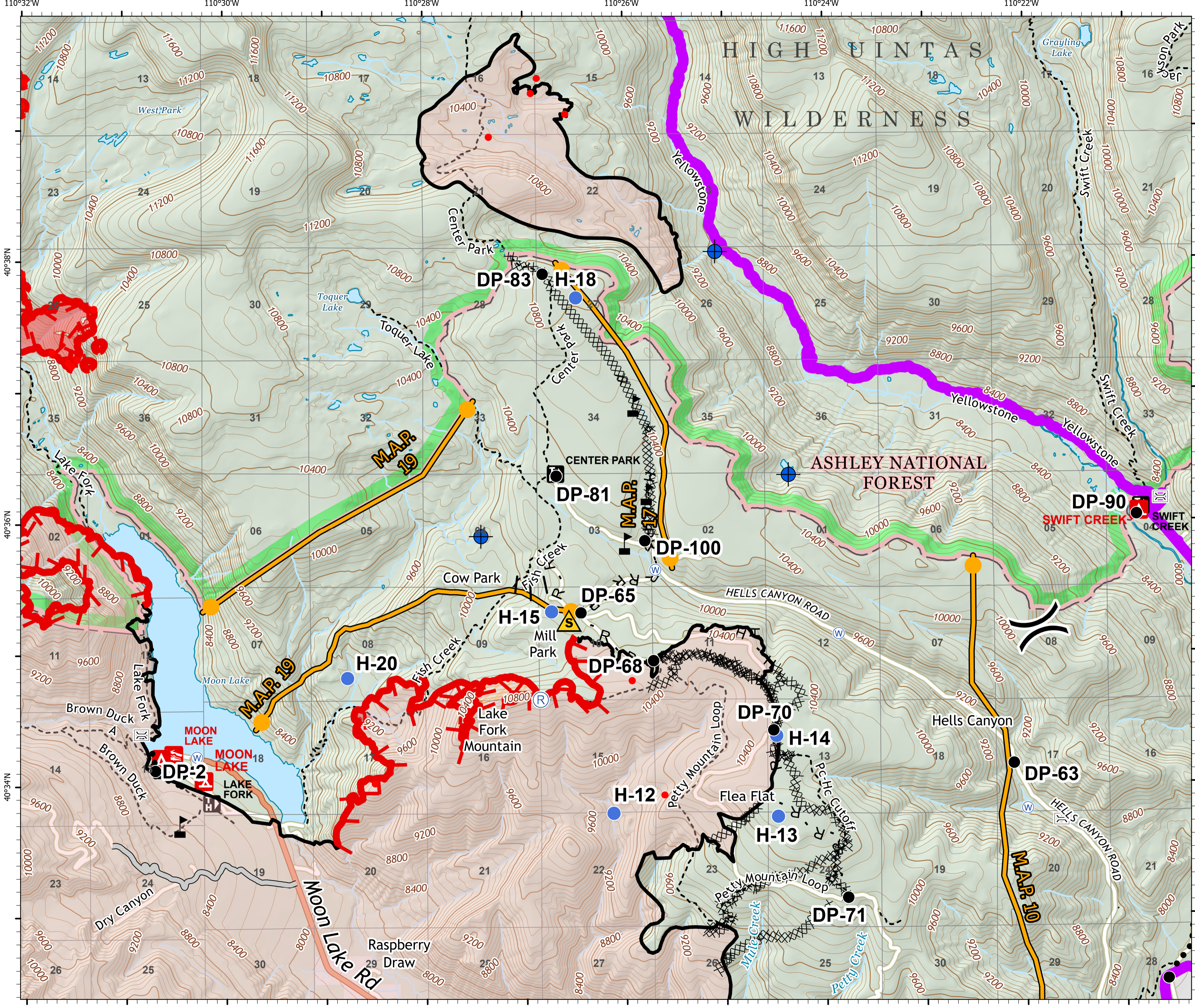
W0000000

# East Fork UT-ASF-100340 10/18/20

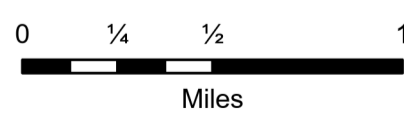
East Fork: 85,232 & Center Cr: 1,274 acres  
Acres from IR 10/18/2020 at 0038



- Bridge
- Dip Site
- Drop Point
- Helispot
- Repeater
- Safety Zone
- Water Source
- Value at Risk
- Division Break
- Uncontrolled Fire Edge
- Contained Line
- Completed Dozer Line
- Completed Hand Line
- Road as Completed Line
- Access or Improved Road
- Proposed Burnout
- Planned Secondary Line
- Management Action Point
- Wildfire Daily Fire Perimeter
- IR Intense Heat
- IR Scattered Heat
- East Fork Fire Closure Area
- USFS Wilderness
- US Forest Service (USFS) Private



Contour interval: 40'



110°32'W 110°30'W 110°28'W 110°26'W 110°24'W 110°22'W

40°38'N 40°36'N 40°34'N