

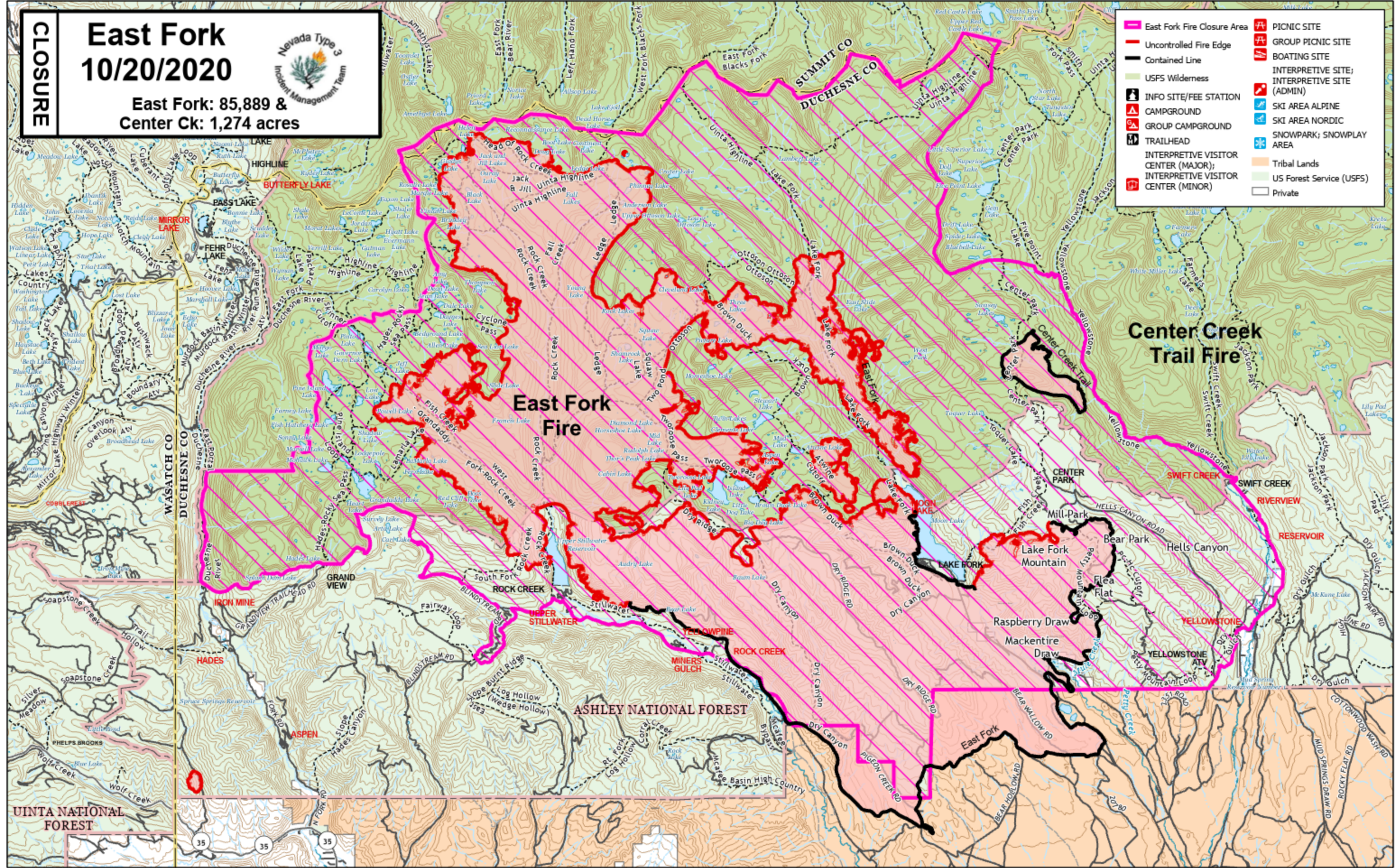
CLOSURE

East Fork 10/20/2020

East Fork: 85,889 &
Center Ck: 1,274 acres



	East Fork Fire Closure Area		PICNIC SITE
	Uncontrolled Fire Edge		GROUP PICNIC SITE
	Contained Line		BOATING SITE
	USFS Wilderness		INTERPRETIVE SITE; INTERPRETIVE SITE (ADMIN)
	INFO SITE/FEE STATION		SKI AREA ALPINE
	CAMPGROUND		SKI AREA NORDIC
	GROUP CAMPGROUND		SNOWPARK; SNOWPLAY AREA
	TRAILHEAD		Tribal Lands
	INTERPRETIVE VISITOR CENTER (MAJOR);		US Forest Service (USFS)
	INTERPRETIVE VISITOR CENTER (MINOR)		Private



Center Creek Trail Fire

East Fork Fire

ASHLEY NATIONAL FOREST

UINTA NATIONAL FOREST

35 35 35