

PUBLIC INFORMATION

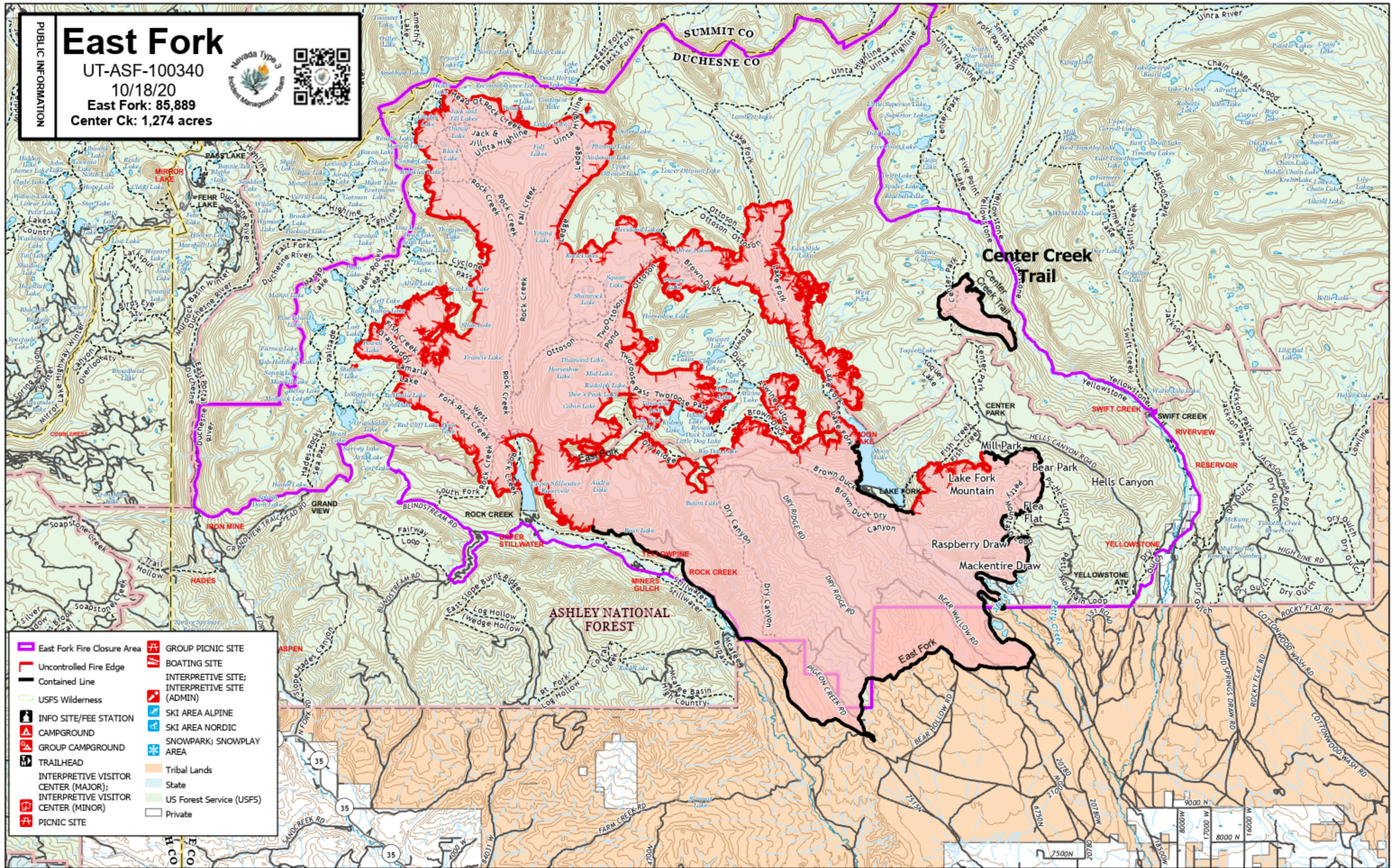
East Fork

UT-ASF-100340

10/18/20

East Fork: 85,889

Center Ck: 1,274 acres



- | | |
|--|--|
| East Fork Fire Closure Area | GROUP PICNIC SITE |
| Uncontrolled Fire Edge | BOATING SITE |
| Contained Line | INTERPRETIVE SITE; INTERPRETIVE SITE (ADMIN) |
| USFS Wilderness | SKI AREA ALPINE |
| INFO SITE/FEE STATION | SKI AREA NORDIC |
| CAMPGROUND | SNOWPARK; SNOWPLAY AREA |
| GROUP CAMPGROUND | Tribal Lands |
| TRAILHEAD | State |
| INTERPRETIVE VISITOR CENTER (MAJOR); INTERPRETIVE VISITOR CENTER (MINOR) | US Forest Service (USFS) |
| PICNIC SITE | Private |