

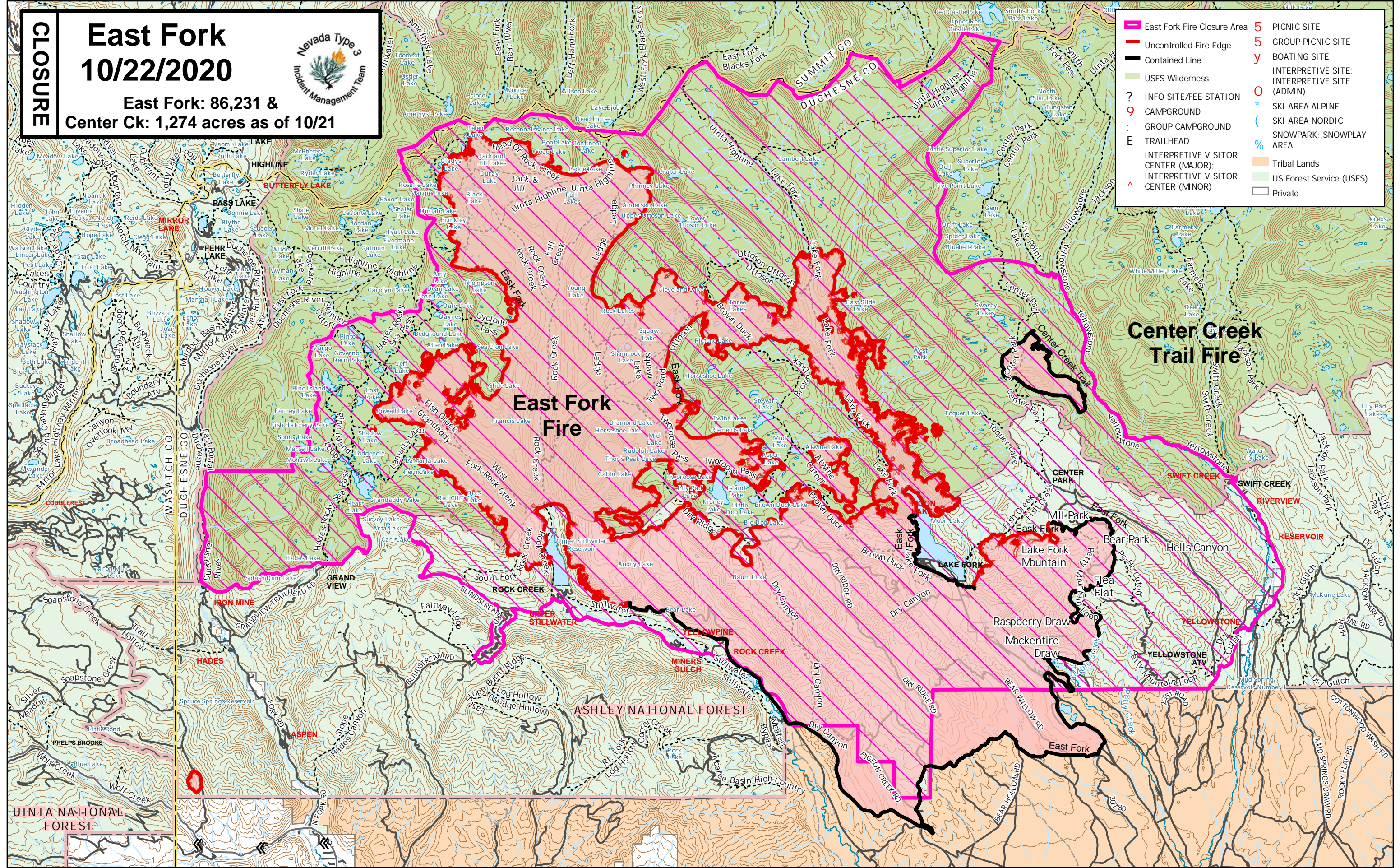
CLOSURE

East Fork 10/22/2020

East Fork: 86,231 &
Center Ck: 1,274 acres as of 10/21



	East Fork Fire Closure Area		PICNIC SITE
	Uncontrolled Fire Edge		GROUP PICNIC SITE
	Contained Line		BOATING SITE
	USFS Wilderness		INTERPRETIVE SITE; INTERPRETIVE SITE (ADMIN)
	INFO SITE/FEE STATION		SKI AREA ALPINE
	CAMPGROUND		SKI AREA NORDIC
	GROUP CAMPGROUND		SNOWPARK; SNOWPLAY AREA
	TRAILHEAD		Tribal Lands
	INTERPRETIVE VISITOR CENTER (MAJOR)		US Forest Service (USFS)
	INTERPRETIVE VISITOR CENTER (MINOR)		Private



East Fork Fire

Center Creek Trail Fire

ASHLEY NATIONAL FOREST

UINTA NATIONAL FOREST