

PUBLIC INFORMATION

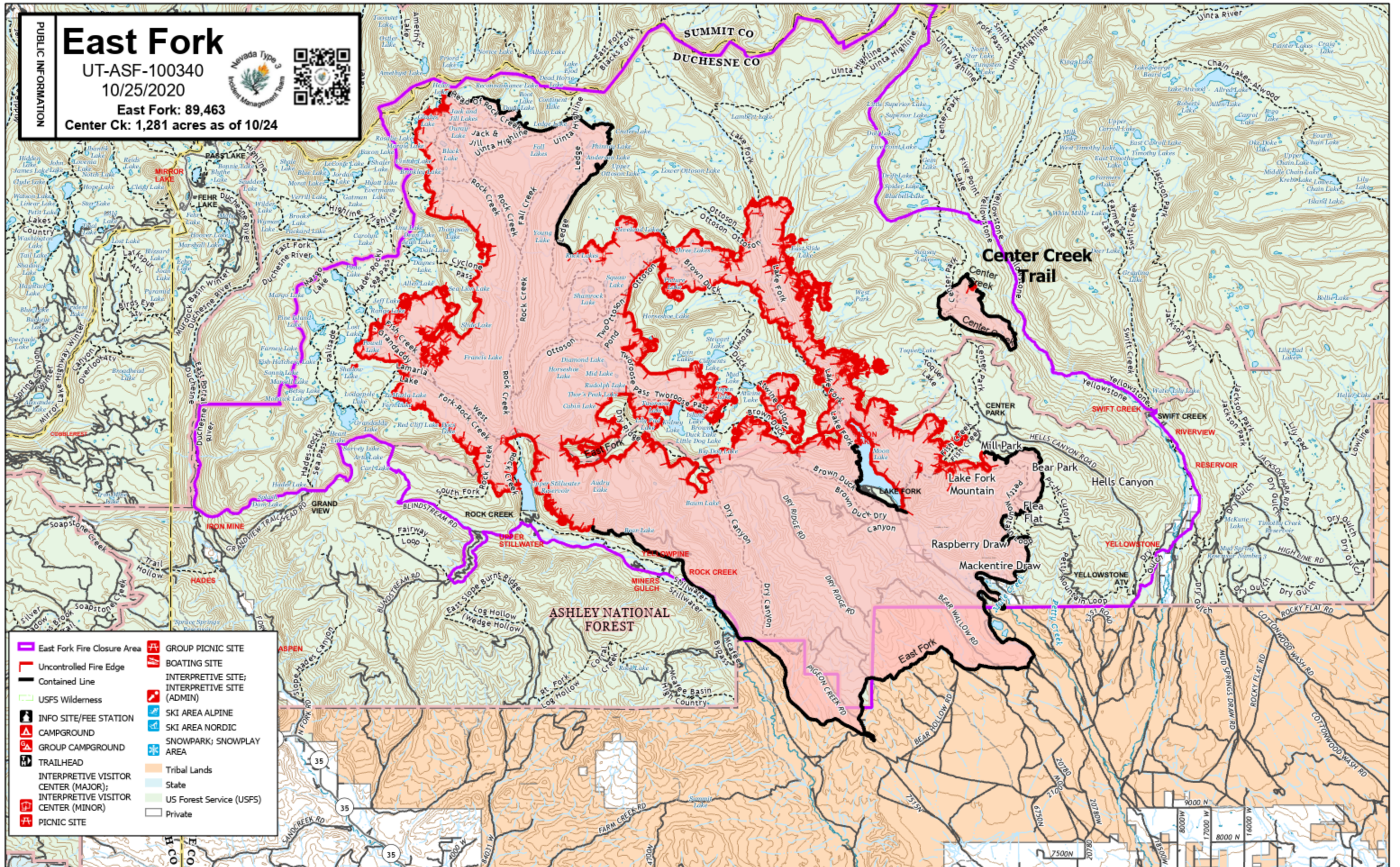
# East Fork

UT-ASF-100340

10/25/2020

East Fork: 89,463

Center Ck: 1,281 acres as of 10/24



- East Fork Fire Closure Area
- Uncontrolled Fire Edge
- Contained Line
- USFS Wilderness
- INFO SITE/FEE STATION
- CAMPGROUND
- GROUP CAMPGROUND
- TRAILHEAD
- INTERPRETIVE VISITOR CENTER (MAJOR);
- INTERPRETIVE VISITOR CENTER (MINOR)
- PICNIC SITE
- GROUP PICNIC SITE
- BOATING SITE
- INTERPRETIVE SITE; INTERPRETIVE SITE (ADMIN)
- SKI AREA ALPINE
- SKI AREA NORDIC
- SNOWPARK; SNOWPLAY AREA
- Tribal Lands
- State
- US Forest Service (USFS)
- Private