

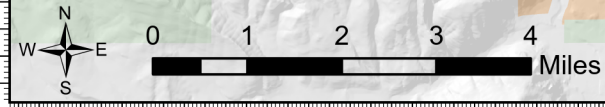
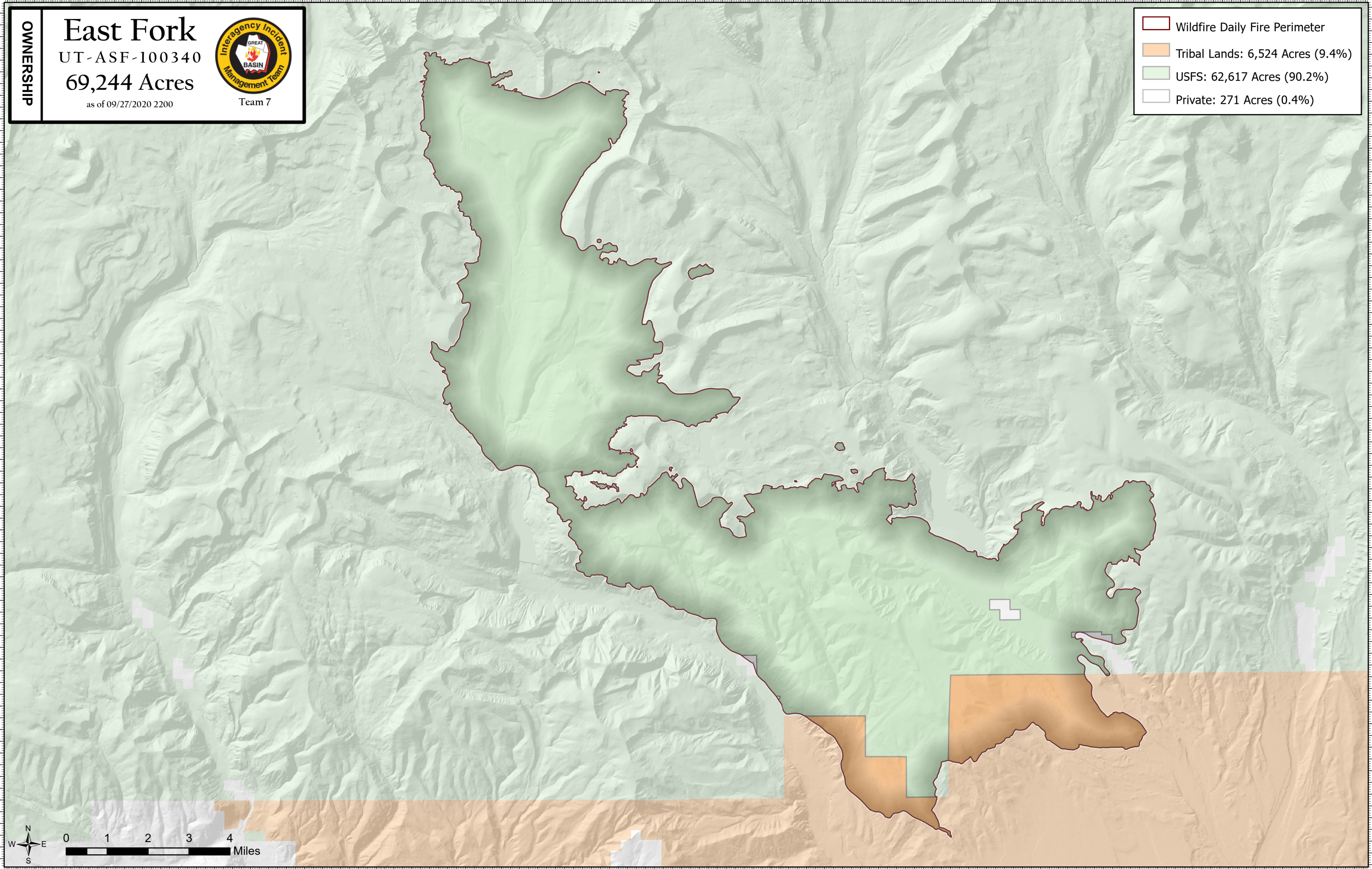
110°56'W 110°52'W 110°48'W 110°44'W 110°40'W 110°36'W 110°32'W 110°28'W 110°24'W 110°20'W

OWNERSHIP

East Fork
UT-ASF-100340
69,244 Acres
as of 09/27/2020 2200



	Wildfire Daily Fire Perimeter
	Tribal Lands: 6,524 Acres (9.4%)
	USFS: 62,617 Acres (90.2%)
	Private: 271 Acres (0.4%)



110°56'W 110°52'W 110°48'W 110°44'W 110°40'W 110°36'W 110°32'W 110°28'W 110°24'W 110°20'W

40°44'N
40°40'N
40°36'N
40°32'N
40°28'N

40°44'N
40°40'N
40°36'N
40°32'N
40°28'N