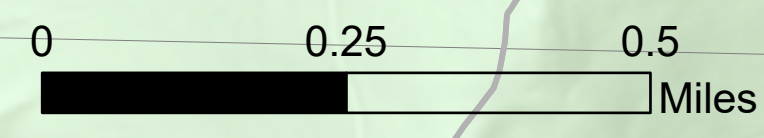


BRIEFING

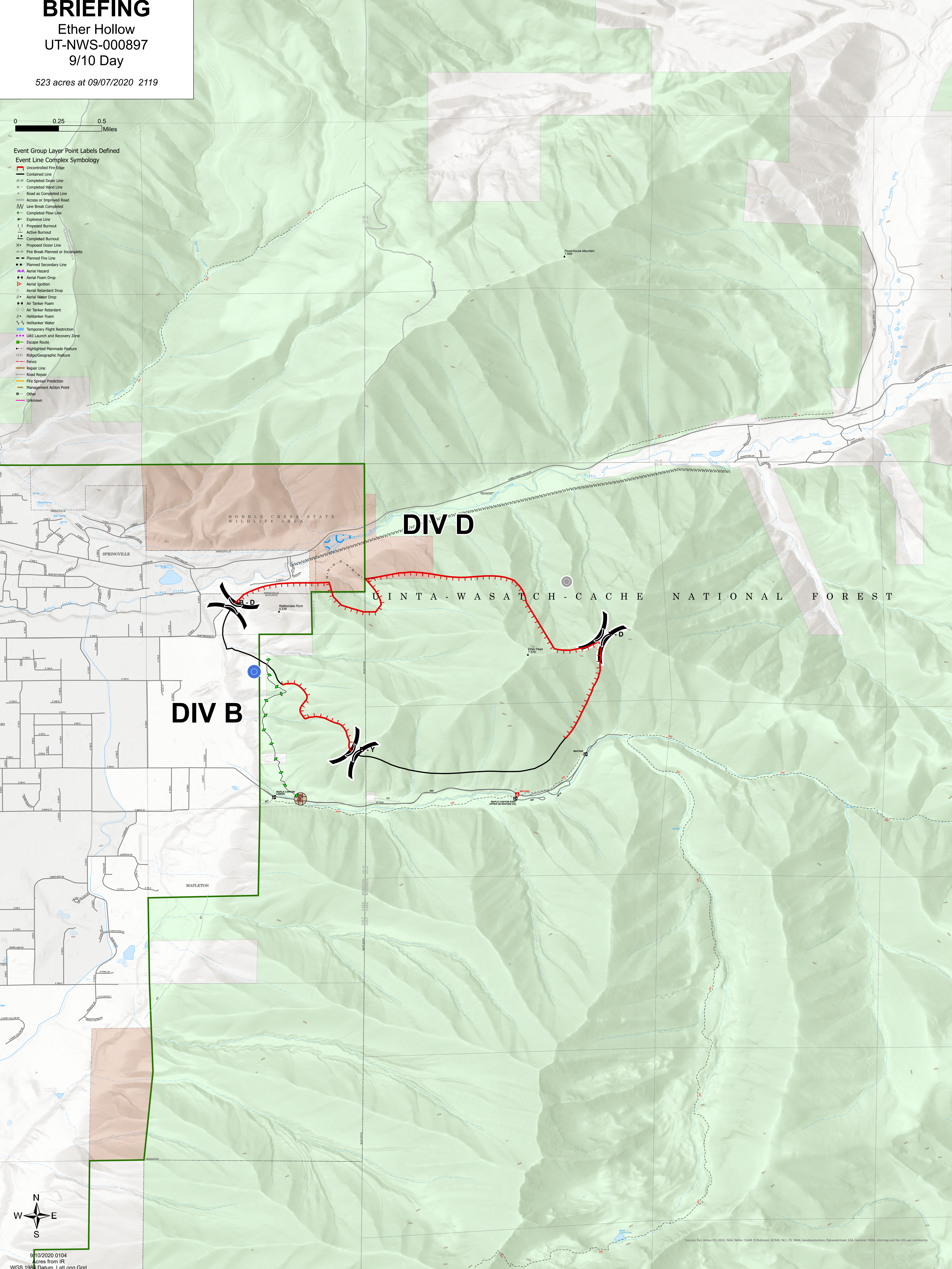
Ether Hollow
UT-NWS-000897
9/10 Day

523 acres at 09/07/2020 2119



Event Group Layer Point Labels Defined Event Line Complex Symbology

- Uncontrolled Fire Edge
- Contained Line
- Completed Dozer Line
- Completed Hand Line
- Road as Completed Line
- Access or Improved Road
- Line Break Completed
- Completed Flow Line
- Explosive Line
- Proposed Burnout
- Active Burnout
- Completed Burnout
- Proposed Dozer Line
- Fire Break Planned or Incomplete
- Planned Fire Line
- Planned Secondary Line
- Aerial Hazard
- Aerial Foam Drop
- Aerial Ignition
- Aerial Retardant Drop
- Aerial Water Drop
- Air Tanker Retardant
- Heli-tanker Retardant
- Heli-tanker Water
- Temporary Flight Restriction
- UAS Launch and Recovery Zone
- Escape Route
- Highlighted Manmade Feature
- Ridge/Geographic Feature
- Fence
- Repair Line
- Road Repair
- Fire Spread Prediction
- Management Action Point
- Other
- Unknown



9/10/2020 0104
Acres from IR
WGS 1983 Datum, LatLong Grid

Sources: Esri, Airbus DS, USGS, NGA, NASA, CGAR, N Robinson, NCIAS, NLS, OS, NMA, Geodatasystemen, Rijkswaterstaats, GSA, Geoland, FEMA, Intermap and the GIS user community