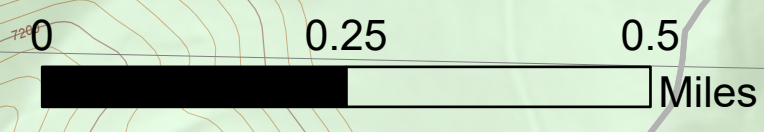


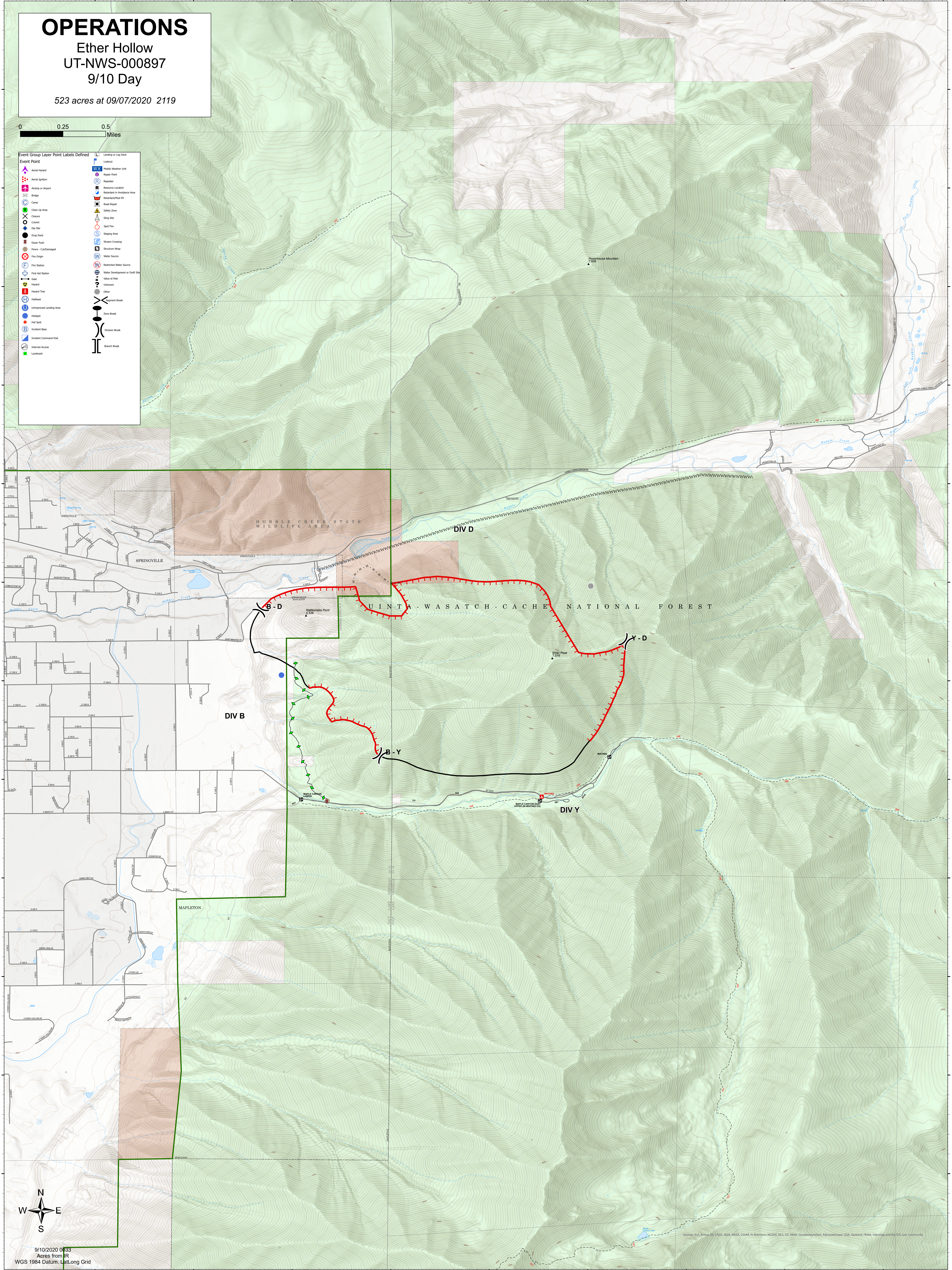
OPERATIONS

Ether Hollow
UT-NWS-000897
9/10 Day

523 acres at 09/07/2020 2119



Event Group Layer Point Labels Defined	
Aerial Hazard	Landing or Log Deck
Aerial Ignition	Mobile Weather Unit
Arrival or Depart	Tractor Base
Bridge	Request
Camp	Resource Location
Clean Up Area	Retardant in Avoidance Area
Closure	Retardant/Hot Pk
Culvert	Road Closure
Dip Site	Safety Zone
Drop Point	Slip Site
Dropper Push	Spot Fire
Fire Origin	Staging Area
Fire Station	Stream Crossing
Fire Aid Station	Structure Wap
Gate	Water Source
Hazard	Restricted Water Source
Hazard Tree	Water Development or Draft Site
Helibase	Value at Risk
Unimproved Landing Area	Unknown
Helipod	Other
Hot Spot	Concentric Break
Incident Base	Zone Break
Incident Command Post	Division Break
Isolated Access	Branch Break
Landmark	



9/10/2020 0633
Acres from IR
WGS 1984 Datum, Lat/Long Grid

Sources: Esri, Airphoto, USGS, NGA, NADA, CGAIR, N Robinson, NCLAS, NLS, OLS, NMA, Geodetic Position, EpiCenterBase, GSA, Geotitles, FEMA, Intermap and the GIS user community