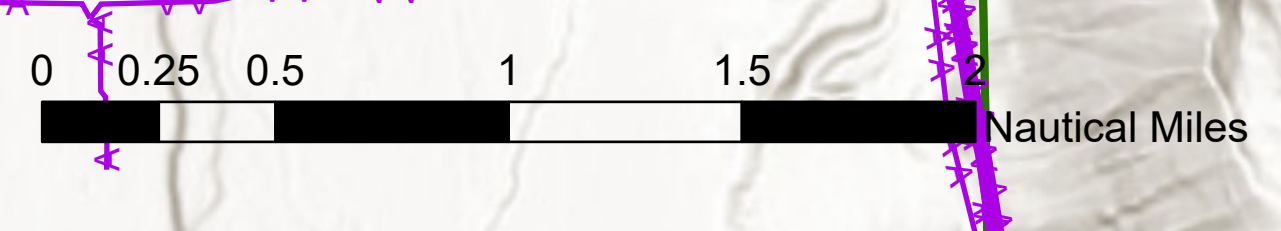


# AIR OPERATIONS

Ether Hollow  
UT-NWS-000897  
9/11 Day

869 acres at 09/08/2020 1800

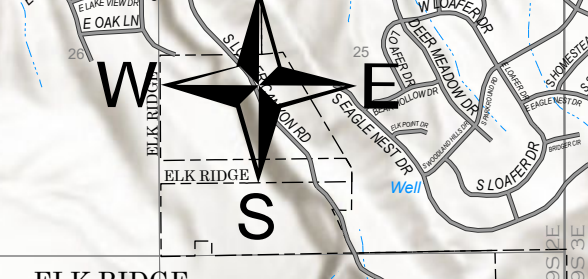


<b>Event Group Layer Point Labels Defined</b>	Active Burnout	Unknown	Helibase	Staging Area
<b>Event Polygon</b>	Completed Burnout	Aerial Hazard	Unimproved Landing Area	Stream Crossing
Wildfire Daily Fire Perimeter	Proposed Burnout	Aerial Ignition	Helispot	Structure Wrap
Prescribed Fire	Active Burnout	Aerial Ignition	Hot Spot	Water Source
Unburned Island	Completed Burnout	Aerial Ignition	Incident Base	Restricted Water Source
Proposed Burnout	Value at Risk	Aerial Water Drop	Incident Command Post	Water Development or Draft Site
Active Burnout	Closure Area	Aerial Tanker Foam	Internet Access	Value at Risk
Completed Burnout	Evacuation Area	Helitanker Retardant	Landmark	Unknown
Value at Risk	Retardant Avoidance Area	Helitanker Retardant	Landing or Log Deck	Other
Other	Other	Helitanker Retardant	Lookout	Segment Break
<b>Event Line Complex Symbology</b>	Uncollected Fire Edge	Helitanker Retardant	Mobile Weather Unit	Zone Break
Uncollected Fire Edge	Completed Dozer Line	Helitanker Retardant	Repair Point	Division Break
Completed Dozer Line	Completed Hand Line	Helitanker Retardant	Repeater	Branch Break
Completed Hand Line	Road as Completed Line	Helitanker Retardant	Resource Location	
Road as Completed Line	Line Break Completed	Helitanker Retardant	Retardant/Mud Pit	
Line Break Completed	Completed Flow Line	Helitanker Retardant	Road Repair	
Completed Flow Line	Explosive Line	Helitanker Retardant	Retardant/Mud Pit	
Explosive Line	Proposed Burnout	Helitanker Retardant	Road Repair	
Proposed Burnout		Helitanker Retardant	Safety Zone	
		Helitanker Retardant	Sling Site	
		Helitanker Retardant	Spot Fire	
		Helitanker Retardant		

UINTA - WASATCH - CACHE NATIONAL FOREST

**DIV D**  
**DIV B**

FeatureCategory Label LatWGS84\_DDM



9/10/2020 23:15  
Acres from IR  
North American 1983 Datum, LatLong

111°40.5'W 111°40'W 111°39.5'W 111°39'W 111°38.5'W 111°38'W 111°37.5'W 111°37'W 111°36.5'W 111°36'W 111°35.5'W 111°35'W 111°34.5'W 111°34'W 111°33.5'W 111°33'W 111°32.5'W 111°32'W 111°31.5'W 111°31'W 111°30.5'W 111°30'W 111°29.5'W 111°29'W 111°28.5'W 111°28'W 111°27.5'W 111°27'W 111°26.5'W 111°26'W 111°25.5'W 111°25'W 111°24.5'W 111°24'W 111°23.5'W 111°23'W 111°22.5'W