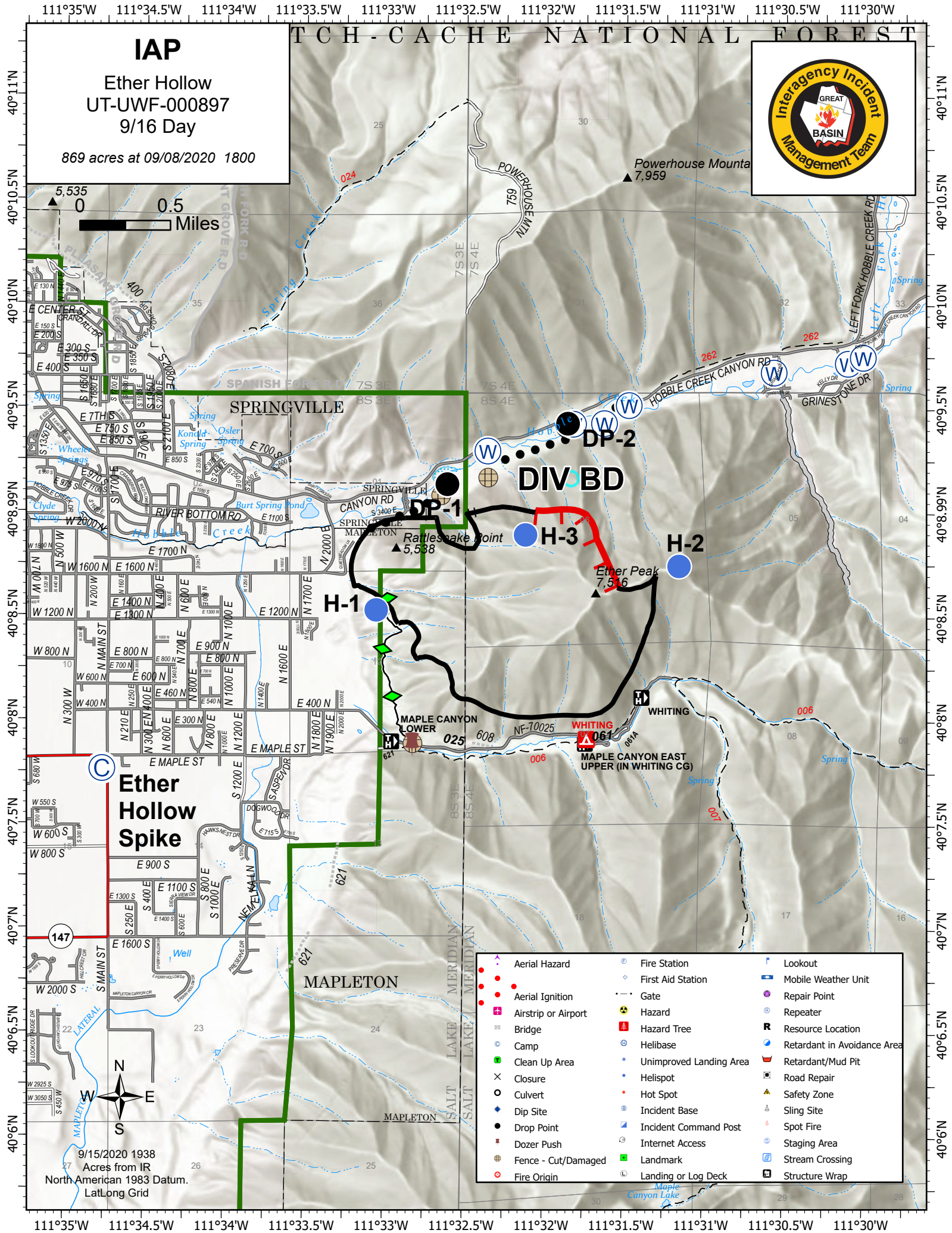
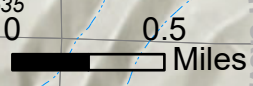
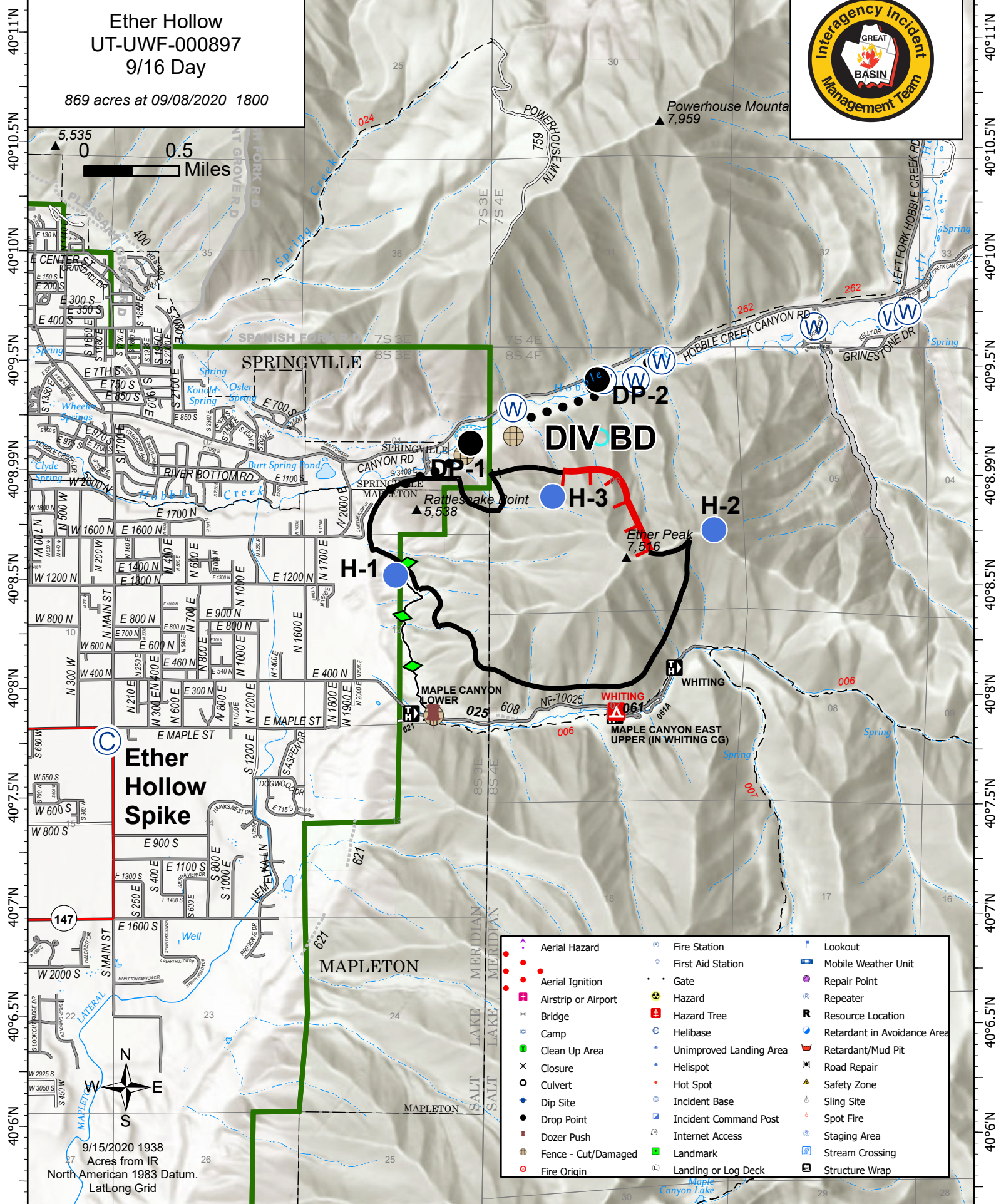


111°35'W 111°34.5'W 111°34'W 111°33.5'W 111°33'W 111°32.5'W 111°32'W 111°31.5'W 111°31'W 111°30.5'W 111°30'W

# IAP

Ether Hollow  
UT-UWF-000897  
9/16 Day

869 acres at 09/08/2020 1800



**Ether Hollow Spike**

	Aerial Hazard		Fire Station		Lookout
	Aerial Ignition		First Aid Station		Mobile Weather Unit
	Airstrip or Airport		Gate		Repair Point
	Bridge		Hazard		Repeater
	Camp		Hazard Tree		Resource Location
	Clean Up Area		Helibase		Retardant in Avoidance Area
	Closure		Unimproved Landing Area		Retardant/Mud Pit
	Culvert		Helispot		Road Repair
	Dip Site		Hot Spot		Safety Zone
	Drop Point		Incident Base		Sling Site
	Dozer Push		Incident Command Post		Spot Fire
	Fence - Cut/Damaged		Internet Access		Staging Area
	Fire Origin		Landmark		Stream Crossing
			Landing or Log Deck		Structure Wrap

111°35'W 111°34.5'W 111°34'W 111°33.5'W 111°33'W 111°32.5'W 111°32'W 111°31.5'W 111°31'W 111°30.5'W 111°30'W