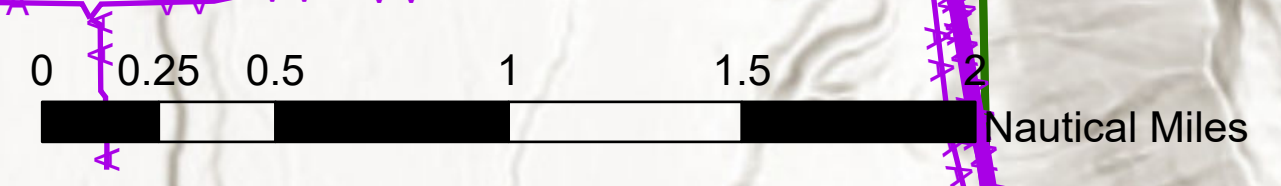


# AIR OPERATIONS

Ether Hollow  
UT-UWF-000897  
9/19 Day

869 acres at 09/08/2020 1800



**Event Group Layer Point Labels Defined**

- Active Burnout
- Completed Burnout
- Proposed Dozer Line
- Prescribed Fire
- Unburned Island
- Proposed Burnout
- Active Burnout
- Completed Burnout
- Value at Risk
- Closure Area
- Evacuation Area
- Retardant Avoidance Area
- Unknown
- Other

**Event Polygon**

- Uncollected Fire Edge
- Contained Line
- Completed Dozer Line
- Completed Hand Line
- Road as Completed Line
- Access or Improved Road
- Line Break Completed
- Completed Flow Line
- Explosive Line
- Proposed Burnout

**Event Point**

- Aerial Hazard
- Aerial Ignition
- Airstrip or Airport
- Bridge
- Camp
- Clean Up Area
- Closure
- Culvert
- Dip Site
- Drop Point
- Dozer Push
- Fence - Cut/Damaged
- Fire Origin
- Fire Station
- First Aid Station
- Gate
- Hazard
- Hazard Tree

**Event Line**

- Helibase
- Unimproved Landing Area
- Helispot
- Hot Spot
- Incident Base
- Incident Command Post
- Internet Access
- Landmark
- Landing or Log Deck
- Lookout
- Mobile Weather Unit
- Repair Point
- Repeater
- Resource Location
- Retardant in Avoidance Area
- Retardant/Mud Pit
- Road Repair
- Safety Zone
- Sling Site
- Spot Fire

**Event Line Complex Symbology**

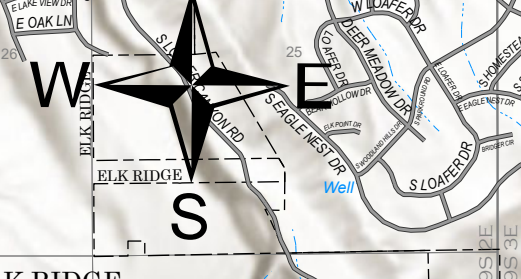
- Unknown
- Staging Area
- Stream Crossing
- Structure Wrap
- Water Source
- Restricted Water Source
- Water Development or Draft Site
- Value at Risk
- Unknown
- Other
- Segment Break
- Zone Break
- Division Break
- Branch Break
- Aerial Hazard

UINTA - WASATCH - CACHE NATIONAL FOREST

**DIV BD**

Ether Hollow Spike

FeatureCategory	Label	LatWGS84_DTM	LongWGS84_DTM
Camp	Ether Hollow Spike	40.1293269	-111.57942789
Division Break	B - D	40.1476259490001	-111.5226252586
Division Break	Y - D	40.149897996	-111.5217927879
Dozer Push		40.131392308	-111.54707505
Drop Point	DP-2	40.1571391890001	-111.526999774
Drop Point	DP-1	40.152407620001	-111.542549898
Fence - Cut/Damaged		40.1314966560001	-111.547029158
Fence - Cut/Damaged			
Fence - Cut/Damaged			
Helispot	H-1	40.142146428	-111.55090309
Helispot	H-2	40.145796667	-111.53333333
Helispot	H-3	40.146216667	-111.53333333
Water Source		40.157102200001	-111.529436559
Water Source		40.149119620001	-111.529346054
Water Source		40.137182887	-111.52779842
Water Source		40.1366165420001	-111.524638115



9/18/2020 1845  
Acres from IR  
North American 1983 Datum, Lat/Long

