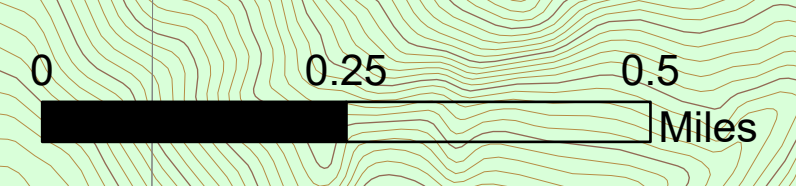


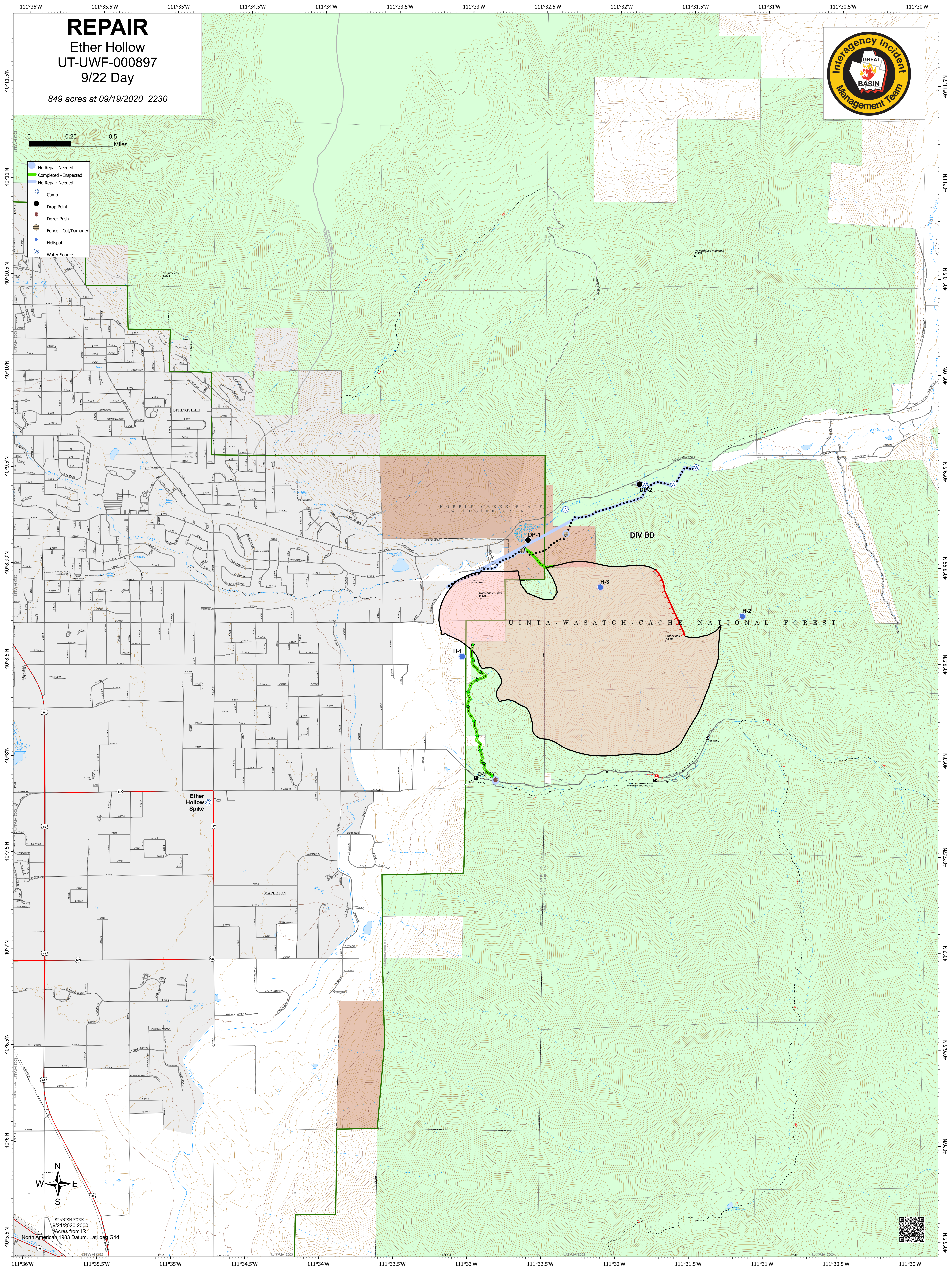
REPAIR

Ether Hollow
UT-UWF-000897
9/22 Day

849 acres at 09/19/2020 2230



- No Repair Needed
- Completed - Inspected
- No Repair Needed
- Camp
- Drop Point
- Dozer Push
- Fence - Cut/Damaged
- Helispot
- Water Source



Ether Hollow
Spike

MAPLETON

HOBBIE CREEK STATE WILDLIFE AREA

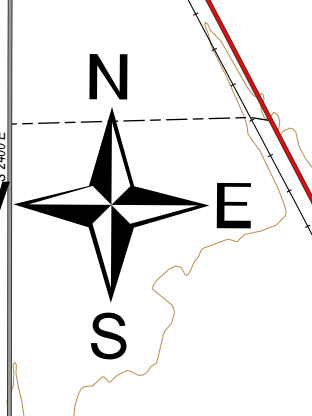
UINTA - WASATCH - CACHE NATIONAL FOREST

DIV BD

H-1

H-3

H-2



SPANISH FORK
9/21/2020 2000
Acres from IR
North American 1983 Datum, Lat/Long Grid

