

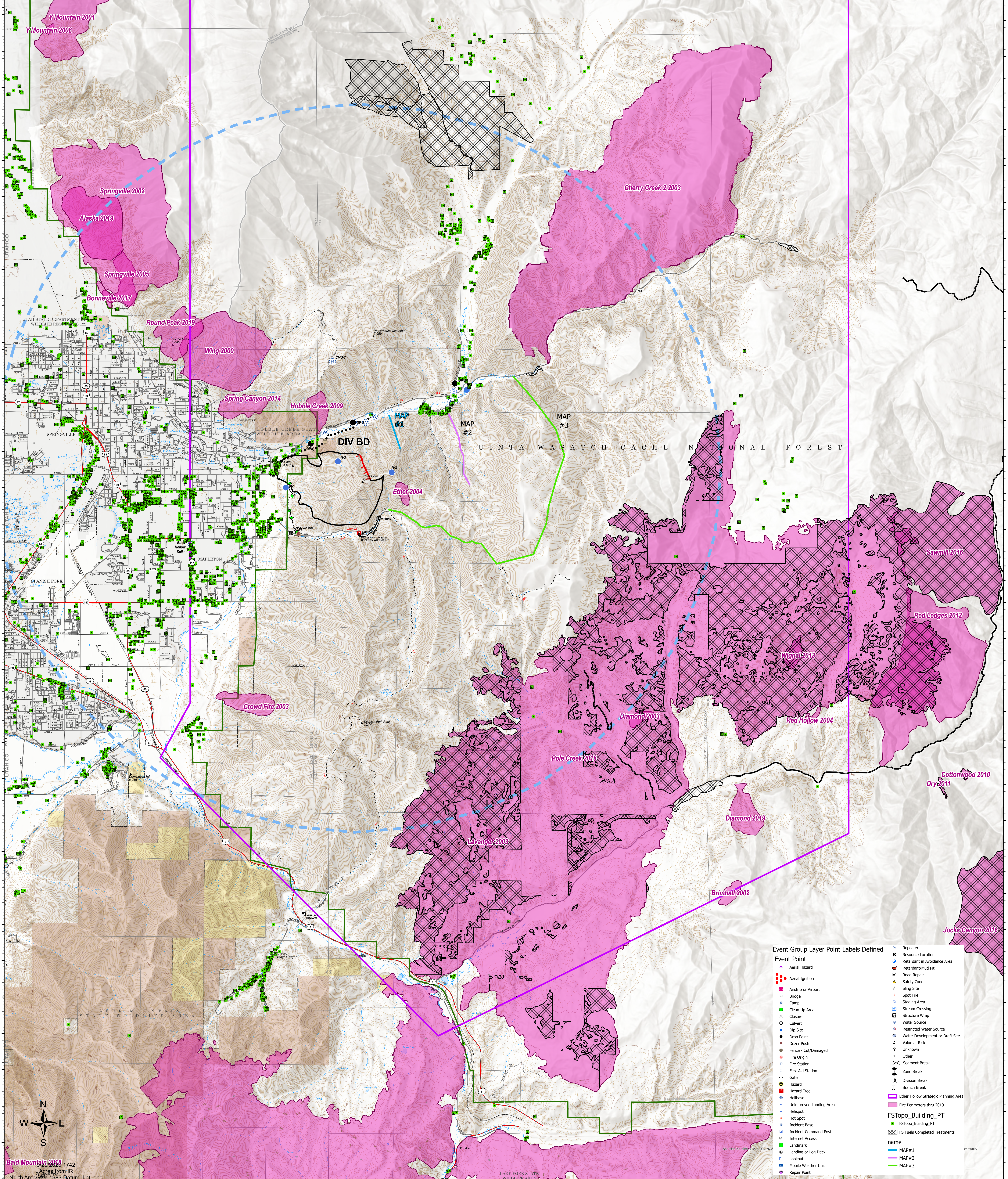
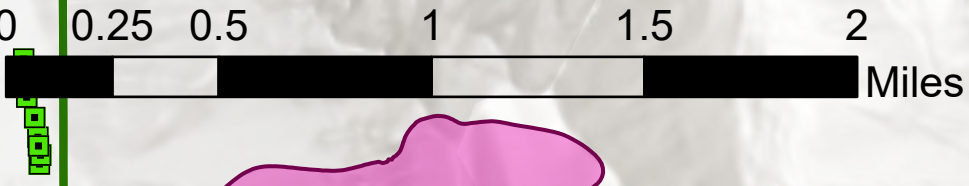
# Strategic Planning

## Ether Hollow

### UT-UWF-000897

#### 9/21 Day

869 acres at 09/08/2020 1800



**Event Group Layer Point Labels Defined**

| Event Point                          | Label                                |
|--------------------------------------|--------------------------------------|
| Aerial Hazard                        | Aerial Hazard                        |
| Aerial Ignition                      | Aerial Ignition                      |
| Airstrip or Airport                  | Airstrip or Airport                  |
| Bridge                               | Bridge                               |
| Camp                                 | Camp                                 |
| Clear Top Area                       | Clear Top Area                       |
| Closure                              | Closure                              |
| Culvert                              | Culvert                              |
| Dip Site                             | Dip Site                             |
| Drop Point                           | Drop Point                           |
| Dozer Push                           | Dozer Push                           |
| Fence - Cut/Damaged                  | Fence - Cut/Damaged                  |
| Fire Origin                          | Fire Origin                          |
| Fire Station                         | Fire Station                         |
| First Aid Station                    | First Aid Station                    |
| Gate                                 | Gate                                 |
| Hazard                               | Hazard                               |
| Hazard Tree                          | Hazard Tree                          |
| Heli-base                            | Heli-base                            |
| Unimproved Landing Area              | Unimproved Landing Area              |
| Helispot                             | Helispot                             |
| Hot Spot                             | Hot Spot                             |
| Incident Base                        | Incident Base                        |
| Incident Command Post                | Incident Command Post                |
| Internet Access                      | Internet Access                      |
| Landmark                             | Landmark                             |
| Landing or Log Deck                  | Landing or Log Deck                  |
| Lookout                              | Lookout                              |
| Mobile Weather Unit                  | Mobile Weather Unit                  |
| Repair Point                         | Repair Point                         |
| Repeater                             | Repeater                             |
| Resource Location                    | Resource Location                    |
| Retardant/Mud Pit                    | Retardant/Mud Pit                    |
| Road Repair                          | Road Repair                          |
| Safety Zone                          | Safety Zone                          |
| Sling Site                           | Sling Site                           |
| Spot Fire                            | Spot Fire                            |
| Staging Area                         | Staging Area                         |
| Stream Crossing                      | Stream Crossing                      |
| Structure Wrap                       | Structure Wrap                       |
| Water Source                         | Water Source                         |
| Restricted Water Source              | Restricted Water Source              |
| Water Development or Draft Site      | Water Development or Draft Site      |
| Value at Risk                        | Value at Risk                        |
| Unknown                              | Unknown                              |
| Other                                | Other                                |
| Segment Break                        | Segment Break                        |
| Zone Break                           | Zone Break                           |
| Division Break                       | Division Break                       |
| Branch Break                         | Branch Break                         |
| Ether Hollow Strategic Planning Area | Ether Hollow Strategic Planning Area |
| Fire Perimeters thru 2019            | Fire Perimeters thru 2019            |
| FSTopo_Building_PT                   | FSTopo_Building_PT                   |
| FSTopo_Building_PT                   | FSTopo_Building_PT                   |
| FS Fuels Completed Treatments        | FS Fuels Completed Treatments        |
| name                                 | name                                 |
| MAP#1                                | MAP#1                                |
| MAP#2                                | MAP#2                                |
| MAP#3                                | MAP#3                                |
| community                            | community                            |



North American 1983 Datum: Lat/Long