

Briefing Map

Fire Canyon

UTNES-201079

10/21/2020 06:00Day

1,670 acres at 10/20/2020 at 20:00

- Drop Point
- Helispot
- Hot Spot
-) Division Break
- ▬ Uncontrolled Fire Edge
- ▬ Contained Line
- ▬ Completed Dozer Line
- ▬ Road as Completed Line
- ▬ Access or Improved Road
- ▬ Completed Burnout
- ▬ Planned Secondary Line
- ▬ Wildfire Daily Fire Perimeter
- ▬ Proposed Burnout
- ▬ Completed Burnout
- Bureau of Land Management
- Bureau of Reclamation
- Private
- State Wildlife Reserve/Management Area

Div W

DP 2

Downhill Only

BLM

Div E

Private

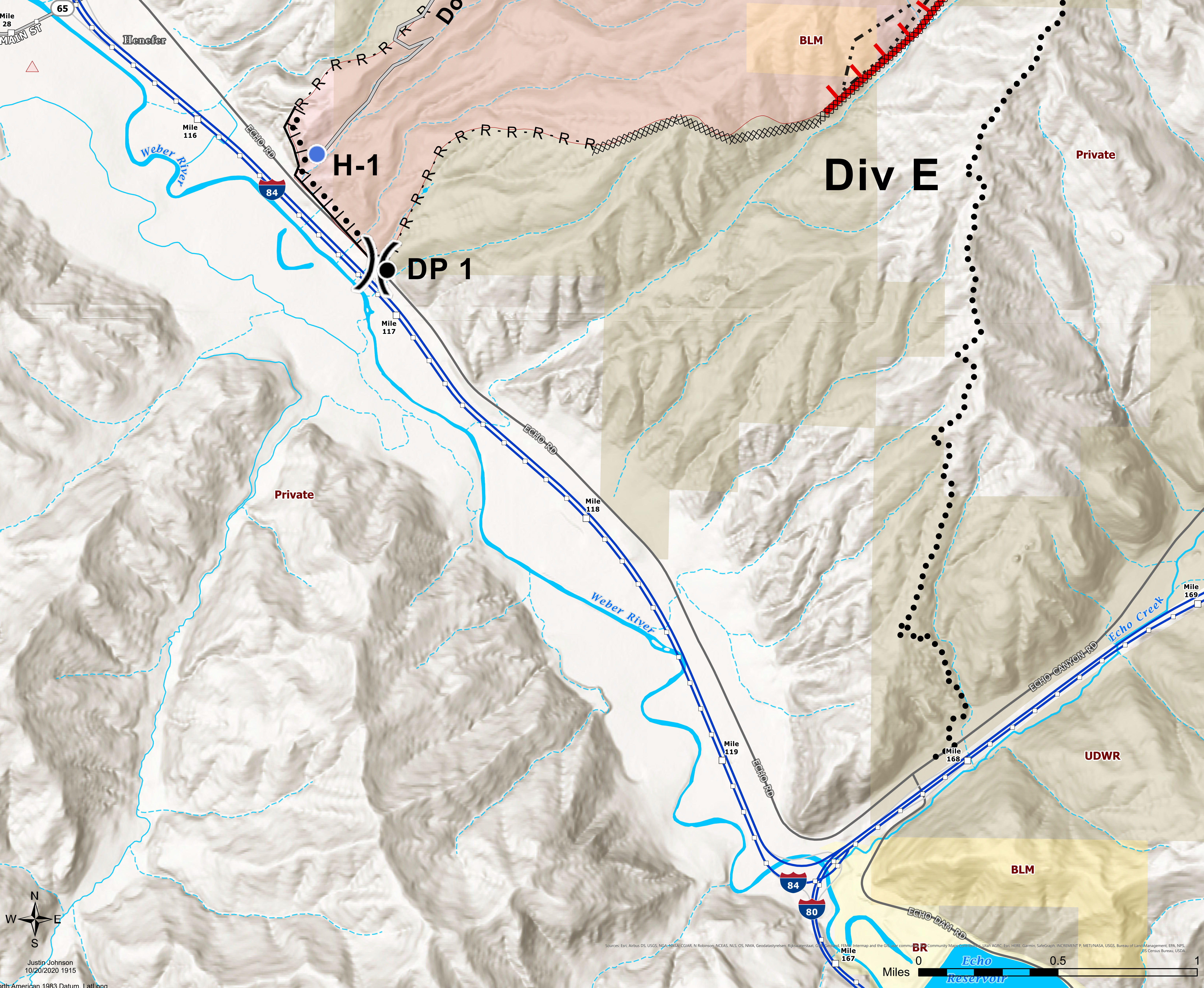
Private

UDWR

BLM

BR

Echo Reservoir



Justin Johnson
10/20/2020 1915

North American 1983 Datum, Lat/Long

Sources: Esri, Airbus DS, USGS, NGA, NASA, CGAR, N Robinson, ACRAS, NLS, OS, NMA, Geodatasystem, PIA, Waterfall, GCS, Microsoft, FEMA, Firemap and the OpenStreetMap community, UTM, AGRC, Esri, HERE, Garmin, Swg, SateGraph, INCREMENT P, METI/NASA, USGS, Bureau of Land Management, EPA, NPS, US Census Bureau, USDA.