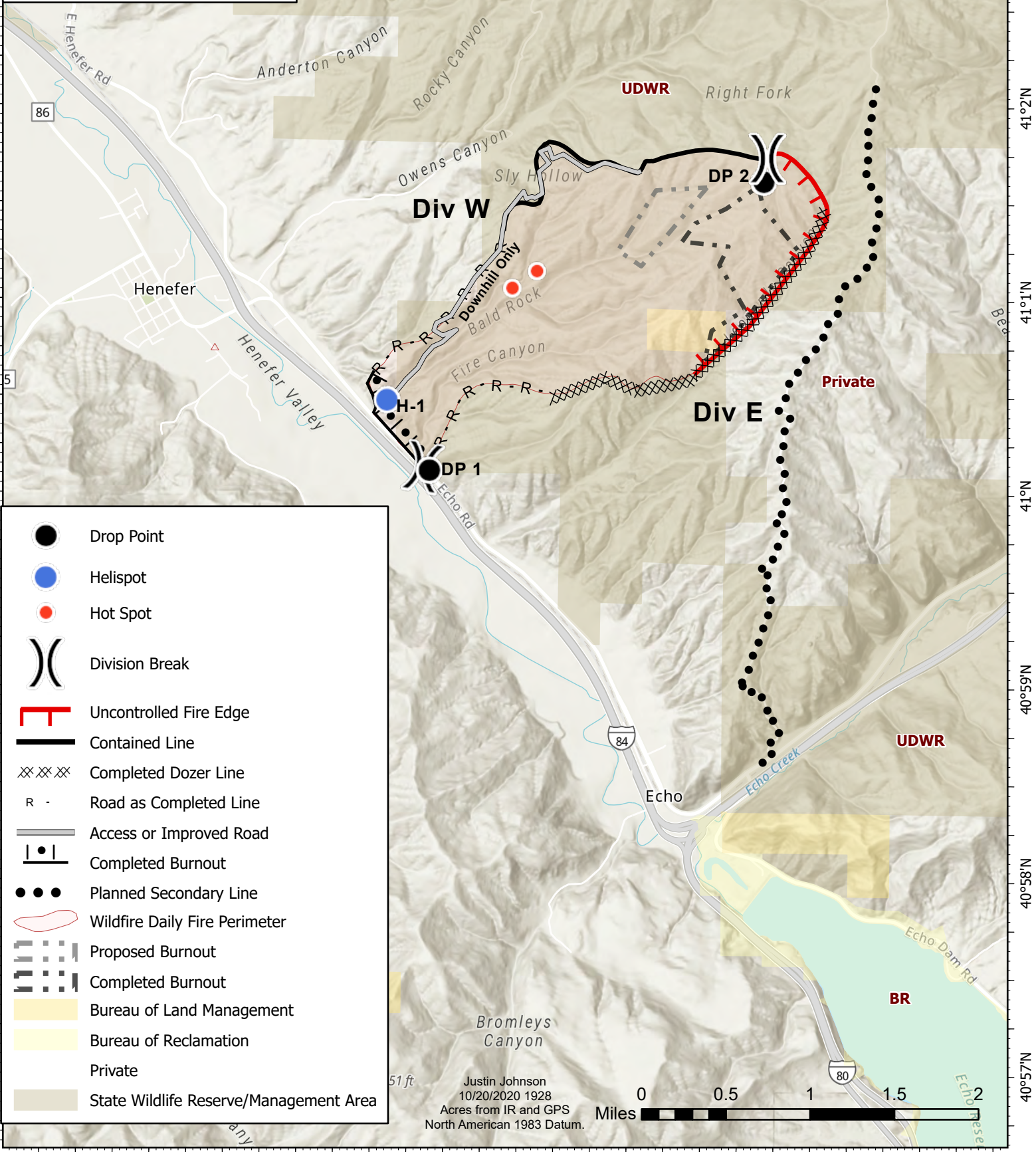


111°31'W 111°30'W 111°29'W 111°28'W 111°27'W 111°26'W 111°25'W

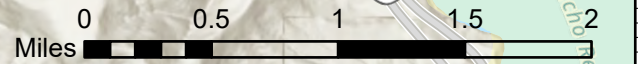
41°3'N 41°2'N 41°1'N 41°N 40°59'N 40°58'N 40°57'N

IAP Map
Fire Canyon
 UTNES-201079
 10/21/2020 06:00Day
 1,670 acres at 10/20/2020 at 20:00



- Drop Point
- Helispot
- Hot Spot
- Division Break
- Uncontrolled Fire Edge
- Contained Line
- Completed Dozer Line
- Road as Completed Line
- Access or Improved Road
- Completed Burnout
- Planned Secondary Line
- Wildfire Daily Fire Perimeter
- Proposed Burnout
- Completed Burnout
- Bureau of Land Management
- Bureau of Reclamation
- Private
- State Wildlife Reserve/Management Area

Justin Johnson
 10/20/2020 1928
 Acres from IR and GPS
 North American 1983 Datum.



111°30'W 111°29'W 111°28'W 111°27'W 111°26'W 111°25'W