

111°30'W 111°29'W 111°28'W 111°27'W 111°26'W 111°25'W

41°1'N 41°2'N 41°1'N 41°0'N 40°59'N 40°58'N

41°1'N 41°2'N 41°1'N 41°0'N 40°59'N 40°58'N

Public Information Map

Fire Canyon

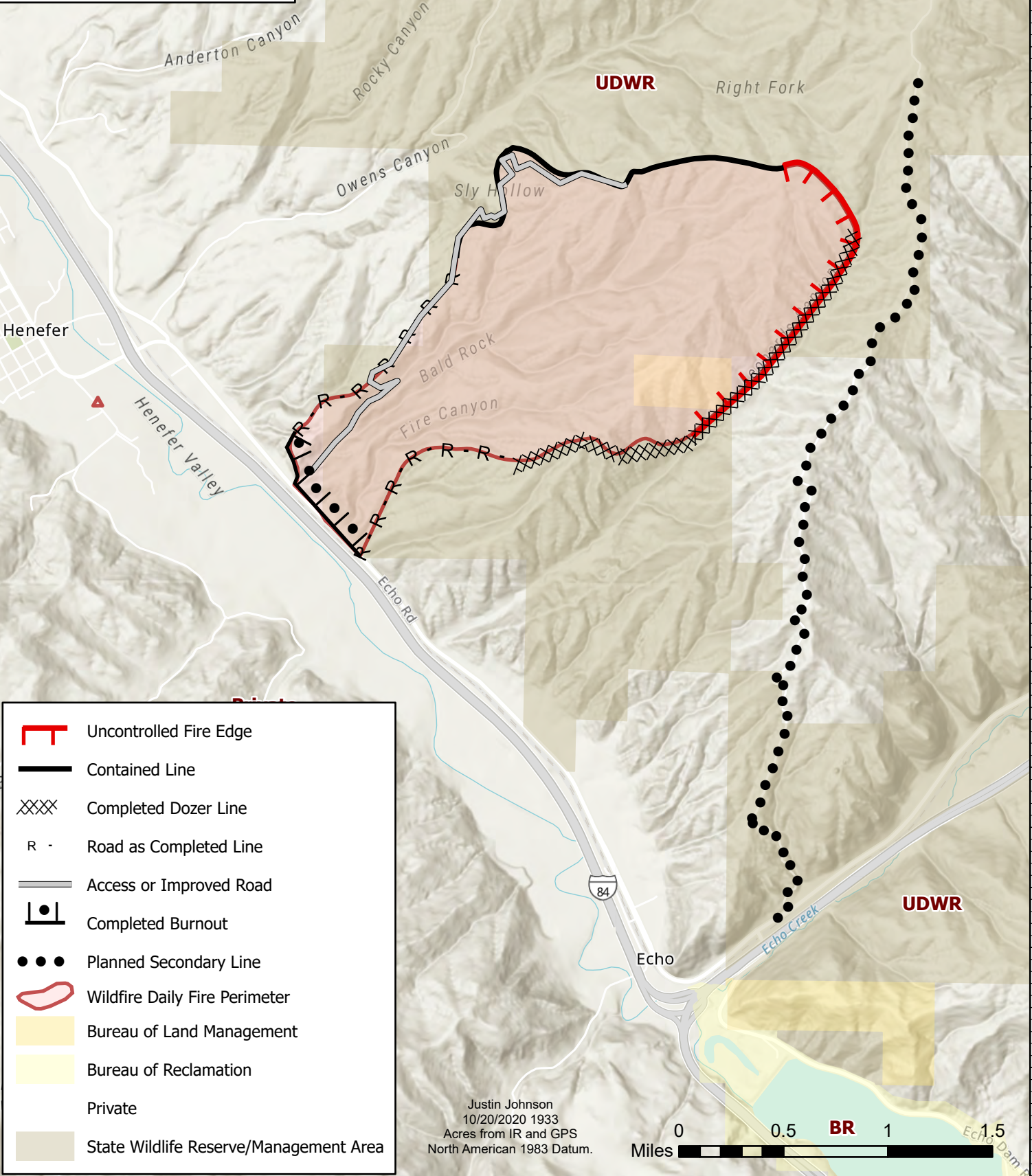
UTNES-201079

10/21/2020 06:00Day

1,670 acres at 10/20/2020 at 20:00



7418 ft



	Uncontrolled Fire Edge
	Contained Line
	Completed Dozer Line
	Road as Completed Line
	Access or Improved Road
	Completed Burnout
	Planned Secondary Line
	Wildfire Daily Fire Perimeter
	Bureau of Land Management
	Bureau of Reclamation
	Private
	State Wildlife Reserve/Management Area

Justin Johnson
10/20/2020 1933
Acres from IR and GPS
North American 1983 Datum.

