




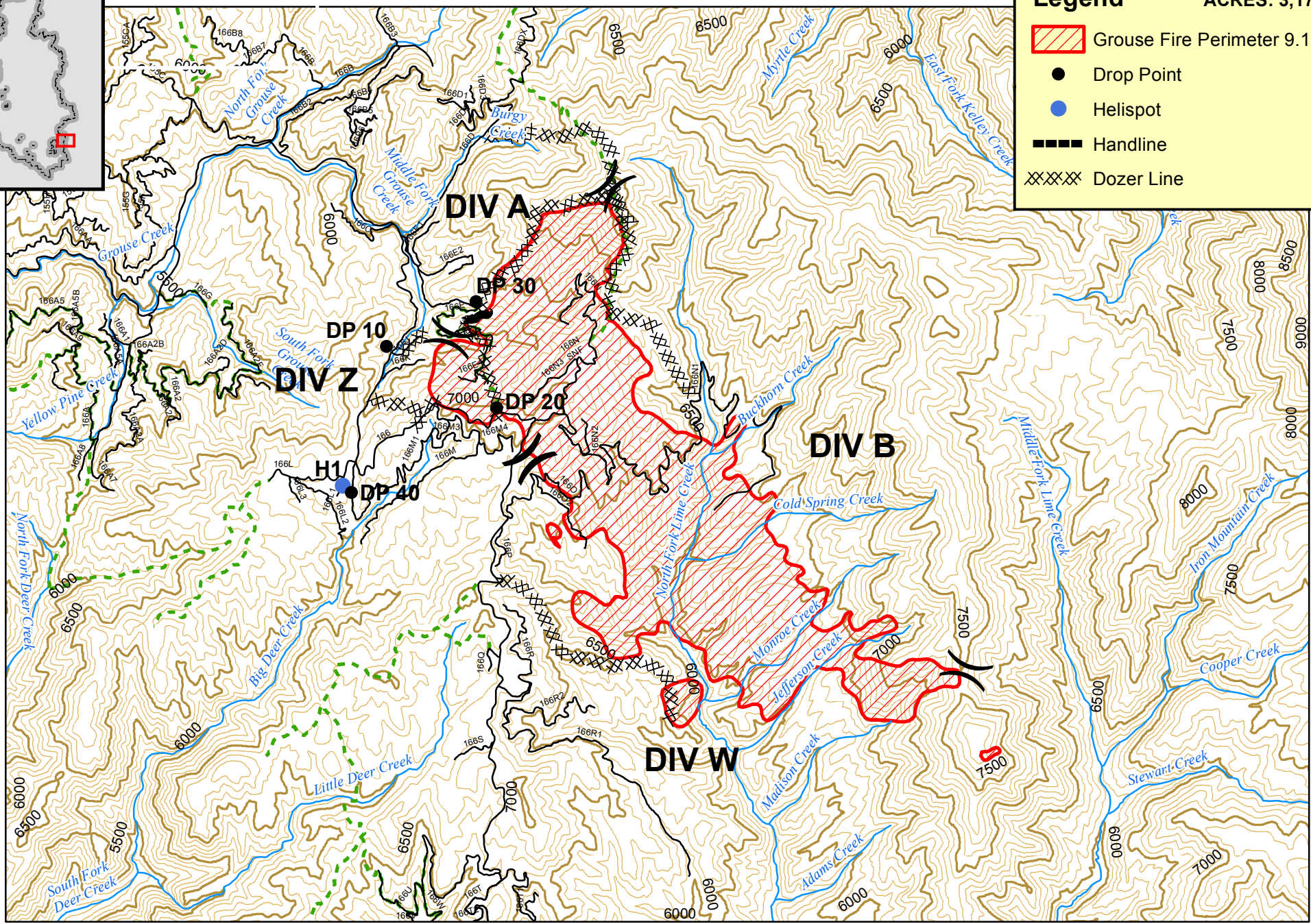
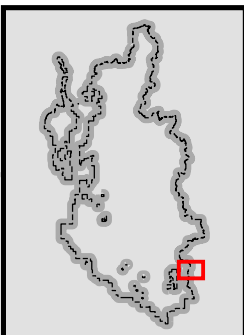


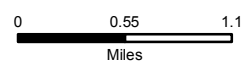
# Grouse Fire Perimeter 9/11/20

**Legend** **ACRES: 3,177**

-  Grouse Fire Perimeter 9.10.20
-  Drop Point
-  Helispot
-  Handline
-  Dozer Line



Helispot - 43 31.360' x 115 11.682'  
 DP 10 - 43 31.943' x 115 10.763'  
 DP 20 - 43 31.863' x 115 10.237'  
 DP 30 - 43 32.553' x 115 10.410'  
 DP 40 - 43 31.360' x 115 11.682'



The U.S. Department of Agriculture, Forest Service uses the most current and complete data available. GIS data and product accuracy may vary. They may be developed from sources of differing accuracy, accurate only at certain scales, based on modeling or interpretation, incomplete while being revised or created, etc. Using GIS products for purposes other than those for which they were created, may yield inaccurate or misleading results. The Forest Service reserves the right to correct, modify, or replace GIS products without notification.

Prepared by: Information Resources Management  
 Supervisor's Office  
 Boise National Forest  
 Boise, Idaho

Produced: 9/11/2020 By: zvanabamba  
 File: T:\FS\NFS\Boise\Program\5100Fire\GIS\Workspace\Van Abbema\Pile burn\Grouse Fire\Grouse with vicinity.9.9.20.mxd